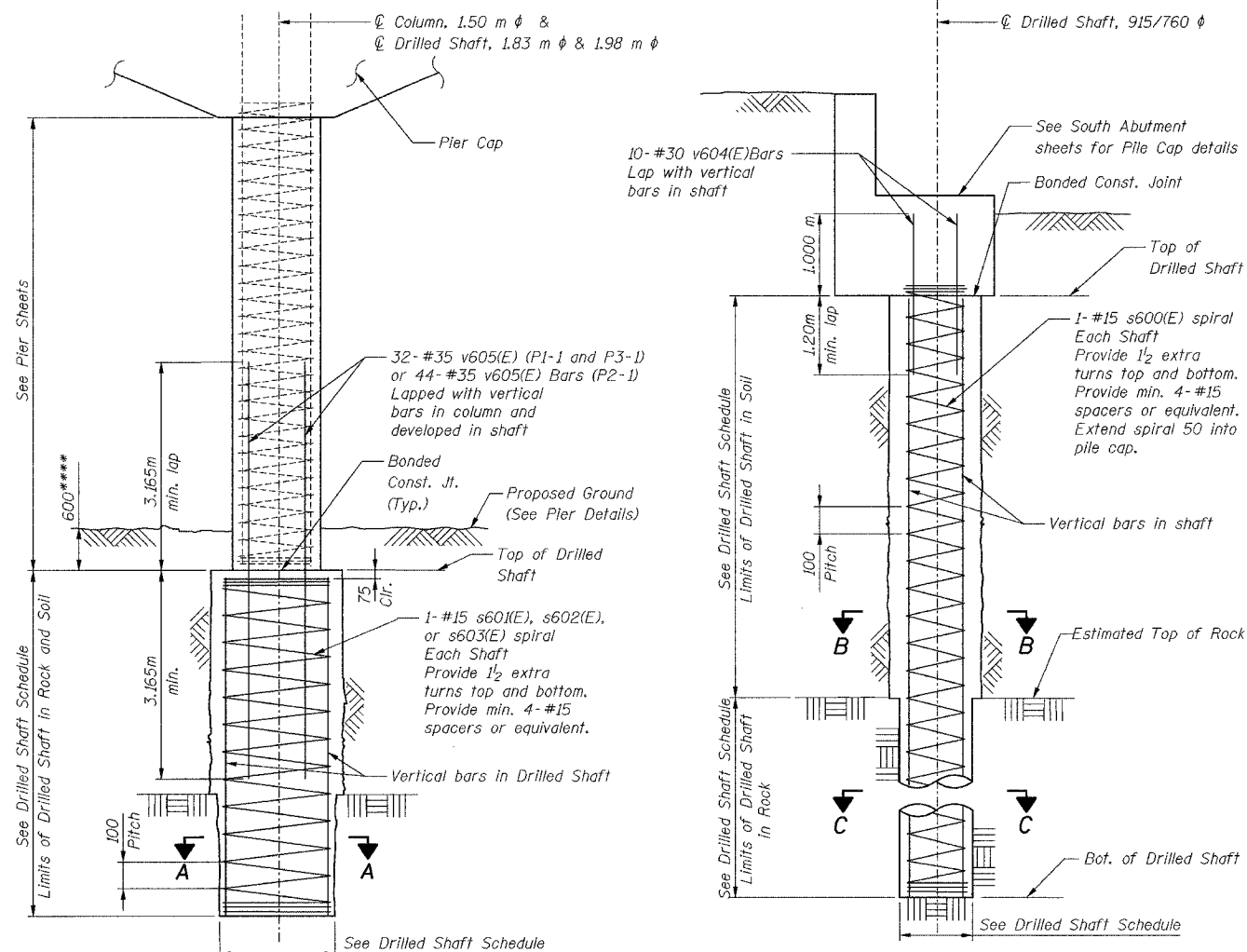


68201	ROUTE NO.	SECTION	COUNTY	TOTAL SHEETS	SHEET NO.
	FAI 74	*	TAZEWELL	1366	550
STA.			TO STA.		
F.H.W.A. REGION			ILLINOIS PROJECT		



ELEVATION
(Piers #1 thru #3)

**** Shown for concrete placement above the water table. Should be increased if tremie methods are required.

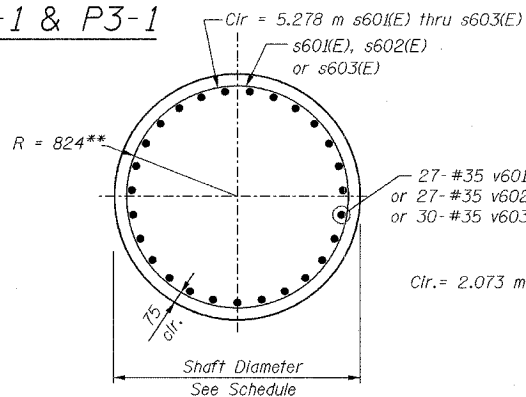
DRILLED SHAFTS
P1-1, P2-1 & P3-1

ELEVATION
(South Abutment)
DRILLED SHAFTS
SA-1 thru SA-3

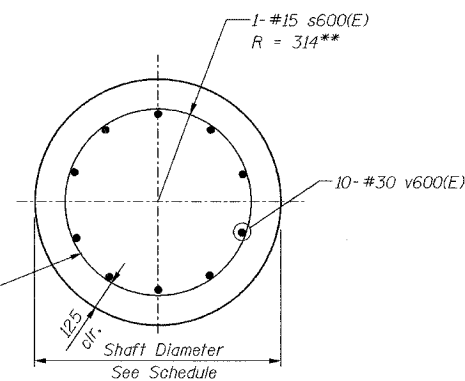
Bar Designation Table

Shaft	Vertical Bars	Spiral
SA-1	v600(E)	v604(E) s600(E)
SA-2	v600(E)	v604(E) s600(E)
SA-3	v600(E)	v604(E) s600(E)
P1-1	v601(E)	v605(E) s601(E)
P2-1	v602(E)	v605(E) s602(E)
P3-1	v603(E)	v605(E) s603(E)

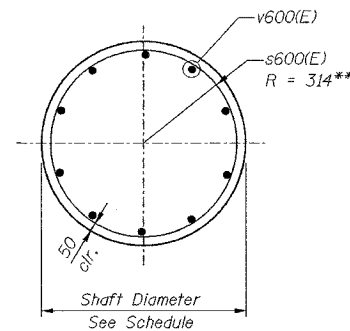
DESIGNED	AAY
CHECKED	ISD
DRAWN	VH
CHECKED	LRB



SECTION A-A
(In Rock) Piers 1-3



SECTION B-B
(In Soil) S. Abut.



SECTION C-C
(In Rock) S. Abut.

DRILLED SHAFT SCHEDULE

LOCATION	MARK	Drilled Shaft (m) (Dia. in Soil)	Drilled Shaft (m) (Dia. in Rock)	Estimated Top of Rock (m)	Shaft Length (m) (In Soil)	Shaft Length (m) (In Rock)	Top of Shaft Elevation (m)	Bottom of Shaft Elevation (m)
S. Abut.	SA-1	0.915	0.760	145.900	8.387	6.700	154.287	139.200
	SA-2	0.915	0.760	145.900	8.387	6.700	154.287	139.200
	SA-3	0.915	0.760	145.900	8.387	6.700	154.287	139.200
Pier 1	P1-1	1.830	1.830	145.200	1.000	7.200	146.200	138.000
Pier 2	P2-1	---	1.830	145.500	---	6.600	142.600	136.000
Pier 3	P3-1	1.980	1.830	139.100	4.400	2.300	143.500	136.800

NOTES:

- Construction to be performed in conformance with the Special Provision "Drilled Shafts". Contractor and field personnel qualification shall be approved by Engineer.
- Contractor to submit to Engineer for review and approval an installation plan for the construction of drilled shafts.
- The boring logs indicate a possibility that voids may be encountered during drilling. The Contractor shall be required to provide, as part of their installation procedure submittal, details and methods for placing concrete through the voids without the creation of a structural defect. If a void is encountered, its elevation and length shall be forwarded to the Bureau of Bridges and Structures for evaluation and to determine if any modifications will be required to the shaft or installation details. Any work and materials required to mitigate any encountered voids shall be paid according to Article 109.04.
- All steel centering devices shall be epoxy coated.
- For layout of drilled shafts see Sheet 4.

BILL OF MATERIAL

Bar	No.	Size	Length (m)	Shape
s600(E)	3	# 15	15.15	W
s601(E)	1	# 15	8.20	W
s602(E)	1	# 15	6.60	W
s603(E)	1	# 15	6.70	W
v600(E)	30	# 30	15.05	—
v601(E)	27	# 35	8.15	—
v602(E)	27	# 35	6.55	—
v603(E)	20	# 35	6.65	—
v604(E)	30	# 30	2.20	—
v605(E)	108	# 35	6.33	—
			Unit	Total
Drilled Shaft in Soil 1980mm Dia.			m	4.5
Drilled Shaft in Soil 1830mm Dia.			m	1.0
Drilled Shaft in Rock 1830mm Dia.			m	16.5
Drilled Shaft in Soil 915mm Dia.			m	25.5
Drilled Shaft in Rock 760mm Dia.			m	20.5
Reinforcement Bars, Epoxy Coated			kg	16,210

Reinforcement Bars designated (E) shall be Epoxy coated.
Minimum lap for spirals = 1/2 turns.
**Denotes inside radius.
***Length is height of spiral.
Cir. = circumference (using outside diameter).

ILLINOIS DEPARTMENT OF TRANSPORTATION
RAMP K-2 OVER
MAIN ST & RAMP J-3
F.A.I. ROUTE 74 (I-74)
SECTION 90-IIB-5

DRILLED SHAFT DETAILS

SN: 090-0156
TAZEWELL CO., IL.

STA. 10+529.222
DATE: 12-23-04

ab **alfred benesch & company**
CONSULTING ENGINEERS
205 NORTH MICHIGAN AVENUE, CHICAGO, ILLINOIS 60601
JOB NO. 3573

2/3/2005 m:\p\proj3573\rampk2\st11fp2-7a03001b6.dgn