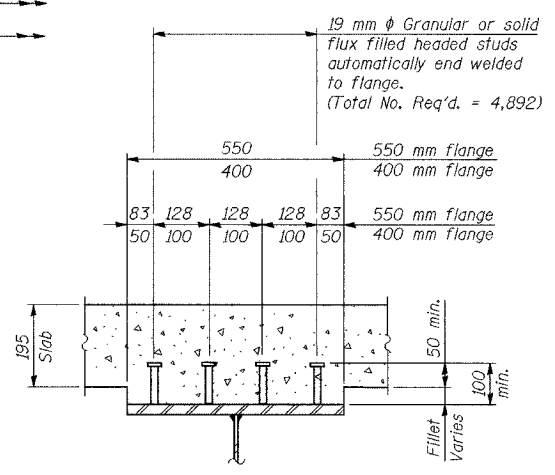
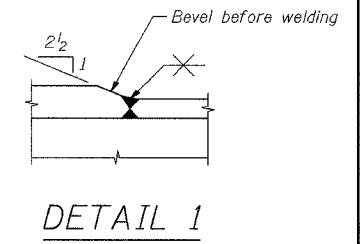
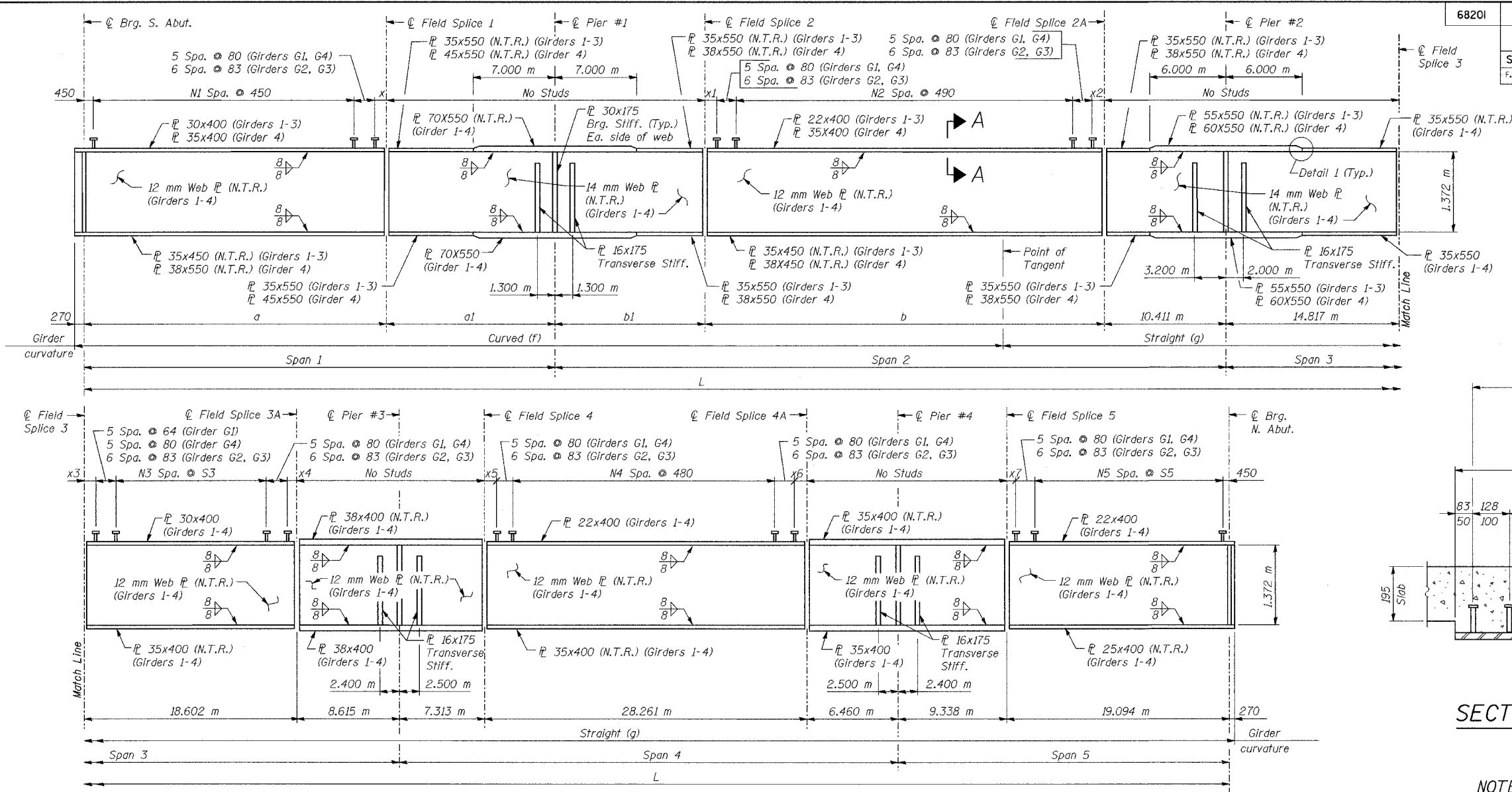


ROUTE No.	SECTION	COUNTY	TOTAL SHEETS	SHEET NO.
FAI74	*	TAZEWELL	1366	566
STA.		TO STA.		
F.H.W.A. REGION		ILLINOIS PROJECT		



GIRDER ELEVATION

Girder No.	Girder Dimensions (m)															Shear Connector Layout												
	Radius	Span 1	Span 2	Span 3	Span 4	Span 5	L	a	a1	b	b1	f	g	x	x1	x2	x3	x4	x5	x6	x7	N1	N2	N3	N4	N5	S3	S5
1	574.300	39.958	57.074	42.034	42.034	28.432	209.532	25.531	14.427	33.811	12.852	80.182	129.889	0.831	1.314	1.317	0.531	1.071	0.851	1.650	0.614	53	62	40	52	43	407	410
2	576.666	40.123	57.238	42.034	42.034	28.432	209.862	25.637	14.486	33.922	12.905	80.512	129.889	0.837	1.502	1.040	0.572	1.190	0.631	1.190	0.513	53	62	46	53	46	344	383
3	579.033	40.289	57.403	42.034	42.034	28.432	210.192	25.743	14.546	34.034	12.958	80.842	129.889	0.493	1.323	0.841	0.591	1.171	0.530	1.291	0.513	54	63	46	53	46	344	383
4	581.400	40.454	57.567	42.034	42.034	28.432	210.522	25.848	14.605	34.146	13.011	81.172	129.889	0.698	0.846	0.650	1.502	1.780	0.491	1.530	0.613	54	65	40	53	43	363	410

DESIGNED	JQZ
CHECKED	KWS
DRAWN	VH
CHECKED	LRB

- NOTES:
- N.T.R. denotes plates which Notch Toughness Requirements are applicable.
 - All structural steel shown on this sheet shall be AASHSTO M270M Grade 345.
 - For Fascia Girders G1 & G4, provide Transverse Stiffeners on inside face.
 - Work this sheet with sheets: 19 & 21 thru 29.

ILLINOIS DEPARTMENT OF TRANSPORTATION
 RAMP K-2 OVER
 MAIN ST & RAMP J-3
 F.A.I. ROUTE 74 (I-74)
 SECTION 90-IHB-5
 GIRDER ELEVATION

ab alfred benesch & company
 CONSULTING ENGINEERS
 205 NORTH MICHIGAN AVENUE, CHICAGO, ILLINOIS 60601
 JOB NO. 3573

SN: 090-0156
 TAZEWELL CO., IL.
 STA. 10+529.222
 DATE: 12-23-04

2/3/2005 m:\proj\3573\c-ampk2\stlgr1-7a090056.dgn