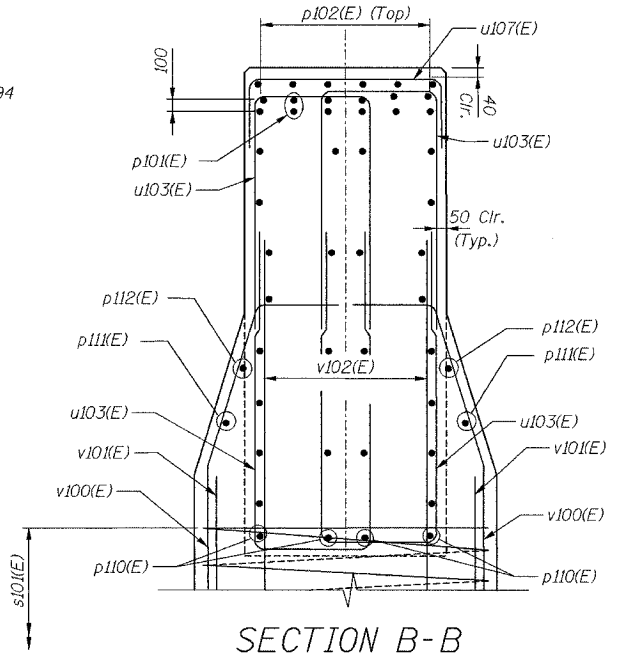
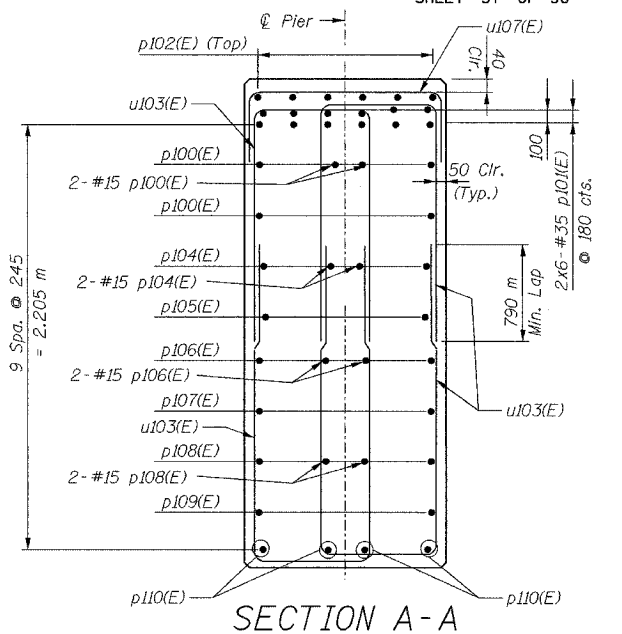
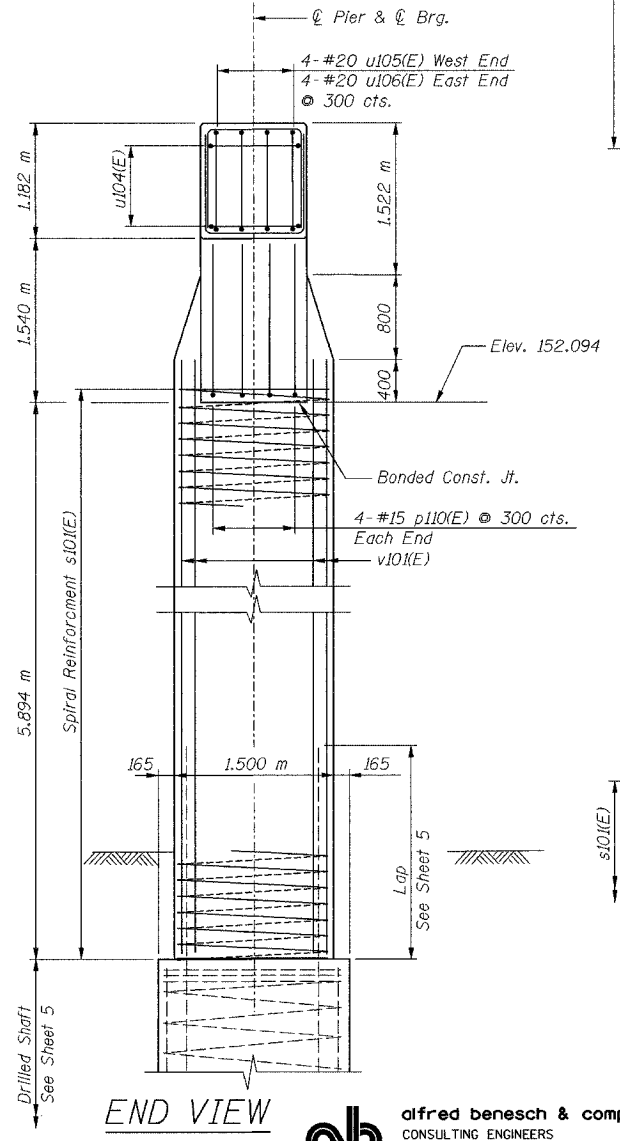
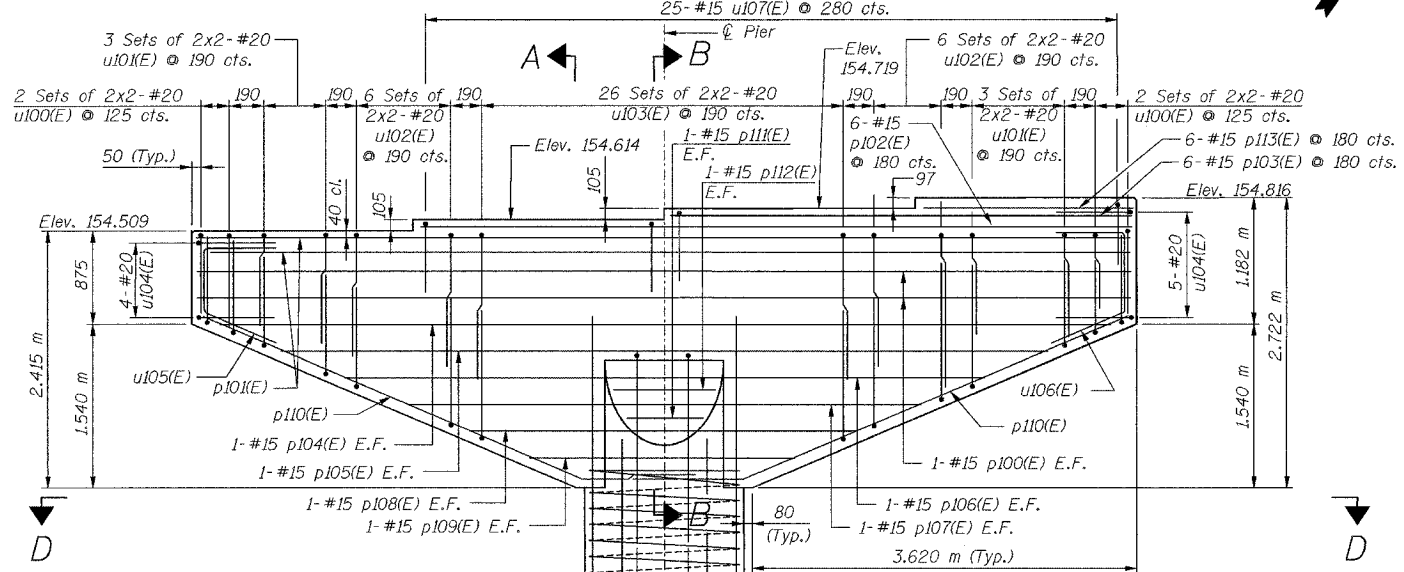
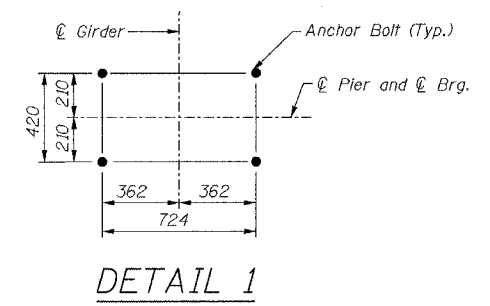
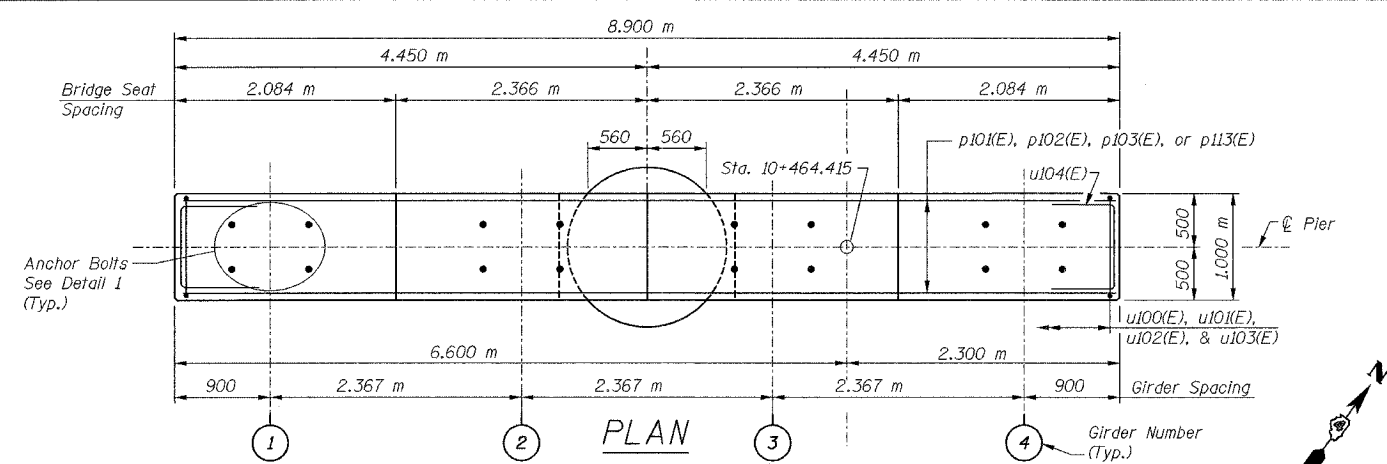


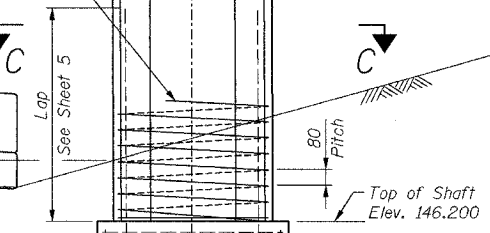
68201	ROUTE No.	SECTION	COUNTY	TOTAL SHEETS	SHEET NO.
	FAI 74	*	TAZEWELL	1366	582
STA.		TO STA.			
F.H.W.A. REGION		ILLINOIS		PROJECT	



1-#15 s10(E) spiral. Provide 1/2 extra turns top and bottom. Provide min. 4-#15 spacers or equivalent. Extend spiral 50 into pier cap.

Ramp J3
PG Elev. 147.085
Sta. 10+241.640

Low Grade Elev. 147.00



NOTES:

1. Work this sheet with Sheet 38.
2. For Anchor Bolt details, see Sheet 30.
3. For Drilled Shaft details, see Sheet 5.
4. Use the following minimum lap lengths unless otherwise noted:
 #15 - 640
 #20 - 790
 #25 - 1.32 m
 #30 - 1.85 m
 #35 - 2.64 m
5. E.F. denotes Each Face.

DESIGNED	JWCIII
CHECKED	SWS
DRAWN	VH
CHECKED	LRB

ELEVATION
Looking Upstation

END VIEW

ab **alfred benesch & company**
CONSULTING ENGINEERS
205 NORTH MICHIGAN AVENUE, CHICAGO, ILLINOIS 60601
J08 NO. 3573

ILLINOIS DEPARTMENT OF TRANSPORTATION
RAMP K-2 OVER
MAIN ST & RAMP J-3
F.A.I. ROUTE 74 (I-74)
SECTION 90-IIHB-5

**PIER 1
PLAN & ELEVATION**

SN: 090-0156
TAZEWELL CO., IL.

STA. 10+529.222
DATE: 12-23-04

2/3/2005

m:\p\013573\1\compk2\ref\p1r1-7a09010156.dgn