

LEGEND - CLAUDE H. HURLEY COMPANY TEST BORING LOGS

A-1 to A-8 (and subgroups) Engineering classifications of soil in accordance with AASHTO M 145 standard specification.

Silty Clay Loam Textural classification of soil in accordance with IDOT Triangular Chart.

Laminated Coal Shale Textural and engineering classification of bedrock in accordance with conventional practice.

N.Bp0.15m N-value or standard penetration test value. Number of blows required to drive a standard split-spoon sampler 0.15 m as conducted in accordance with AASHTO T 206 standard specification.

Q_u , kPa Unconfined compression strength of soil in kilopascals determined in accordance with AASHTO T 208 standard specification.

w, % Natural moisture content of soil and bedrock in percent determined in accordance with AASHTO T 265 standard specification and AASHTO T 265/ASTM D 2216 for bedrock.

γ_d , kg/m³ Dry unit weight of soil and bedrock in kilograms per cubic meter determined in accordance with standard practice.

GROUNDWATER DATA

DD Water Level During Drilling
 BAR Water Level Before Auger Removal
 AAR Water Level After Auger Removal
 DC Dry Cave Level
 WC Wet Cave Level
 d Days
 h Hours

DRILLING METHOD

FA Flight Auger
 RW Rotary Wash
 HSA Hollow Stem Auger

SAMPLE TYPE

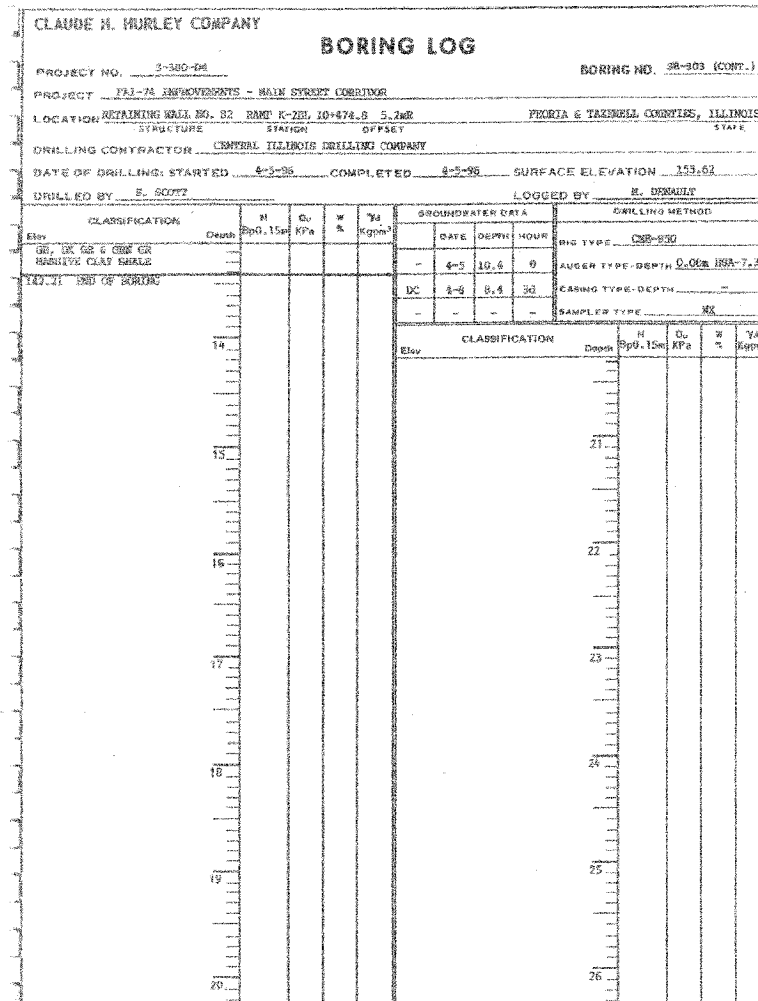
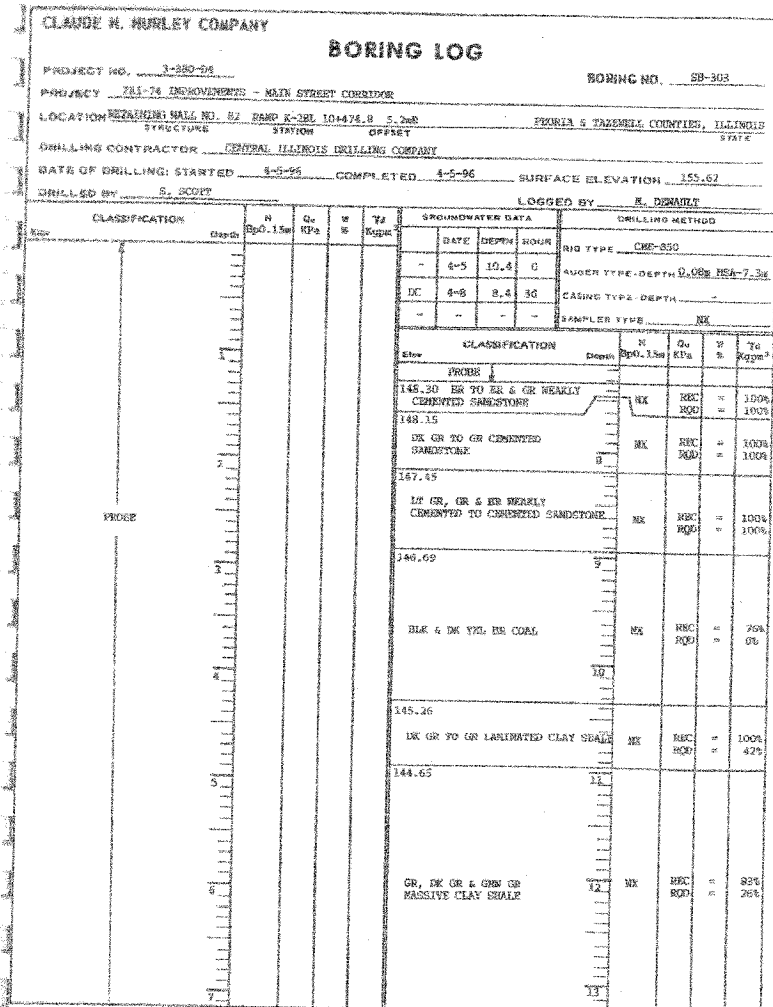
AU Auger
 SS Standard Split-barrel
 ST Thin-walled Tube
 DB Core Barrel

NOTES:

1. The abbreviations, symbols and definitions in this Legend are commonly used and understood in the engineering and construction practices and are presented only for information and communication.

2. The Geotechnical Data presented in this Legend and on the Boring Logs are to be interpreted by personnel educated, trained, experienced and licensed to practice Geotechnical Engineering, and in direct communication with the Claude H. Hurley Company.

68201	ROUTE No.	SECTION	COUNTY	TOTAL SHEETS	SHEET NO.
	FAI 74	*	TAZEWELL	1366	595
STA.		TO STA.			
F.H.W.A. REGION		ILLINOIS		PROJECT	



2/3/2005

mt:\p\o\13573\vr-omp\k2\sr\11ab5-7a0900156.dgn

DESIGNED	WJZ
CHECKED	SWS
DRAWN	RMG
CHECKED	DJM

alfred benesch & company
 CONSULTING ENGINEERS
 205 NORTH MICHIGAN AVENUE, CHICAGO, ILLINOIS 60601
 JOB NO. 3573

ILLINOIS DEPARTMENT OF TRANSPORTATION
 RAMP K-2 OVER
 MAIN ST & RAMP J-3
 F.A.I. ROUTE 74 (I-74)
 SECTION 90-IIB-5
 SOIL BORING LOG
 SB-303

SN: 090-0156
 TAZEWELL CO., IL.

STA. 10+529.222
 DATE: 12-23-04