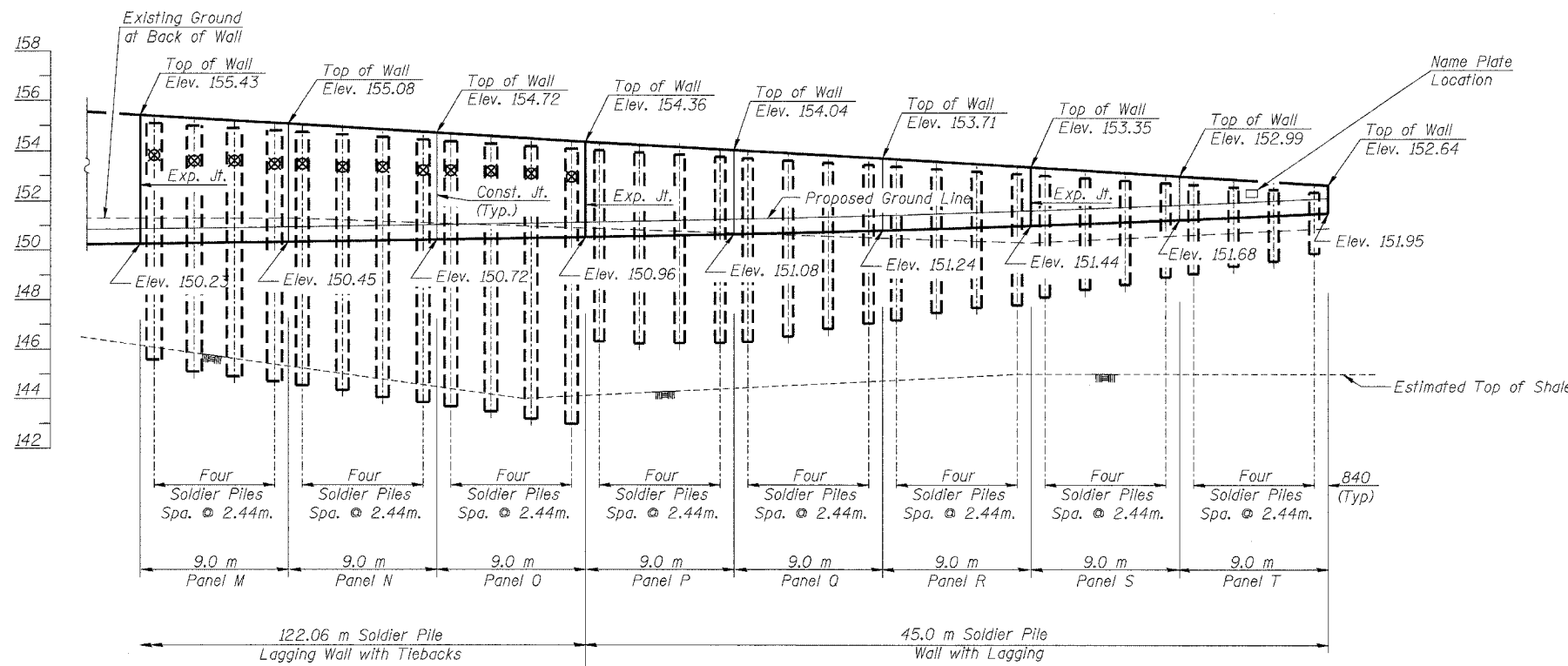


ROUTE NO.	SECTION	COUNTY	SHEET	PAGE	SHEET NO.
FAI 74	*	TAZEWELL	1366	603	21 SHEETS
FED. ROAD DIST. NO. 7		ILLINOIS		FED. AID PROJECT-	
*90-11HB-5					

GENERAL NOTES

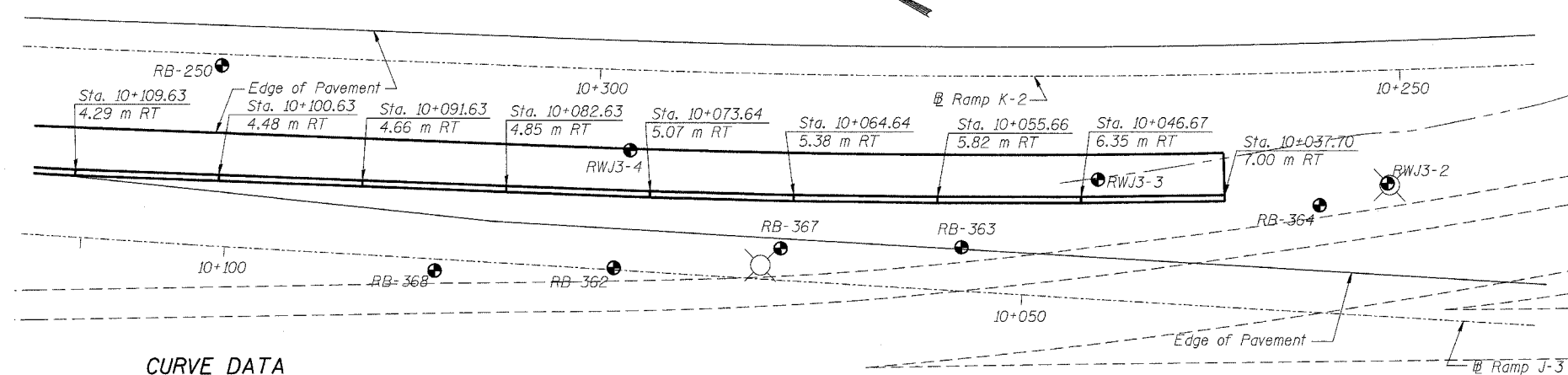
1. Reinforcement Bars shall conform to the requirements of AASHTO M-31M, or M-322M Grade 400.
2. See Special Provisions for installation and testing of Permanent Ground Anchors.
3. Shear Studs shall be 19mm diameter x 200mm granular or Solid flux filled headed studs automatically end welded to the front flange in field.
4. The geocomposite wall drain shall be constructed according to section 591 of the Standard Specifications. The contractor shall insure that the bottom, sides and the top edges are protected from soil entering or sealing the drain while placing the pervious fabric side of the drain toward the soil. Geocomposite wall drain shall be installed in stages as the excavation proceeds downward. Splicing should be minimized, following proper splice practices to insure no long term soil contamination.
5. All dimensions are in millimeters (mm) except as noted.
6. All Construction joints shall be bonded.



ELEVATION
(Looking East)

TOTAL BILL OF MATERIAL

Item	Unit	Quantity
Untreated Timber Lagging	m ²	633
Concrete Structures	m ³	515.9
Reinforcement Bars, Epoxy Coated	kg	51550
Drilling & Setting Soldier Piles	m ³	241.7
Permanent Ground Anchors	Each	98
Furnishing Soldier Piles (Built up section)	m	573.0
Furnishing Soldier Piles (W section)	m	131.3
Geocomposite Wall Drain	m ²	364
French Drains	m ³	16
Name Plates	Each	1
Stud Shear Connectors	Each	2686
Structure Excavation	m ³	216
Form Liner Grid and Fin Surface	m ²	585.3
Porous Granular Embankment	m ³	1858



PLAN

CURVE DATA

RAMP J-3		RAMP K-2	
Δ = 6°05'48.00"		Δ = 7°58'57.09"	
R = 450.000 m			
T = 23.964 m		T = 40.469 m	
L = 47.883 m		L = 80.806 m	
E = 0.638 m		E = 1.410 m	
PC = 10+204.232		PC = 10+423.959	
PI = 10+228.196		PI = 10+481.535	
PT = 10+252.115		PT = 10+504.765	
SE = 6.2%		SE = 4.4%	

Transition In: 10+177 to 10+218 Transition In: 10+385 to 10+443
 Transition out: 10+237 to 10+283 Transition out: 10+486 to 10+544

STATION 10+040
 BUILT 200_ BY
 STATE OF ILLINOIS
 FAI RTE 74
 SECTION 90-11HB-5
 STR. NO. 090-8512
NAME PLATE
 See Std. 515001

Note: All retaining wall stations/offsets are off J-3 Baseline.

LIN ENGINEERING, LTD.
 20 E. Chestnut
 Channahon, Illinois 62609
 (815) 493-4668 FAX: (815) 493-4706
 Designed By: MTH Checked By: KRB Drawn By: JMD
 Date: 09/02 File: rp0402-50808812.dgn

REVISIONS	NAME

ILLINOIS DEPARTMENT OF TRANSPORTATION
GENERAL PLAN AND ELEVATION
RETAINING WALL 81
F.A.I. RTE. 74 (I-74)
SECTION 90-11HB-5
TAZEWELL COUNTY
RAMP J-3 STATION 10+037 TO 10+213
S.N. 090-8512