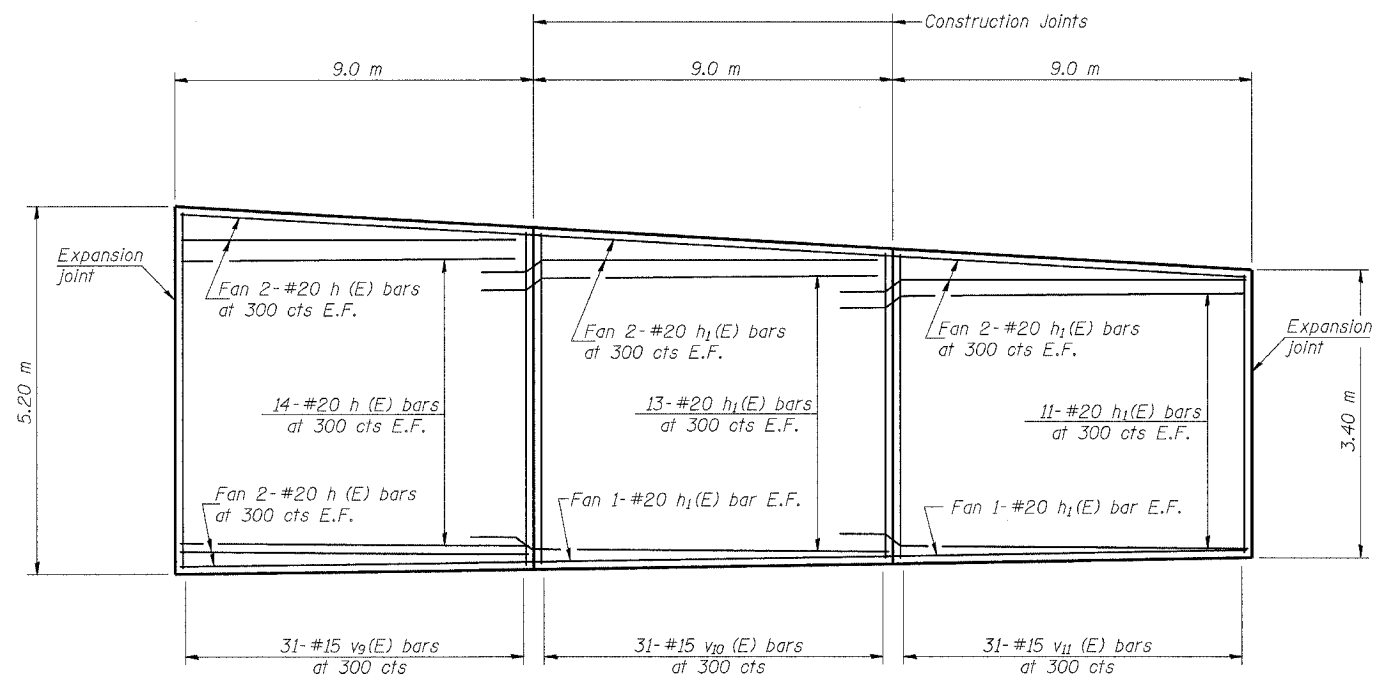


ELEVATION OF PANELS J TO L
(Looking From Front of Wall)



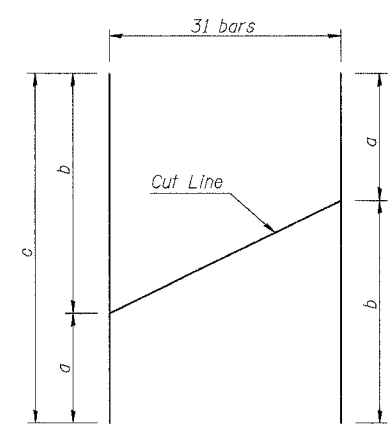
ELEVATION OF PANELS M TO O
(Looking From Front of Wall)

E.F. Indicates each face.

BILL OF MATERIAL

Bar	No.	Size	Length (m)	Shape
h(E)	80	#20	8.92	—
h ₁ (E)	138	#20	9.79	—
v ₇ (E)	186	#15	4.00	—
v ₈ (E)	93	#15	5.20	—
v ₉ (E)	31	#15	9.59	—
v ₁₀ (E)	31	#15	8.39	—
v ₁₁ (E)	31	#15	7.16	—
Concrete Structures		m ³	100.9	
Reinforcement Bars, Epoxy Coated		kg	8020	

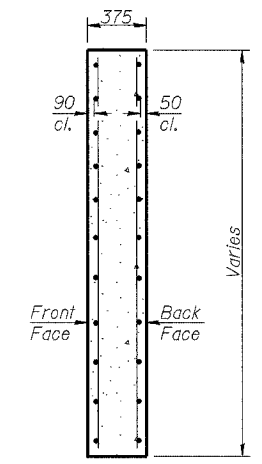
Reinforcement Bars designated (E) shall be epoxy coated. Bars indicated thus 1 x 2- #20 etc. indicates 1 line of bars with 2 lengths per line. The horizontal bars shall be bent at the joints to account for the nonlinear wall alignment. Cost included in "Reinforcement Bars, Epoxy Coated."



BAR CUTTING DIAGRAM v(E) BARS
(Length in meters)

Bar	a	b	c
v ₈ (E)	2.77	2.43	5.20
v ₉ (E)	5.08	4.51	9.59
v ₁₀ (E)	4.51	3.88	8.39
v ₁₁ (E)	3.88	3.28	7.16

Note: Order bars full length. Cut bars as shown & use remainder on the other face of wall.



SECTION THRU PANEL

MIN BAR LAP
#15 Bars= 640
#20 Bars= 790

LIN ENGINEERING, LTD.
20 W. Chestnut
CITY 483-488
Chicago, Illinois 60629
FAX (773) 483-4706
Designed By: MTH Checked By: KHS Drawn By: JMD
Date: 09/02 File: r20409-5060852.dgn

REVISIONS	NAME

ILLINOIS DEPARTMENT OF TRANSPORTATION
CONCRETE FACING
RETAINING WALL 81
F.A.I. RTE. 74 (I-74)
SECTION 90-11HB-5
TAZEWELL COUNTY
RAMP J-3 STATION 10+037 TO 10+213
S.N. 090-8512