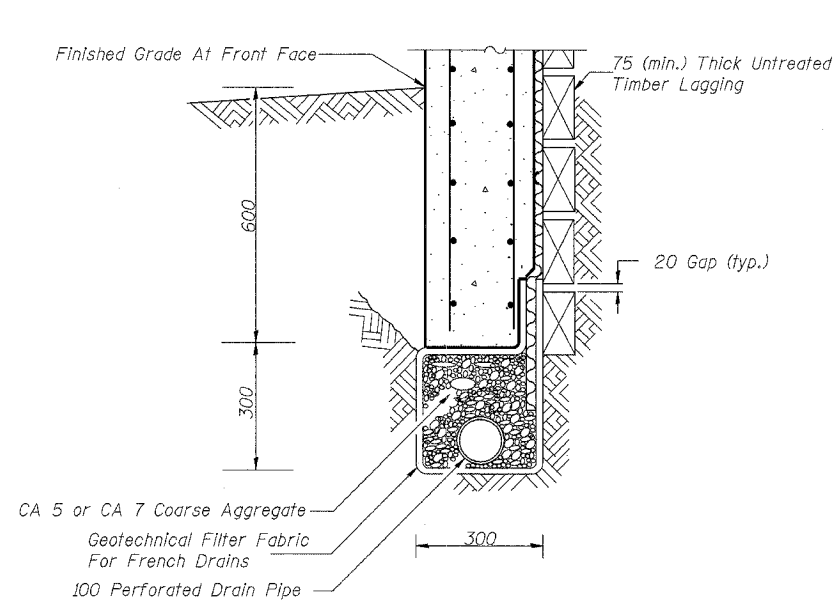
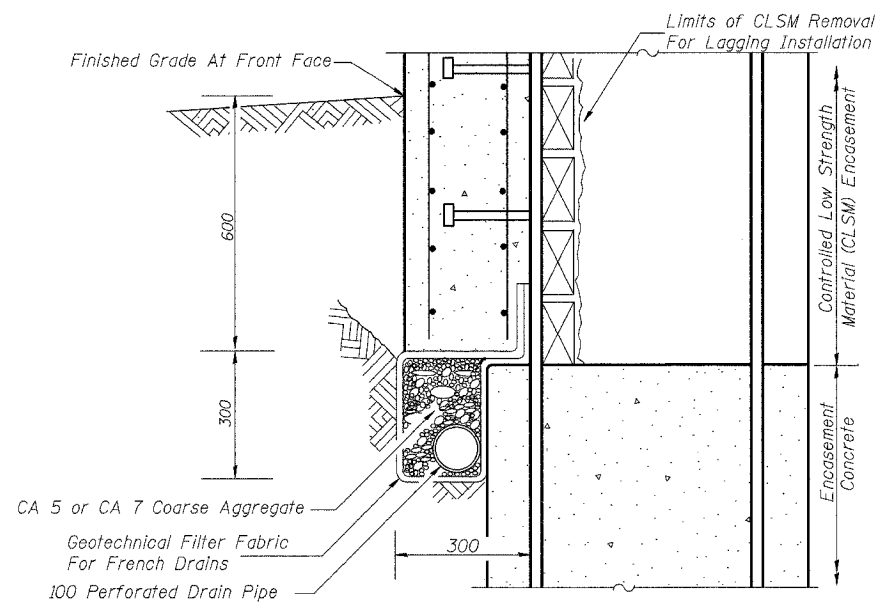


ROUTE NO.	SECTION	COUNTY	TOTAL SHEETS	SHEET NO.	SHEET NO.
FAI 74	*	TAZEWELL	13/16	6/2	21 SHEETS
FED. ROAD DIST. NO. 7		ILLINOIS	FED. ROAD PROJECT		
*90-11HB-5					



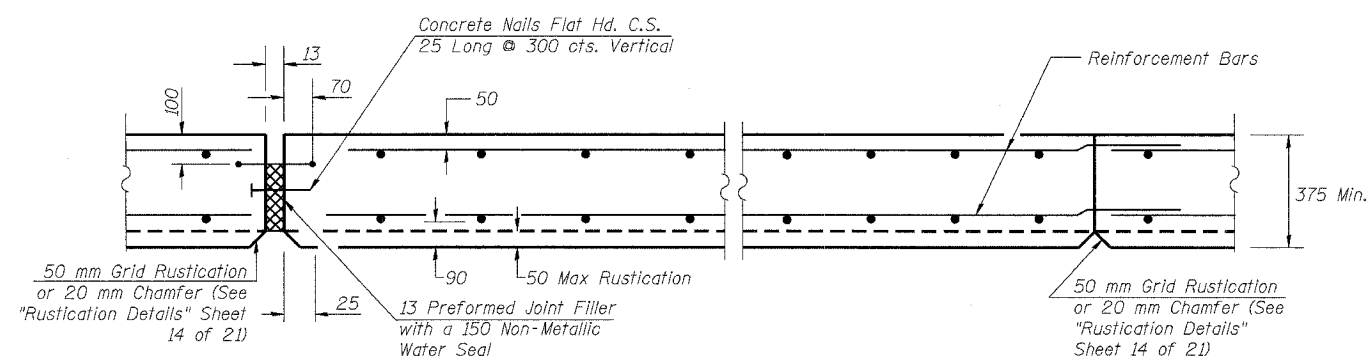
BETWEEN SOLDIER PILES



AT SOLDIER PILES

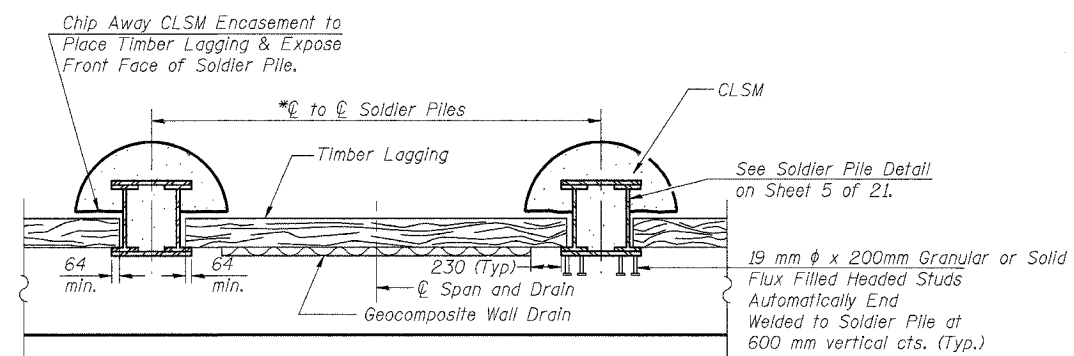
FRENCH DRAIN DETAIL

The French Drain installation shall follow Section 601 of the Standard Specifications except that the trench backfill shall consist of CA-5 or CA-7 coarse aggregate. The trench shall be lined with geotechnical fabric for French Drains and have a 100 mm diameter drain pipe located near the base of the excavation. The cost of the geotechnical fabric and drain pipe is included with the pay item French Drains.



EXPANSION JOINT

CONSTRUCTION JOINT



SECTION E-E

* The Contractor is Responsible for the Design and Performance of the Temporary Lagging Using No Less than a 75 mm Rough-Sawn Lagging Thickness and Minimum fb = 7 MPa.

ILLINOIS DEPARTMENT OF TRANSPORTATION
MISCELLANEOUS DETAILS
 RETAINING WALL 81
 F.A.I. RTE. 74 (I-74)
 SECTION 90-11HB-5
 TAZEWELL COUNTY
 RAMP J-3 STATION 10+037 TO 10+213
 S.N. 090-8512

LIN ENGINEERING, LTD.

20 N. Chestnut
 Channahon, Illinois 62629
 (815) 483-4838
 FAX (815) 483-4706
 Designed By: MTH
 Checked By: KRD
 Drawn By: JMD
 Date: 09/02
 File: rp0411-500908512.dgn

REVISIONS	
NO.	NAME