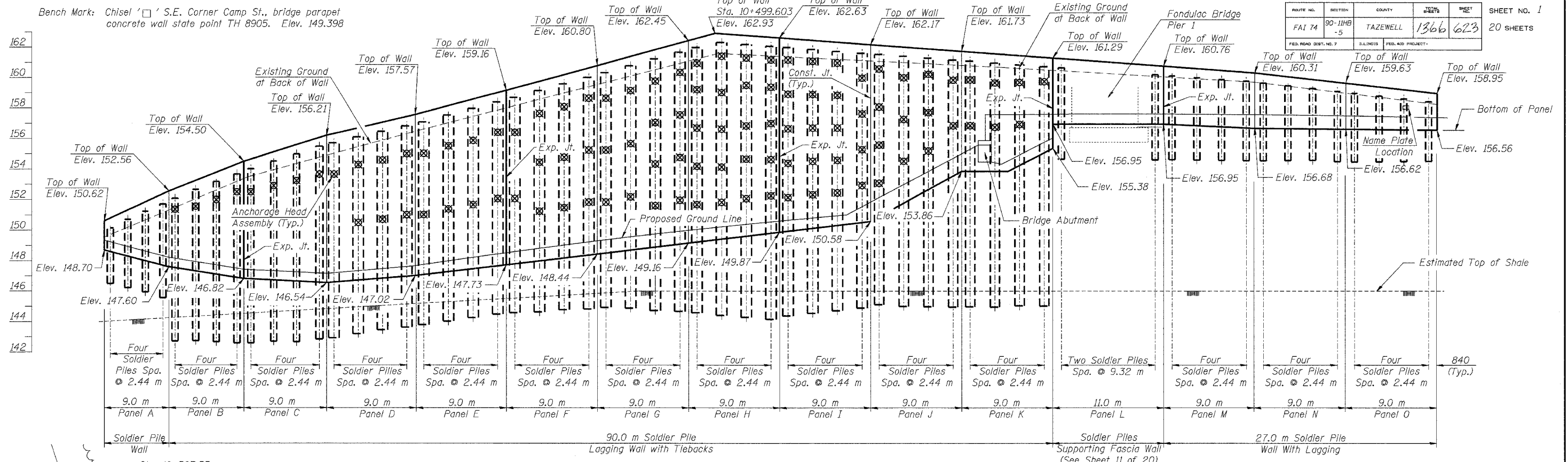
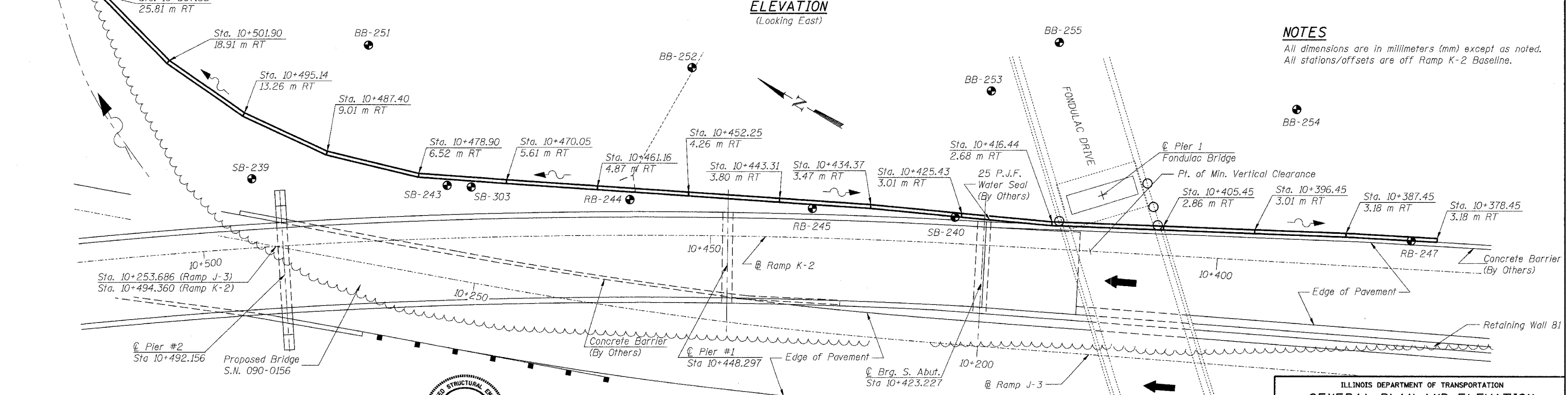


ROUTE NO.	SECTION	COUNTY	DATE	SHEET	SHEET NO.
FAI 74	90-11HB-5	TAZEWELL	1366	623	20 SHEETS
FED. ROAD DIST. NO. 7		ILLINOIS	FED. AID PROJECT		



**NOTES**  
 All dimensions are in millimeters (mm) except as noted.  
 All stations/offsets are off Ramp K-2 Baseline.



**DESIGN STRESSES**

$f'_c = 24 \text{ MPa (Concrete)}$   
 $f'_g = 27.5 \text{ MPa (Grout)}$   
 $f_y = 400 \text{ MPa (Reinf.)}$   
 $f_y = 345 \text{ MPa (Soldier Piles) (M270 M Grade 345)}$   
 $f'_s = 1860 \text{ MPa (15mm } \phi \text{ Low Lax Strands)}$   
 $f'_{st} = 1395 \text{ MPa (15mm } \phi \text{ Low Lax Strands)}$

Michael J. Haley  
 Michael T. Haley  
 Licensed Structural Engineer  
 State of Illinois No. 81-5991  
 12-20-04  
 Date

**DESIGN SPECIFICATIONS**  
 1996 AASHTO Specifications  
 with 1997 thru 2000 Interim

**LI ENGINEERING, LTD.**  
 20 W. Chestnut  
 Chicago, Illinois 60623  
 Tel: (312) 462-4100  
 Designed By: WTH  
 Checked By: KRQ  
 Drawn By: JND  
 Date: 09/02  
 File: rp0401-580908513.dgn

REVISIONS	
NO.	NAME

ILLINOIS DEPARTMENT OF TRANSPORTATION  
**GENERAL PLAN AND ELEVATION**  
**RETAINING WALL 82**  
**F.A.I. RTE. 74 (I-74)**  
**SECTION 90-11HB-5**  
**TAZEWELL COUNTY**  
**RAMP K-2 STATION 10+378 TO 10+507**  
**STRUCTURE NUMBER 090-8513**