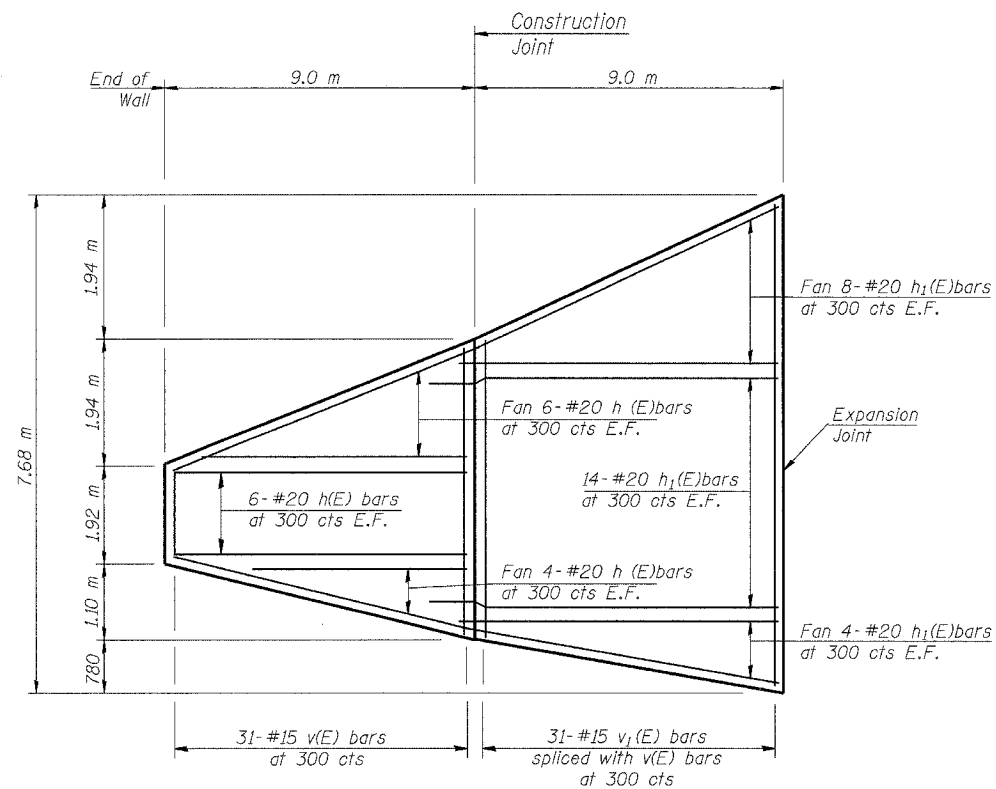
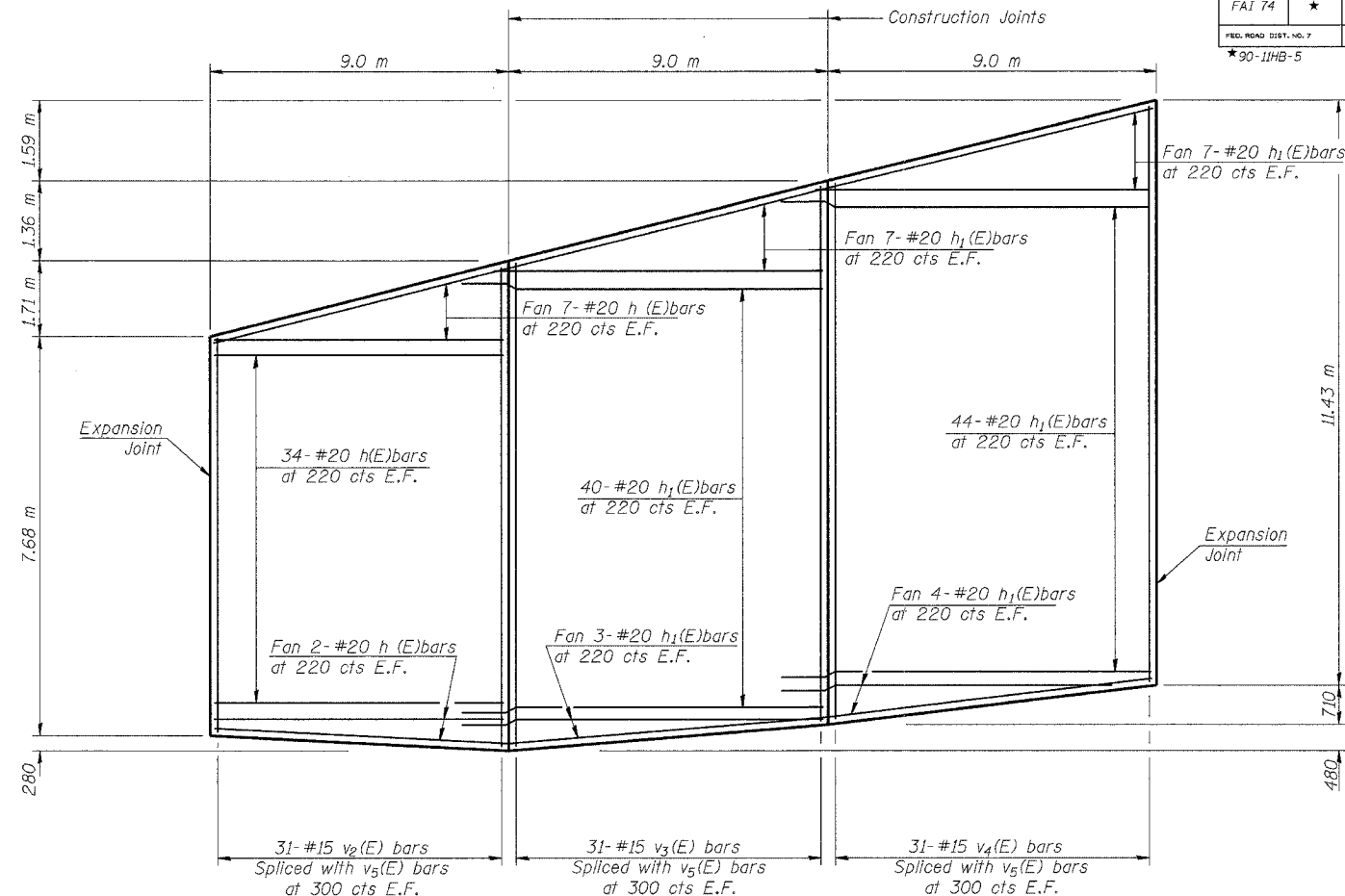


ROUTE NO.	SECTION	COUNTY	SHEET	SHEET	SHEET NO.
FAI 74	*	TAZEWELL	1366	629	20 SHEETS
FED. ROAD DIST. NO. 7		ILL. PROJ. NO.	FED. AID PROJECT		
*90-11HB-5					



ELEVATION OF PANELS A & B
(Looking From Front of Wall)



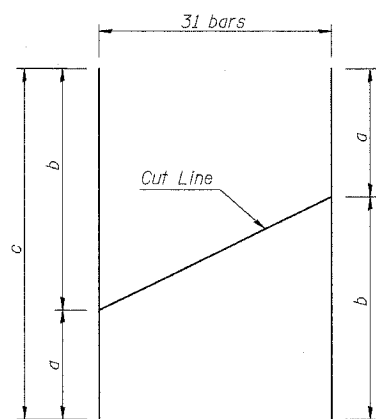
ELEVATION OF PANELS C TO E
(Looking From Front of Wall)

E.F. indicates each face.

BILL OF MATERIAL

Bar	No.	Size	Length (m)	Shape
h(E)	118	#20	8.92	—
h1(E)	262	#20	9.79	—
v(E)	62	#15	6.63	—
v1(E)	31	#15	7.05	—
v2(E)	31	#15	4.39	—
v3(E)	31	#15	7.26	—
v4(E)	31	#15	9.02	—
v5(E)	186	#15	7.00	—
Concrete Structures		m ³	132.4	
Reinforcement Bars, Epoxy Coated		kg	12560	

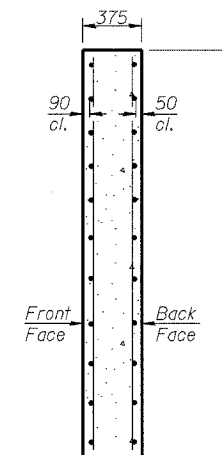
Reinforcement Bars designated (E) shall be epoxy coated. Bars indicated thus 1 x 2- #20 etc. indicates 1 line of bars with 2 lengths per line. The horizontal bars shall be bent at the joints to account for the nonlinear wall alignment. Cost included in "Reinforcement Bars, Epoxy Coated."



BAR CUTTING DIAGRAM v(E) BARS
(Length in meters)

Bar	a	b	c
v(E)	1.81	4.82	6.63
v1(E)	3.68	3.37	7.05
v2(E)	1.21	3.18	4.39
v3(E)	3.19	4.07	7.26
v4(E)	4.07	4.95	9.02

Note: Order bars full length. Cut bars as shown & use remainder on the other face of wall.



SECTION THRU PANEL

MIN BAR LAP
#15 Bars = 640
#20 Bars = 790

LIN ENGINEERING, LTD.
260 W. Chestnut
Channahon, Illinois 62629
2611-451-4646
2611-451-4700
Fax: 2611-451-4700
Designed By: MTH Checked By: KRG | Drawn By: JMD
Date: 09/02 File: rp04070606513.dgn

REVISIONS	
NO.	NAME

ILLINOIS DEPARTMENT OF TRANSPORTATION
CONCRETE FACING
RETAINING WALL 82
F.A.I. RTE. 74 (I-74)
SECTION 90-11HB-5
TAZEWELL COUNTY
RAMP K-2 STATION 10+378 TO 10+507
STRUCTURE NUMBER 090-8513