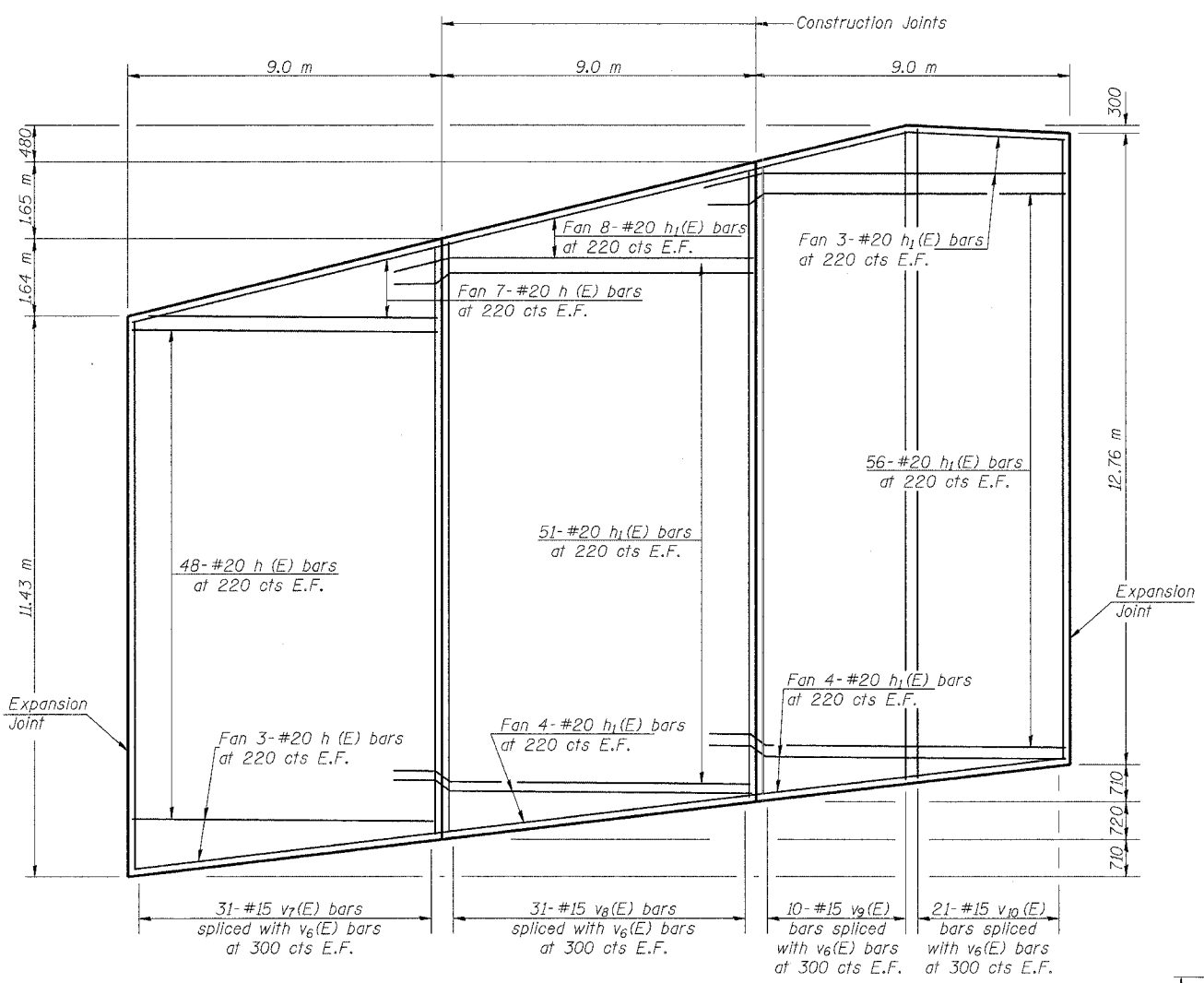
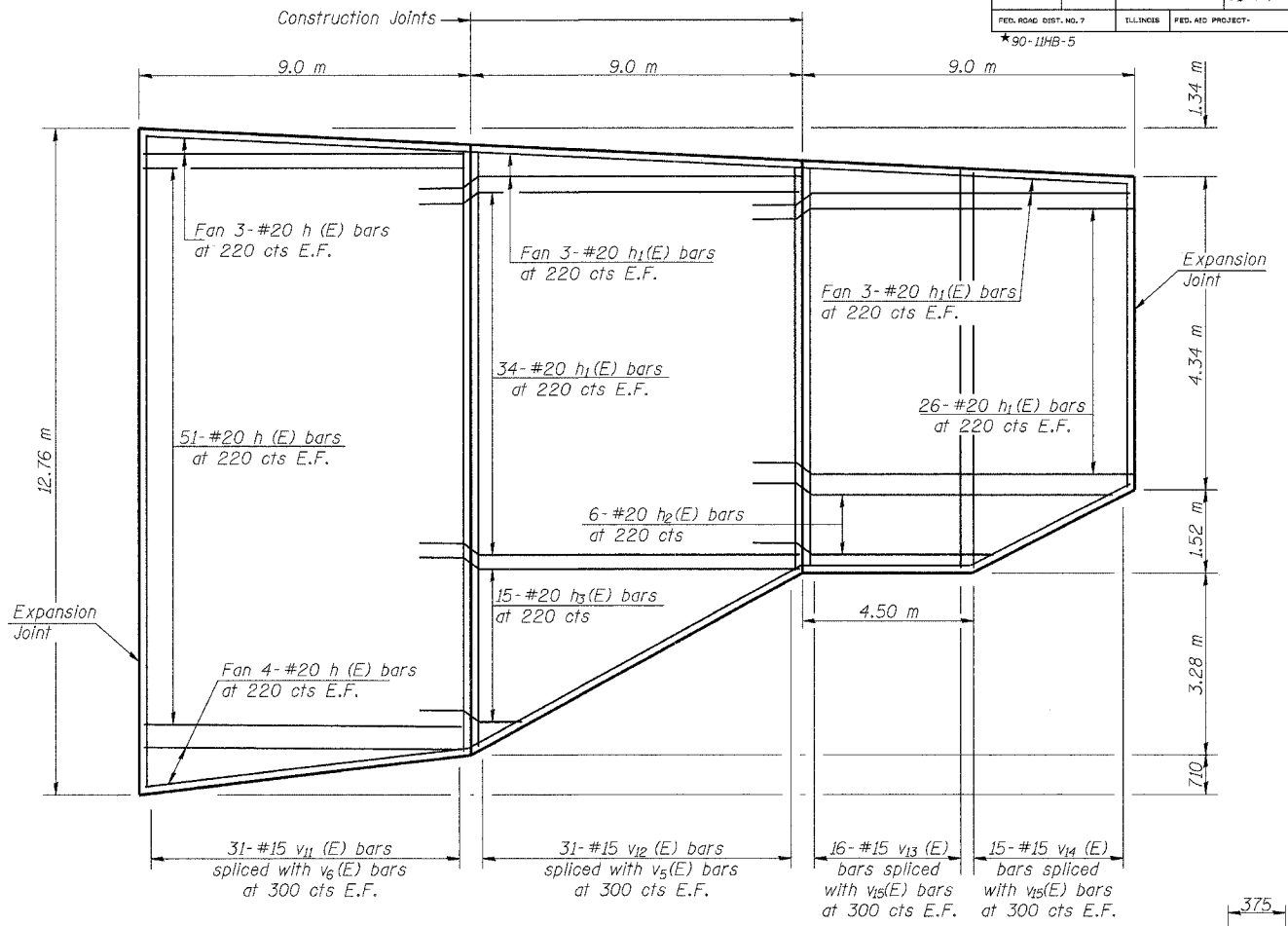


ROUTE NO.	SECTION	COUNTY	TOTAL SHEETS	SHEET	SHEET NO.
FAI 74	*	TAZEWELL	1366	630	20 SHEETS
FED. ROAD DIST. NO. 7	ILLINOIS	FED. AID PROJECT			
*90-11HB-5					



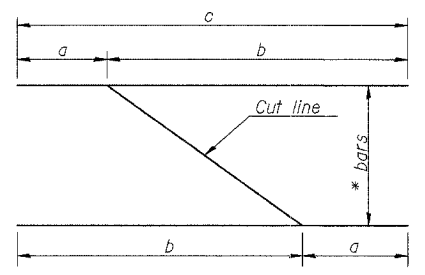
ELEVATION OF PANELS F TO H
(Looking From Front of Wall)



ELEVATION OF PANELS I TO K
(Looking From Front of Wall)

BILL OF MATERIAL

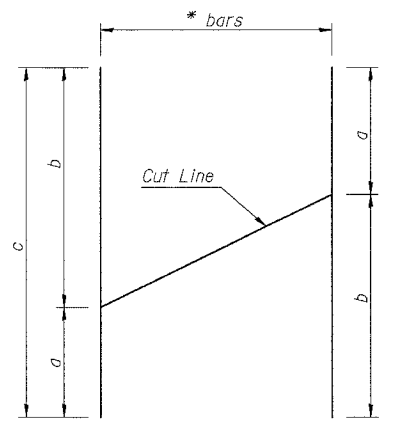
Bar	No.	Size	Length (m)	Shape
h(E)	232	#20	8.92	—
h ₁ (E)	384	#20	9.79	—
h ₂ (E)	6	#20	14.92	—
h ₃ (E)	15	#20	10.31	—
v ₅ (E)	62	#15	7.00	—
v ₆ (E)	248	#15	9.00	—
v ₇ (E)	31	#15	6.82	—
v ₈ (E)	31	#15	8.68	—
v ₉ (E)	10	#15	9.90	—
v ₁₀ (E)	21	#15	9.37	—
v ₁₁ (E)	31	#15	7.38	—
v ₁₂ (E)	31	#15	6.49	—
v ₁₃ (E)	16	#15	6.56	—
v ₁₄ (E)	15	#15	4.61	—
v ₁₅ (E)	62	#15	5.00	—
Concrete Structures		m ³	224.8	
Reinforcement Bars, Epoxy Coated		kg	21150	



BAR CUTTING DIAGRAM h BARS
(Length in meters)

Bar	a	b	c	*
h ₂ (E)	5.83	9.09	14.92	6
h ₃ (E)	1.23	9.08	10.31	15

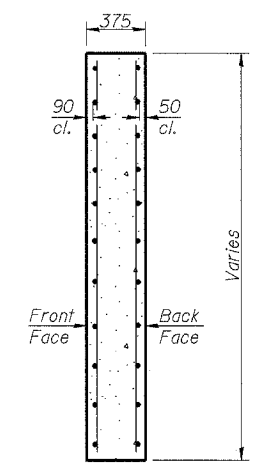
Reinforcement Bars designated (E) shall be epoxy coated. Bars indicated thus 1 x 2- #20 etc. indicates 1 line of bars with 2 lengths per line. The horizontal bars shall be bent at the joints to account for the nonlinear wall alignment. Cost included in "Reinforcement Bars, Epoxy Coated." Note: Order bars full length. Cut bars as shown & use remainder on the other face of wall.



BAR CUTTING DIAGRAM v(E) BARS
(Length in meters)

Bar	a	b	c	*
v ₇ (E)	2.95	3.87	6.82	31
v ₈ (E)	3.88	4.80	8.68	31
v ₉ (E)	4.81	5.09	9.90	10
v ₁₀ (E)	5.09	4.28	9.37	21
v ₁₁ (E)	4.27	3.11	7.38	31
v ₁₂ (E)	5.09	1.40	6.49	31
v ₁₃ (E)	3.39	3.17	6.56	16
v ₁₄ (E)	3.17	1.44	4.61	15

E.F. indicates each face.



SECTION THRU PANEL

MIN BAR LAP
#15 Bars= 640
#20 Bars= 790

LIN ENGINEERING LTD.
20 W. Chestnut
CITY 483-468
Designed By: MTH
Date: 05/02

2707th St. #1016
FAX: (773) 483-4706
Checked By: KRG
File: r20408-00000815.dgn

REVISIONS	NAME

ILLINOIS DEPARTMENT OF TRANSPORTATION
CONCRETE FACING
RETAINING WALL 82
F.A.I. RTE. 74 (I-74)
SECTION 90-11HB-5
TAZEWELL COUNTY
RAMP K-2 STATION 10+378 TO 10+507
STRUCTURE NUMBER 090-8513