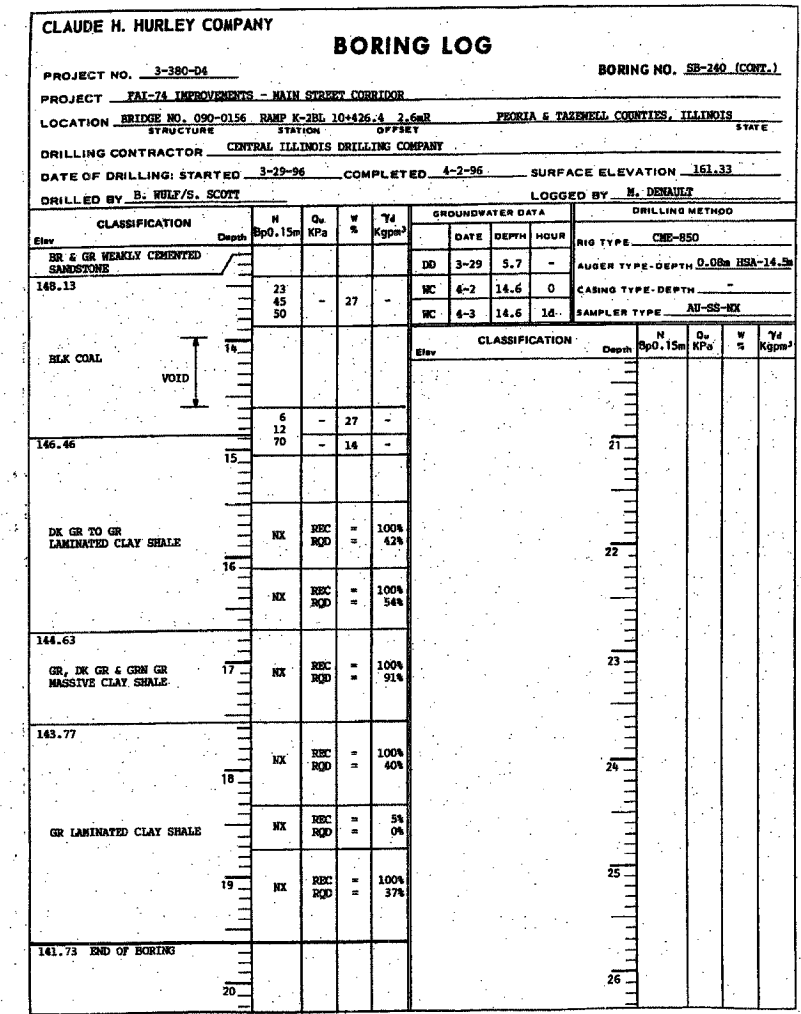
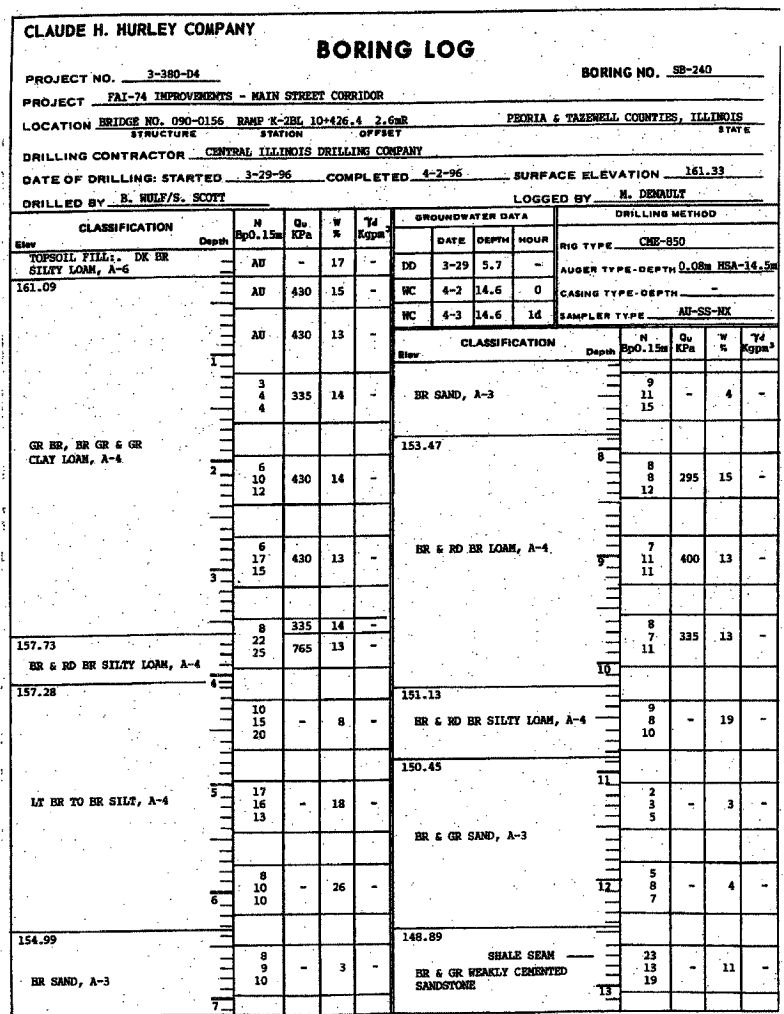
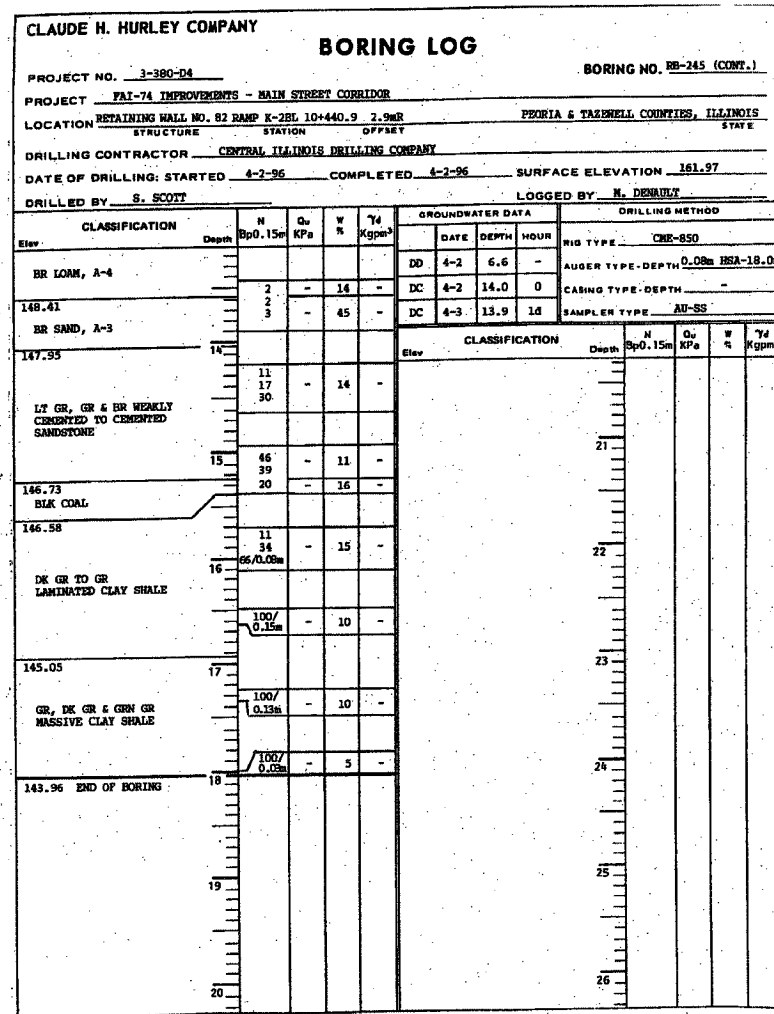


ROUTE NO.	SECTION	COUNTY	DATE	NO.	SHEET NO. 17
FAI 74	*	TAZEWELL	1366	639	20 SHEETS
FILLING DIST. NO. 7					
*90-11HB-5					



ILLINOIS DEPARTMENT OF TRANSPORTATION
 SOIL BORING DATA
 RETAINING WALL 82
 F.A.I. RTE. 74 (I-74)
 SECTION 90-11HB-5
 TAZEWELL COUNTY
 RAMP K-2 STATION 10+378 TO 10+507
 STRUCTURE NUMBER 090-8513

REVISIONS

NO.	DATE	DESCRIPTION

LIN ENGINEERING, LTD.
 230 N. Chestnut
 Chatham, Illinois 62633
 (618) 483-4688 FAX (618) 483-4706
 Designed By: MTH Checked By: KRC Drawn By: JMD
 Date: 05/02 File: r20417-50908513.dgn