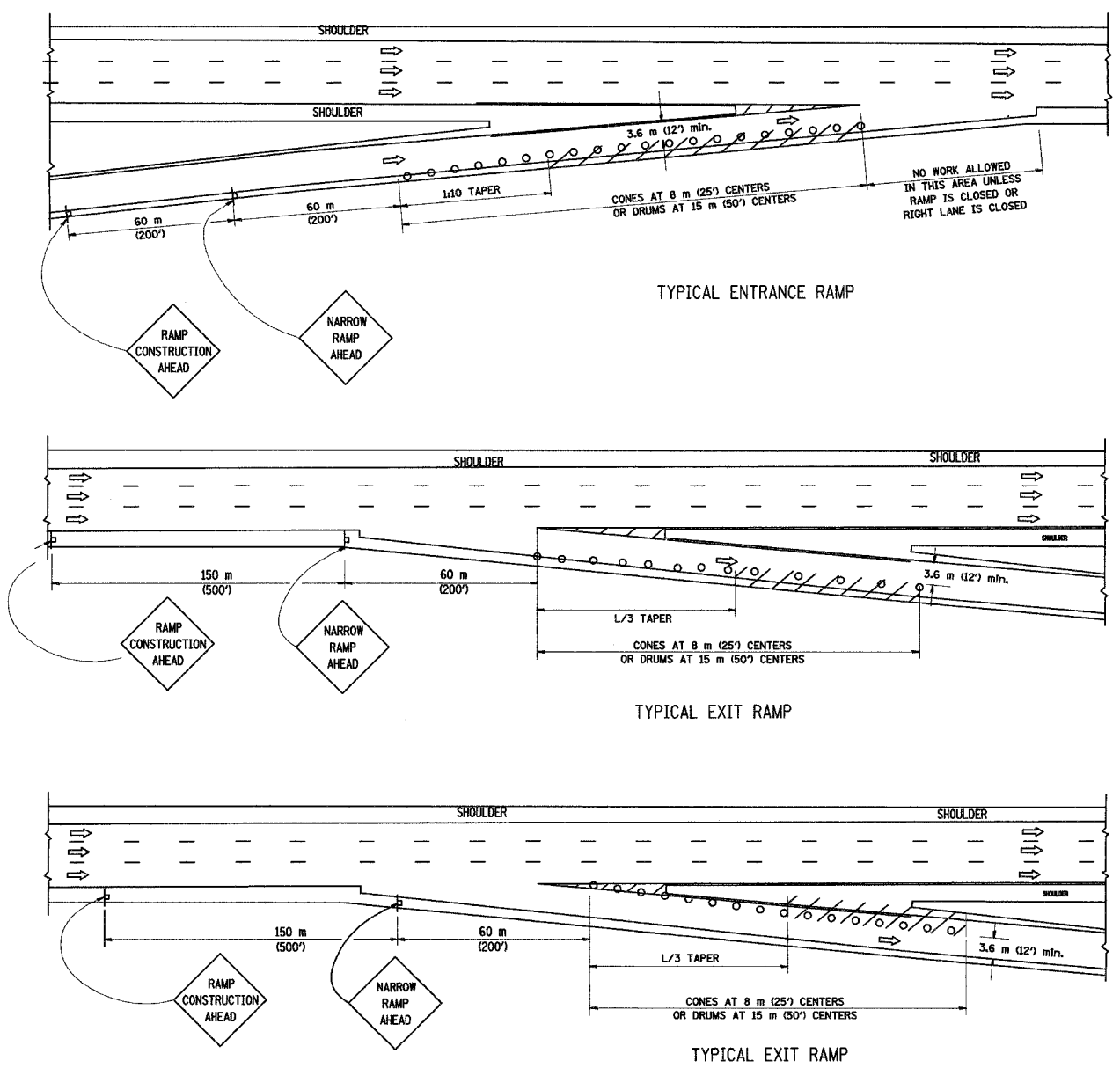


I:\Projects\17451050505011.dgn 12/16/2004 4:09:30 PM

68201

F.A. - RTE.	SECTION	COUNTY	TOTAL SHEETS NO.	SHEET NO.
			1366	679
STA.		TO STA.		
FED. ROAD DIST. NO.		ILLINOIS FED. AID PROJECT		

PARTIAL RAMP CLOSURE DETAILS

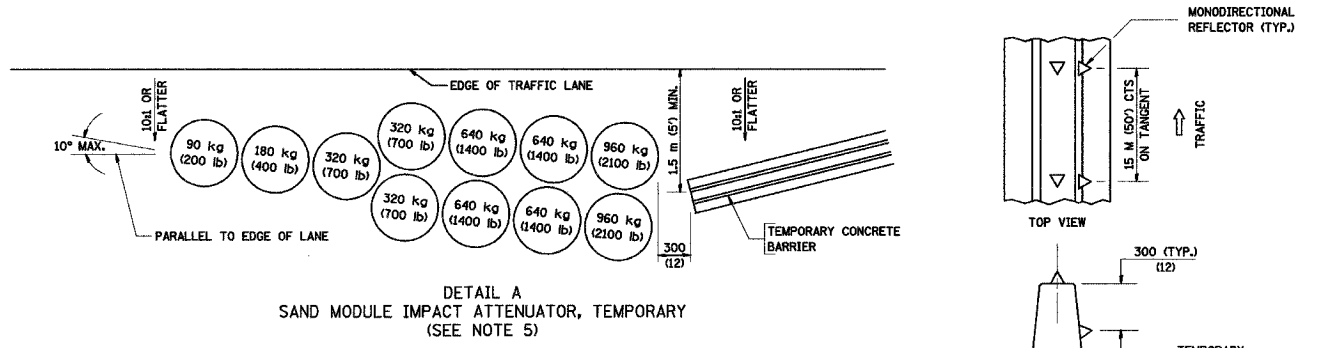
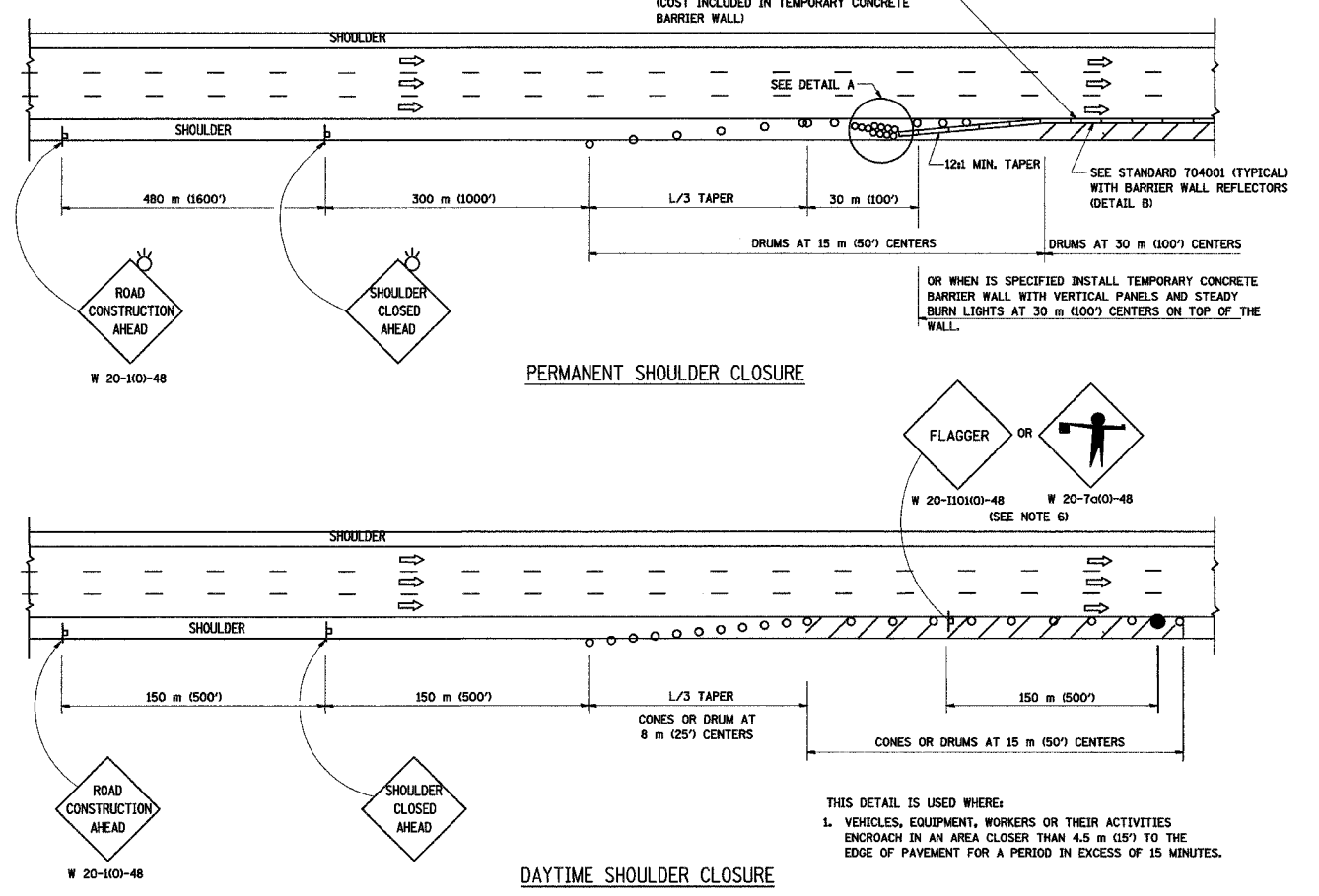


SYMBOLS

	WORK AREA
	SIGN ON PORTABLE OR PERMANENT SUPPORT
	FLAGGER WITH CONTROL SIGN
	DRUM WITH MONO-DIRECTIONAL STEADY BURNING LIGHT
	CONES - 700 (28) IN HEIGHT

- GENERAL**
- THE "L" DISTANCE EQUALS:
 SPEED LIMIT FORMULAS
 80 km/h (45 mph) METRIC ENGLISH
 OR GREATER: L=0.65(W)(S) L=(W)(S)
 W = WIDTH OF OFFSET IN METERS (FEET)
 S = NORMAL POSTED SPEED KM/H (MPH)
 - PLASTIC DRUMS WITH HIGH PERFORMANCE REFLECTIVE SHEETING AND STEADY BURNING LIGHTS ARE REQUIRED FOR ALL NIGHTTIME CLOSURES.
 - ALL SIGNS SHALL BE POST MOUNTED IF THE CLOSURE TIME EXCEEDS FOUR DAYS.
 - FLASHING LIGHTS SHALL BE USED DURING THE HOURS OF DARKNESS AND SHALL BE INSTALLED ABOVE THE FIRST TWO SETS OF SIGNS.

SHOULDER CLOSURE DETAILS



- NOTES**
- THE SAND MODULE IMPACT ATTENUATOR, TEMPORARY IS NOT REQUIRED WHEN THE TEMPORARY BARRIER END SECTION IS OUTSIDE THE CLEAR ZONE OR IS TIED INTO THE EXISTING GUARDRAIL.
 - THE FLAGGER AND FLAGGER SIGN ARE REQUIRED AT THE ABOVE WORK SITES WHEN:
 - FOUR OR MORE WORK VEHICLES ENTER THE TRAFFIC LANES IN A ONE HOUR PERIOD.
 - THE WORK ACTIVITY REQUIRES FREQUENT ENCROACHMENT INTO THE LANE OPEN TO TRAFFIC.
 THE FLAGGER SHALL BE STATIONED APPROXIMATELY 30 m (100') TO 60 m (200') IN ADVANCE OF THE WORKERS.

REVISIONS

NAME	DATE
REM. END SECTION	4/17/02
REM. ARROWBOARD	8/30/02
MODIFY TO RAMP CONST.	8/30/02

ALL DIMENSIONS ARE IN MILLIMETERS (INCHES) UNLESS OTHERWISE SHOWN

ILLINOIS DEPARTMENT OF TRANSPORTATION
 I-74 PROJECT STANDARD 701101-174
 TRAFFIC CONTROL DETAILS FOR FREEWAY SHOULDER CLOSURES
 PARTIAL RAMP CLOSURES
 DRAWN BY
 DATE 03/28/02
 CHECKED BY