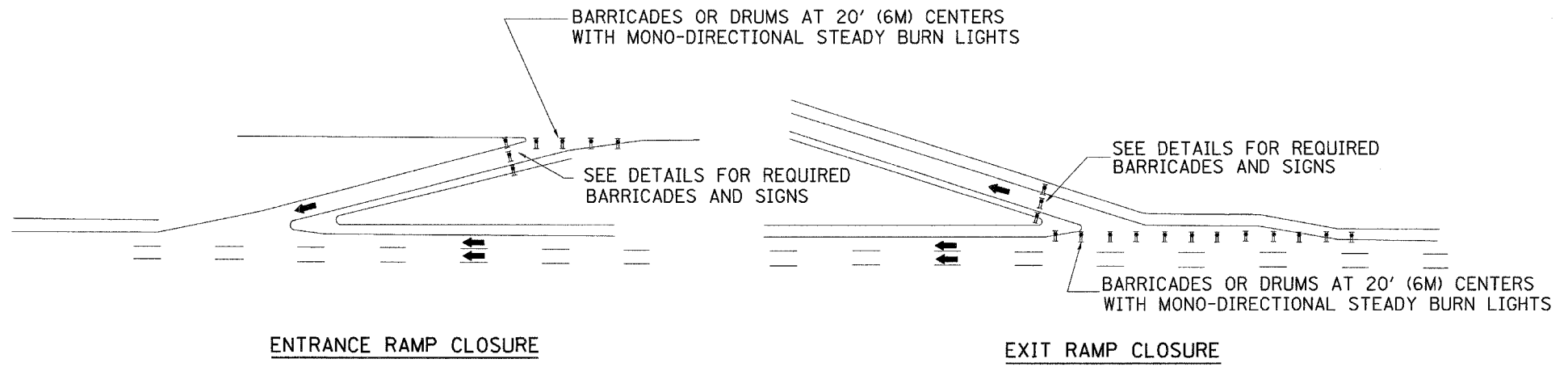


C:\PROGRA~1\Autocad\acad1.dwg 12/15/2004 4:08:49 PM

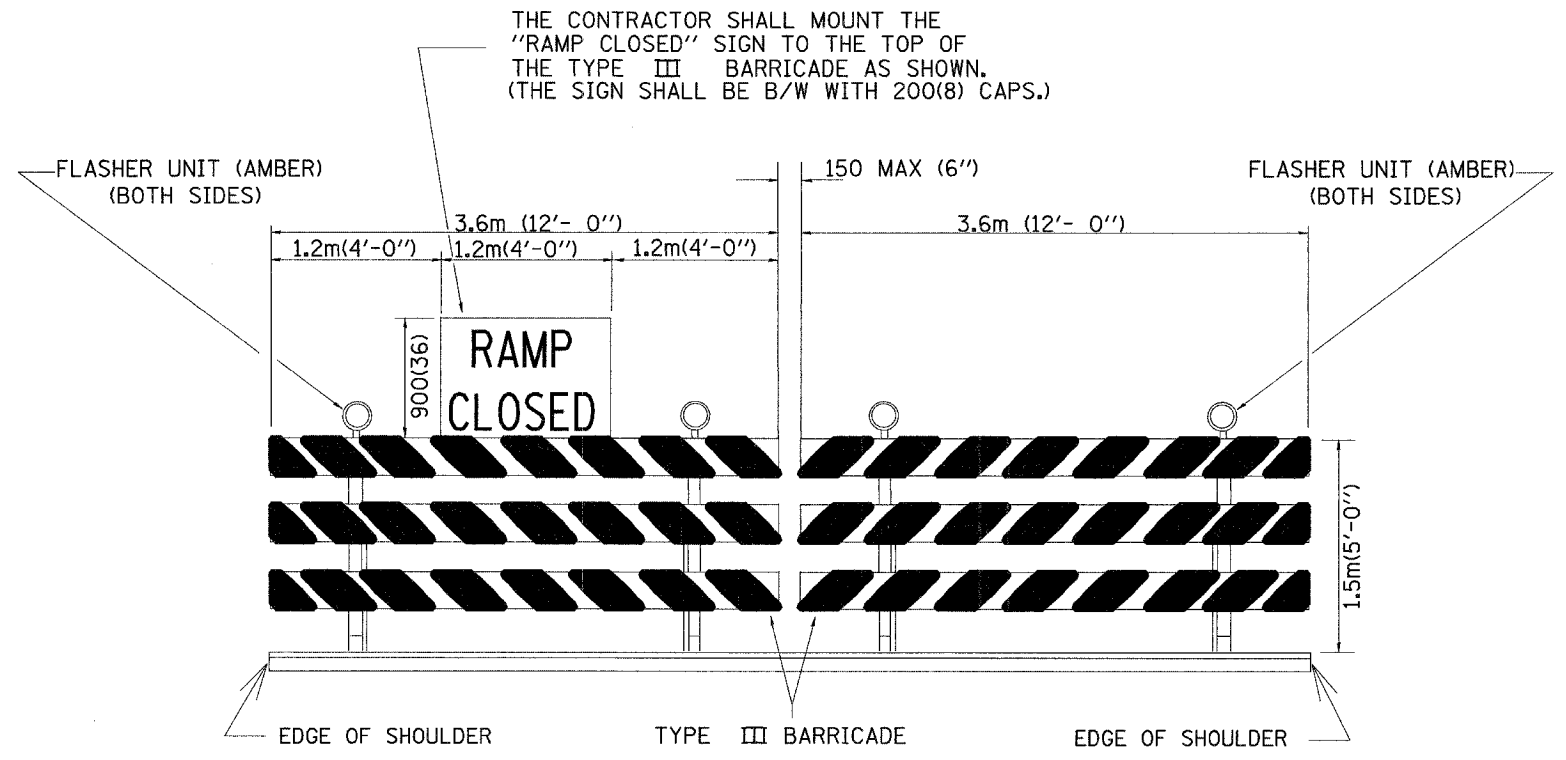
88201

F.A. RTE.	SECTION	COUNTY	TOTAL SHEETS	SHEET NO.
			1366	681
STA.		TO STA.		
FED. ROAD DIST. NO.		ILLINOIS FED. AID PROJECT		



ENTRANCE RAMP CLOSURE

EXIT RAMP CLOSURE



DETAIL FOR REQUIRED BARRICADES & SIGNS



PLACE 150 M (500') IN ADVANCE OF RAMP

BLACK LEGEND ON ORANGE REFLECTORIZED BACKGROUND  
RAMP CLOSED AHEAD SIGN

THE CONTRACTOR SHALL MOUNT THE "RAMP CLOSED" SIGN TO THE TOP OF THE TYPE III BARRICADE AS SHOWN. (THE SIGN SHALL BE B/W WITH 200(8) CAPS.)

**NOTES:**

1. CONES MAY BE SUBSTITUTED FOR TYPE I AND TYPE II BARRICADES AND DRUMS DURING DAY OPERATIONS. CONES SHALL BE A MINIMUM OF 700 (28") IN HEIGHT.
2. STEADY BURN LIGHTS WILL NOT BE REQUIRED FOR DAY OPERATIONS.

All dimensions are in millimeters (inches) unless otherwise noted.

DATE	REVISIONS	BY

ILLINOIS DEPARTMENT OF TRANSPORTATION  
 I-74 PROJECT STANDARD 701411-174  
 ENTRANCE AND EXIT RAMP CLOSURE DETAILS  
 SCALE: NONE DRAWN BY  
 DATE 10/09/01 CHECKED BY