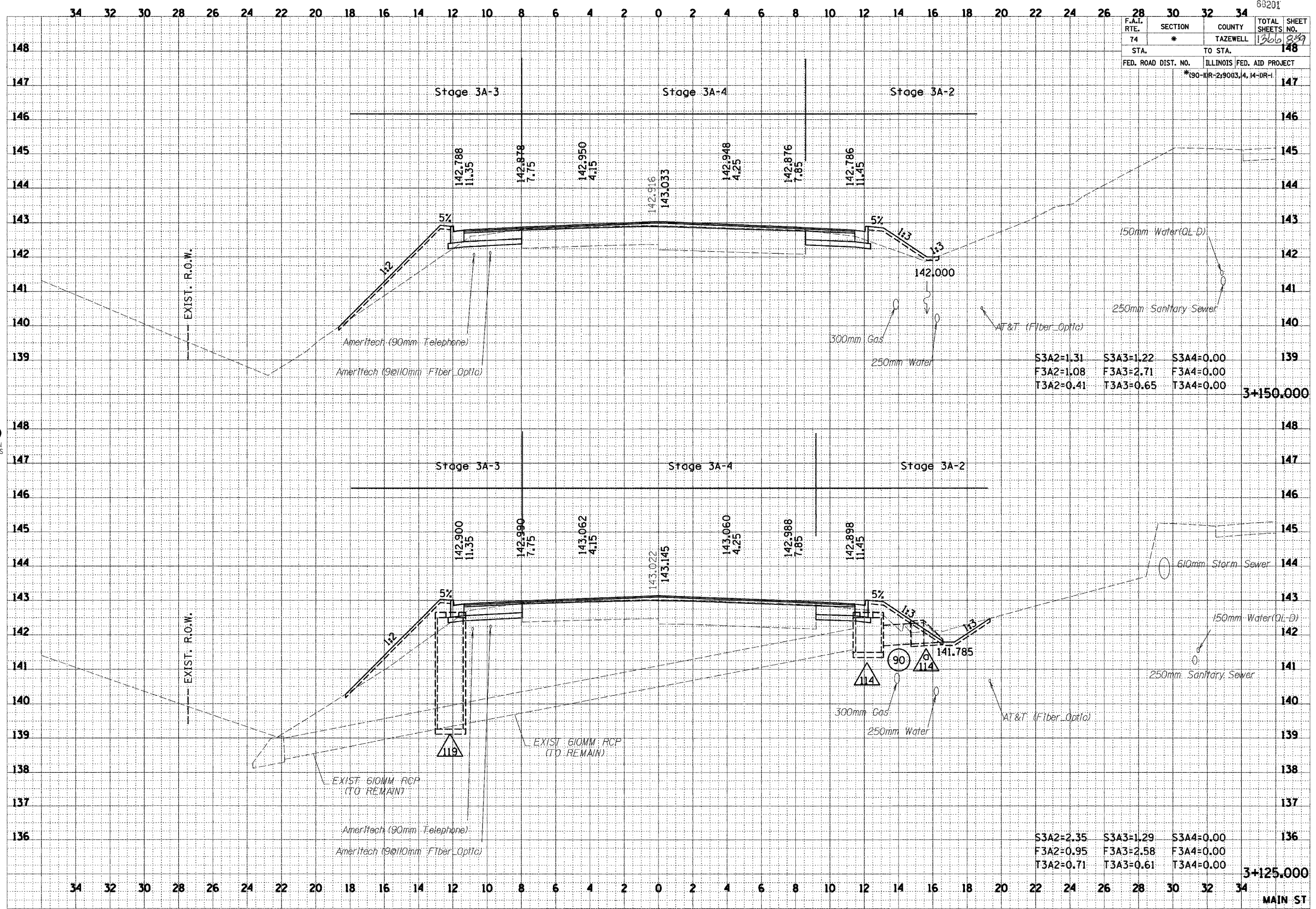


I:\projects\101151\101151.dwg 12/16/2003 3:56:34 PM

63201



F.A.I. RTE.	SECTION	COUNTY	TOTAL SHEETS	SHEET NO.
74	*	TAZEWELL	1260	849
STA. TO STA.		148		
FED. ROAD DIST. NO.		ILLINOIS FED. AID PROJECT		
		*(90-11R-2)9003, 4, 14-DR-1		

FINAL SURVEY	DATE
SURVEYED	
NOTE BOOK	
AREAS CHECKED	
BY	

ORIGINAL SURVEY	DATE
SURVEYED	
NOTE BOOK	
AREAS CHECKED	
BY	

URS
URS CORPORATION
DECATUR, ILLINOIS

S3A2=1.31	S3A3=1.22	S3A4=0.00
F3A2=1.08	F3A3=2.71	F3A4=0.00
T3A2=0.41	T3A3=0.65	T3A4=0.00

S3A2=2.35	S3A3=1.29	S3A4=0.00
F3A2=0.95	F3A3=2.58	F3A4=0.00
T3A2=0.71	T3A3=0.61	T3A4=0.00

3+150,000

3+125,000

MAIN ST