

\\nas02\proj\101-594.dwg 12/16/2004 4:00:57 PM

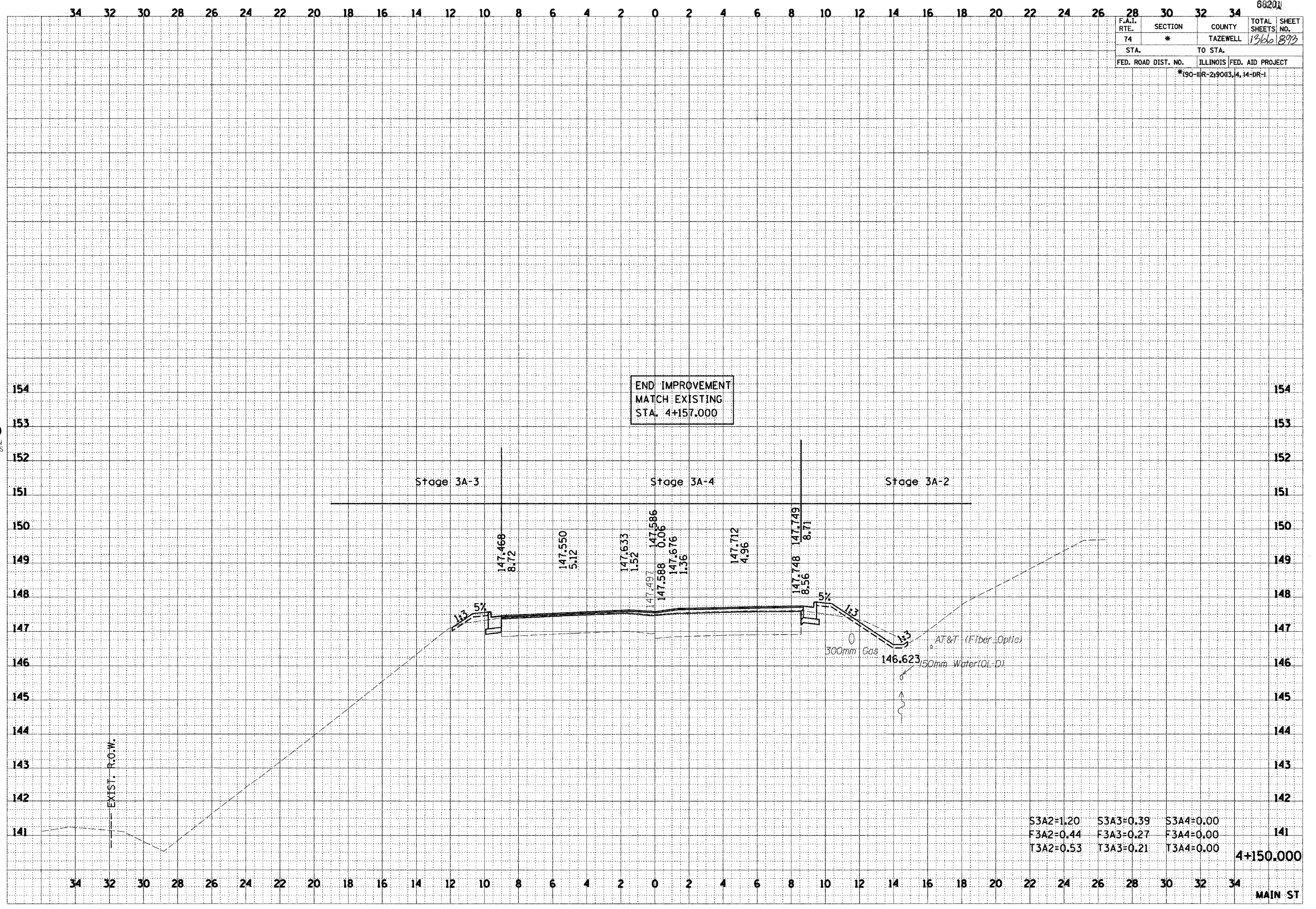
88201

F.A.I. RTE.	SECTION	COUNTY	TOTAL SHEETS	SHEET NO.
74	*	TAZEWELL	1366	893
STA.	TO STA.			
FED. ROAD DIST. NO.	ILLINOIS	FED. AID PROJECT		
*(90-III-2)9013,4,14-DR-1				

FINAL SURVEY	DATE
SURVEYED	
NOTE BOOK	
AREAS CHECKED	
BY	

ORIGINAL SURVEY	DATE
SURVEYED	
NOTE BOOK	
AREAS CHECKED	
BY	

**URS**  
URS CORPORATION  
DECATUR, ILLINOIS



4+150.000

MAIN ST