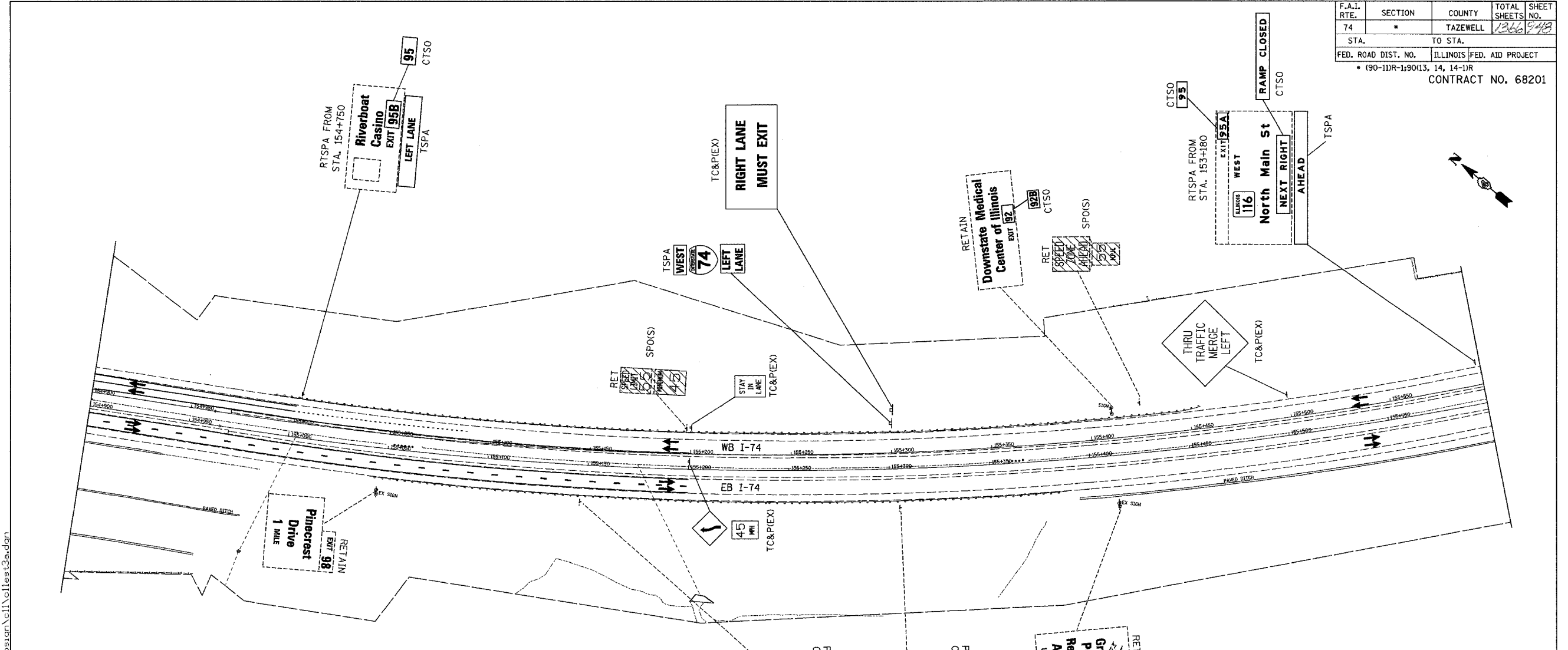



F.A.I. RTE.	SECTION	COUNTY	TOTAL SHEETS	SHEET NO.
74	*	TAZEWELL	1366	948
STA.	TO STA.			
FED. ROAD DIST. NO.	ILLINOIS FED. AID PROJECT			
		* (90-11)R-1;90(13, 14, 14-11R		
CONTRACT NO. 68201				



- LEGEND:**
- PERM SIGN, C68197 - PERMANENT SIGN, INSTALLED IN CONTRACT NO. 68199
 - TEMP SIGN, C68193 - EXISTING TEMPORARY SIGN INSTALLED IN CONTRACT 68195
 - RET - RETAIN EXISTING SIGN
 - PSR - REMOVAL IN PERMANENT SIGNING PLANS (TIMING OF REMOVAL INDICATED IN SUB-STAGE BY X'S)
 - RTSPA - REINSTALL TEMPORARY SIGN PANEL ASSEMBLY (INCLUDES REMOVAL)
 - CTSO - COMPOSITE TEMPORARY SIGN OVERLAY (INCLUDES REMOVAL)
 - SPO(S) - SIGN PANEL OVERLAY, SPECIAL (INCLUDES REMOVAL)
 - TSPD - TEMPORARY SIGN PANEL OVERLAY (INCLUDES REMOVAL)
 - TSPA - TEMPORARY SIGN PANEL ASSEMBLY (INCLUDES REMOVAL)
 - RSPA - REMOVE SIGN PANEL ASSEMBLY
 - RELSPA - RELOCATE SIGN PANEL ASSEMBLY
 - SP - SIGN PANEL, TYPE 1, 2 OR 3 AND ASSEMBLY TYPE A OR B.
 - TC&(PSP) - SIGN INCLUDED IN MOT STANDARD FOR TRAFFIC CONTROL (PAID AS PART OF TRAFFIC CONTROL AND PROTECTION, SPECIAL)
 - TC&(PEX) - SIGN INCLUDED IN MOT STANDARD FOR TRAFFIC CONTROL AND PROTECTION (PAID AS PART OF TRAFFIC CONTROL AND PROTECTION, EXPRESSWAYS)

I:\projects\data\3573\mot\temp\sign\cell\test3a.dgn
 12/28/2004 1:59:44 PM


alfred benesch & company
 CONSULTING ENGINEERS
 205 NORTH MICHIGAN AVENUE, CHICAGO, ILLINOIS 60601

REVISIONS	
NAME	DATE

ILLINOIS DEPARTMENT OF TRANSPORTATION
 CONCEPTUAL TEMPORARY
 INFORMATION SIGNING PLAN
 CONTRACT 68201
 STAGE 3A
 DRAWN BY DJK
 CHECKED BY DPA
 DATE 12-28-04