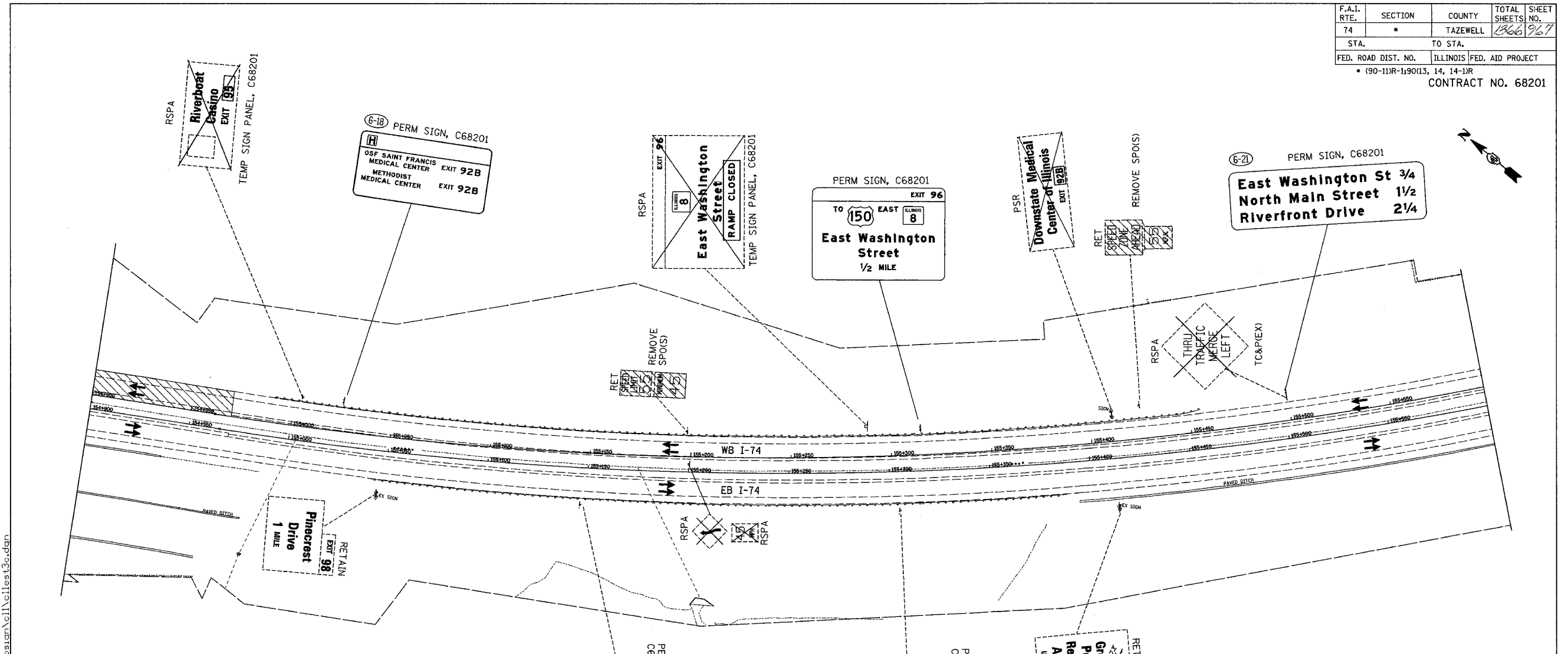


F.A.I. RTE.	SECTION	COUNTY	TOTAL SHEETS	SHEET NO.
74	*	TAZEWELL	1266	967
STA.		TO STA.		
FED. ROAD DIST. NO.		ILLINOIS FED. AID PROJECT		
		* (90-111R-1)9013, 14, 14-11R		
CONTRACT NO. 68201				



- LEGEND:
- PERM SIGN, C68197 - PERMANENT SIGN, INSTALLED IN CONTRACT NO. 68199
 - TEMP SIGN, C68193 - EXISTING TEMPORARY SIGN INSTALLED IN CONTRACT 68195
 - RET - RETAIN EXISTING SIGN
 - PSR - REMOVAL IN PERMANENT SIGNING PLANS (TIMING OF REMOVAL INDICATED IN SUB-STAGE BY X'S)
 - RTSPA - REINSTALL TEMPORARY SIGN PANEL ASSEMBLY (INCLUDES REMOVAL)
 - CTSO - COMPOSITE TEMPORARY SIGN OVERLAY (INCLUDES REMOVAL)
 - SPO(S) - SIGN PANEL OVERLAY, SPECIAL (INCLUDES REMOVAL)
 - TSPO - TEMPORARY SIGN PANEL OVERLAY (INCLUDES REMOVAL)
 - TSPA - TEMPORARY SIGN PANEL ASSEMBLY (INCLUDES REMOVAL)
 - RSPA - REMOVE SIGN PANEL ASSEMBLY
 - RELSPA - RELOCATE SIGN PANEL ASSEMBLY
 - SP - SIGN PANEL, TYPE 1, 2 OR 3 AND ASSEMBLY TYPE A OR B.
 - TC&P(SP) - SIGN INCLUDED IN MOT STANDARD FOR TRAFFIC CONTROL (PAID AS PART OF TRAFFIC CONTROL AND PROTECTION, SPECIAL)
 - TC&P(EX) - SIGN INCLUDED IN MOT STANDARD FOR TRAFFIC CONTROL AND PROTECTION (PAID AS PART OF TRAFFIC CONTROL AND PROTECTION, EXPRESSWAYS)

I:\pr-projects\data\3573\mot\temp\sign\cell\test3e.dgn
 12/28/2004 1:59:49 PM

REVISIONS	
NAME	DATE

ILLINOIS DEPARTMENT OF TRANSPORTATION
 CONCEPTUAL TEMPORARY
 INFORMATION SIGNING PLAN
 CONTRACT 68201
 STAGE 3C

DRAWN BY MZK
 CHECKED BY DPA

DATE 12-28-04


alfred benesch & company
 CONSULTING ENGINEERS
 205 NORTH MICHIGAN AVENUE, CHICAGO, ILLINOIS 60601