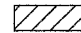

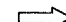
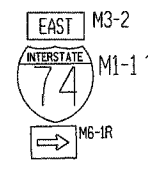
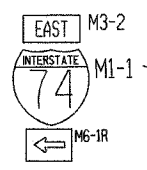
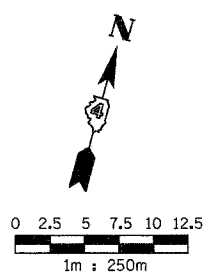


F.A.I. RTE.	SECTION	COUNTY	TOTAL SHEETS	SHEET NO.
74*	**	TAZEWELL	1366	972
STA. 99+800		TO STA. 99+960		
FED. ROAD DIST. NO.		ILLINOIS FED. AID PROJECT		
*WASHINGTON STREET		**(90-11R-2)9013,14,14-1R-1		

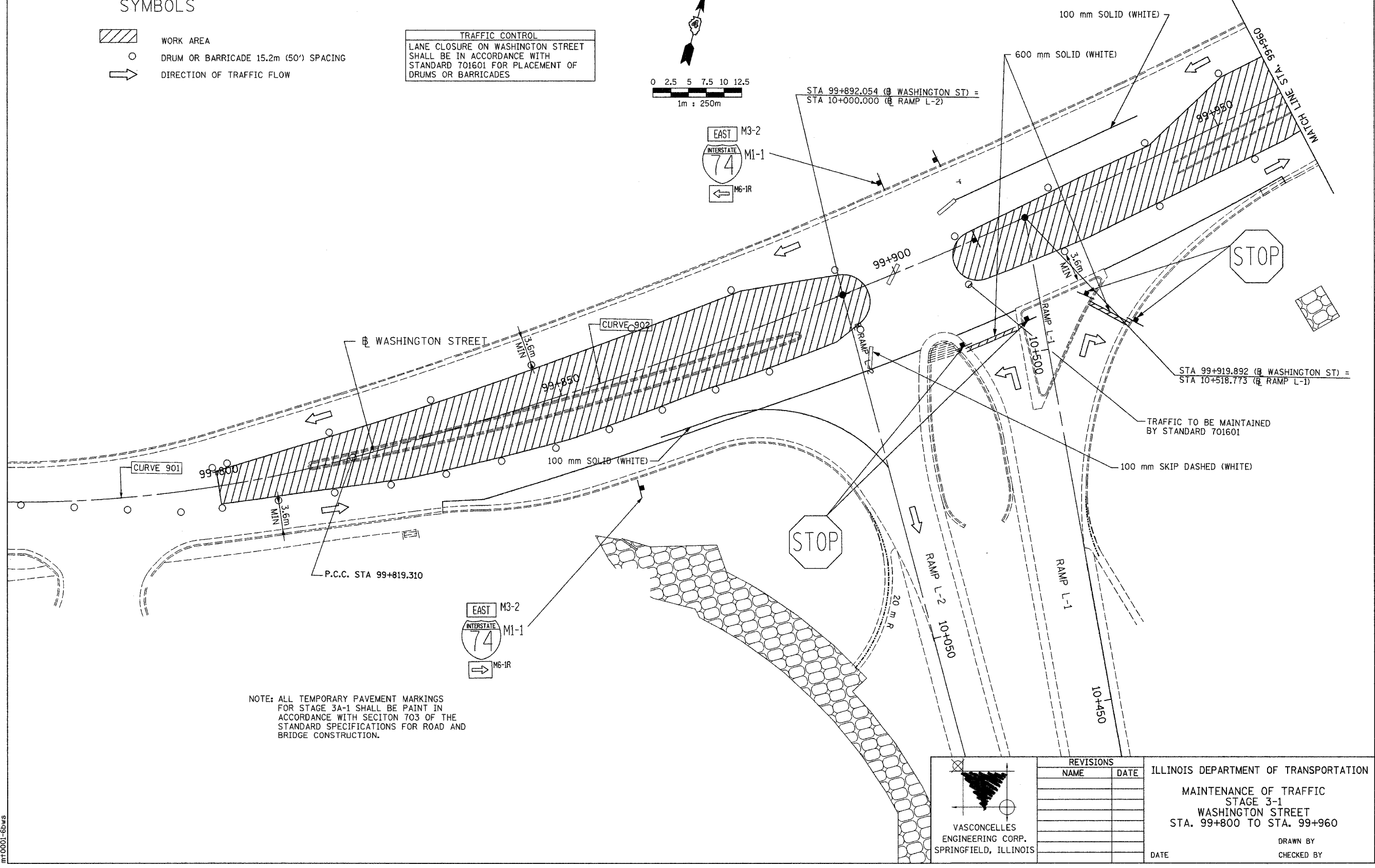
SYMBOLS

-  WORK AREA
-  DRUM OR BARRICADE 15.2m (50') SPACING
-  DIRECTION OF TRAFFIC FLOW

TRAFFIC CONTROL
 LANE CLOSURE ON WASHINGTON STREET SHALL BE IN ACCORDANCE WITH STANDARD 701601 FOR PLACEMENT OF DRUMS OR BARRICADES



NOTE: ALL TEMPORARY PAVEMENT MARKINGS FOR STAGE 3A-1 SHALL BE PAINT IN ACCORDANCE WITH SECTION 703 OF THE STANDARD SPECIFICATIONS FOR ROAD AND BRIDGE CONSTRUCTION.



VASCONCELLES
 ENGINEERING CORP.
 SPRINGFIELD, ILLINOIS

REVISIONS	
NAME	DATE

ILLINOIS DEPARTMENT OF TRANSPORTATION
 MAINTENANCE OF TRAFFIC
 STAGE 3-1
 WASHINGTON STREET
 STA. 99+800 TO STA. 99+960
 DRAWN BY
 CHECKED BY
 DATE

CONTRACT 11: PLAN SET 2 OF 3 PRE-FINAL 02/02/04 VEC 10 OF 53. JOB NO. 751-001 VASCONCELLES ENGINEERING CORP. DESIGN FIRM REGISTRATION NUMBER 184-002107

mt0001-6bws