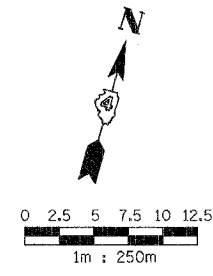


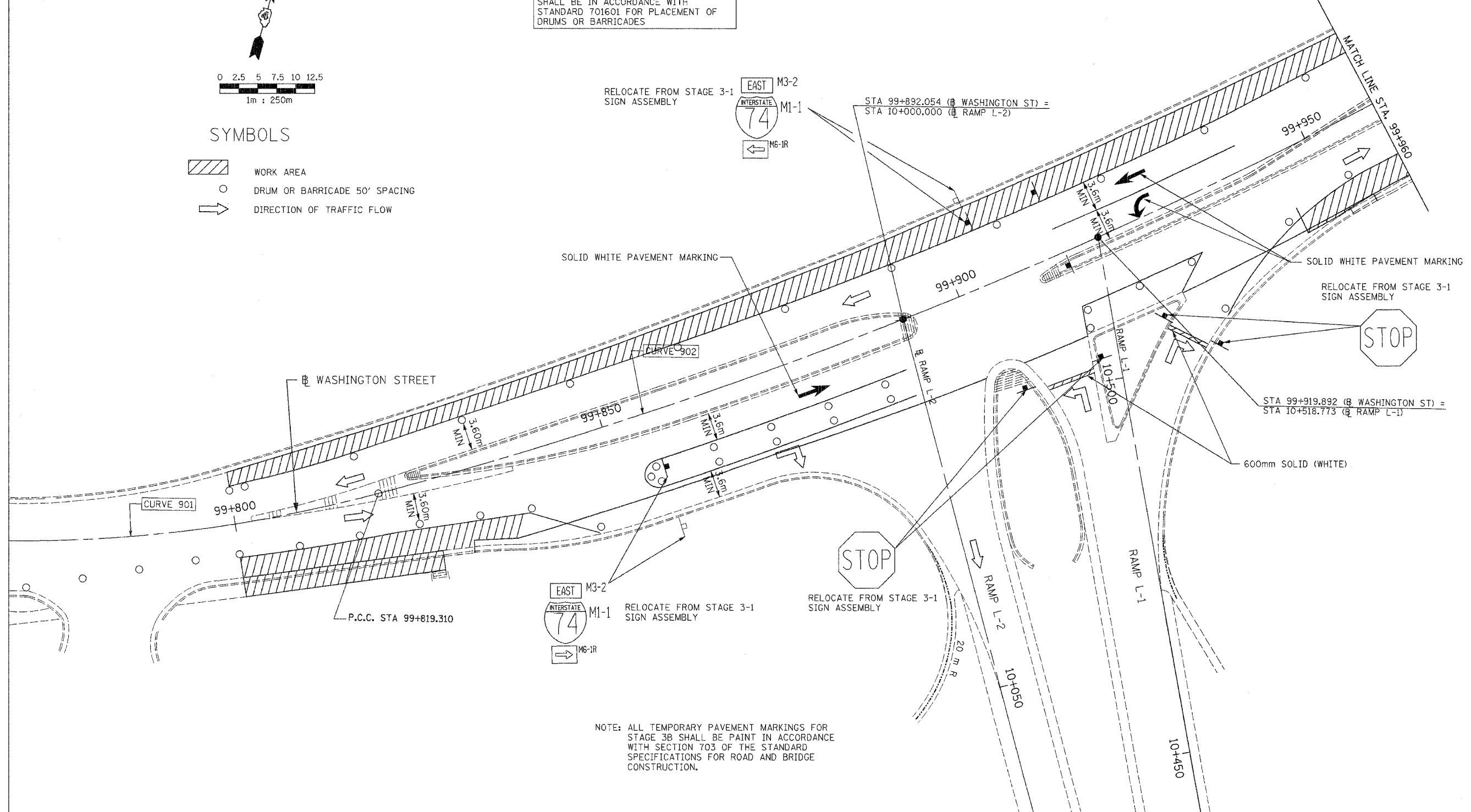
F.A.I. RTE.	SECTION	COUNTY	TOTAL SHEETS	SHEET NO.
74*	**	TAZEWELL	136	96
STA. 99+800		TO STA. 99+960		
FED. ROAD DIST. NO.		ILLINOIS FED. AID PROJECT		
*WASHINGTON STREET **90-11R-2;90(13,14,14-1)R-1				

TRAFFIC CONTROL
LANE CLOSURE ON WASHINGTON STREET SHALL BE IN ACCORDANCE WITH STANDARD 701601 FOR PLACEMENT OF DRUMS OR BARRICADES



SYMBOLS

- WORK AREA
- DRUM OR BARRICADE 50' SPACING
- DIRECTION OF TRAFFIC FLOW



NOTE: ALL TEMPORARY PAVEMENT MARKINGS FOR STAGE 3B SHALL BE PAINT IN ACCORDANCE WITH SECTION 703 OF THE STANDARD SPECIFICATIONS FOR ROAD AND BRIDGE CONSTRUCTION.

VASCONCELLES
ENGINEERING CORP.
SPRINGFIELD, ILLINOIS

REVISIONS	
NAME	DATE

ILLINOIS DEPARTMENT OF TRANSPORTATION
MAINTENANCE OF TRAFFIC
STAGE 3-2
WASHINGTON STREET
STA. 99+800 TO STA. 99+960
DRAWN BY
CHECKED BY
DATE

CONTRACT 113 PLAN SET 2 OF 3 PRE-FINAL 02/02/04 VEC 13 OF 53. JOB NO. 751-001 VASCONCELLES ENGINEERING CORP. DESIGN FIRM REGISTRATION NUMBER 184-002107

mt0004-6bws