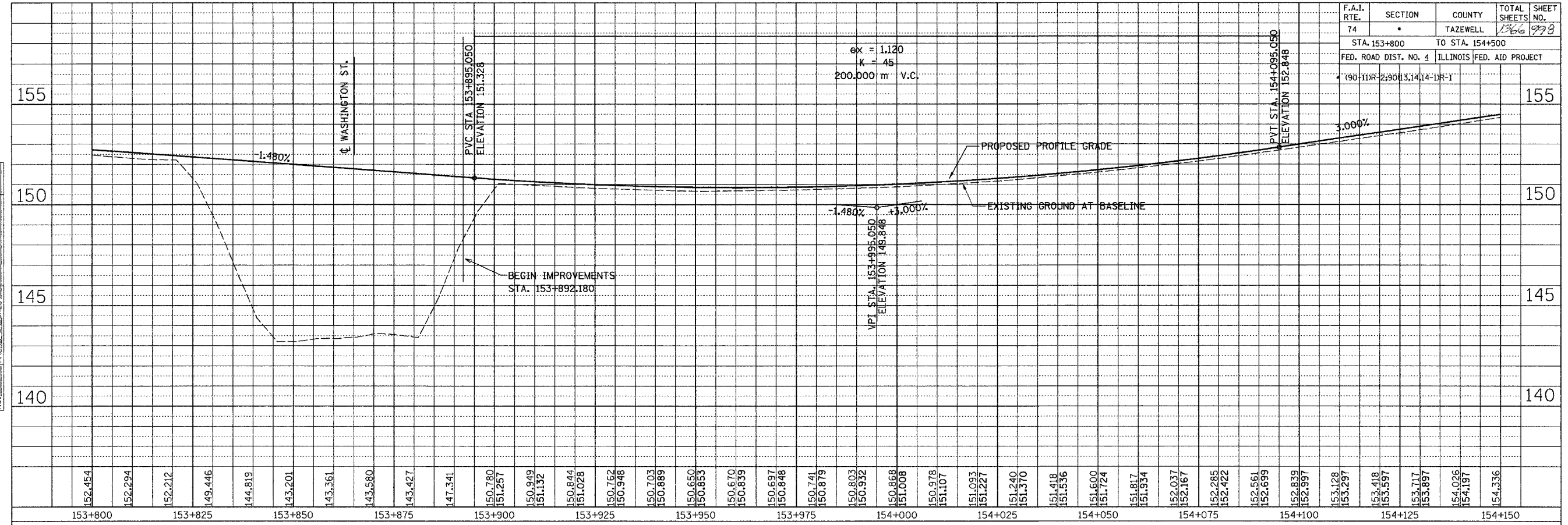
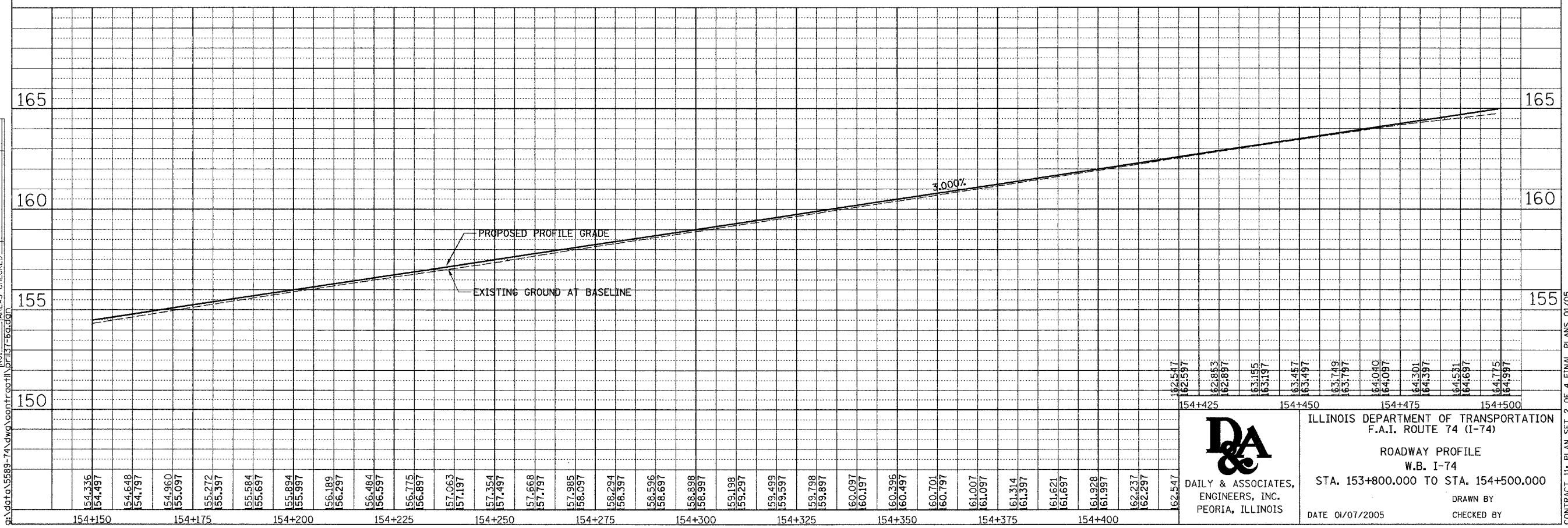


F.A.I. RTE.	SECTION	COUNTY	TOTAL SHEETS	SHEET NO.
74	*	TAZEWELL	1266	998
STA. 153+800		TO STA. 154+500		
FED. ROAD DIST. NO. 4		ILLINOIS FED. AID PROJECT		
* (90-11)R-2,900(3,14)-1(R-1)				


FINAL SURVEY	SURVEYED	BY	DATE
NO.	PLOTTED		
	NOTE BOOK TEMPLATE		
	AREAS CHECKED		
	AREAS CHECKED		



ORIGINAL SURVEY	SURVEYED	BY	DATE
NO.	PLOTTED		
	NOTE BOOK TEMPLATE		
	AREAS CHECKED		
	AREAS CHECKED		



01/07/2005 02:40:30 PM
 g:\dotr\5589-74\dwg\contract\plan\153-563.dwg

 DAILY & ASSOCIATES, ENGINEERS, INC. PEORIA, ILLINOIS	ILLINOIS DEPARTMENT OF TRANSPORTATION F.A.I. ROUTE 74 (I-74) ROADWAY PROFILE W.B. I-74 STA. 153+800.000 TO STA. 154+500.000 DRAWN BY CHECKED BY
	DATE 01/07/2005

CONTRACT 11: PLAN SET 2 OF 4 FINAL PLANS 01/05