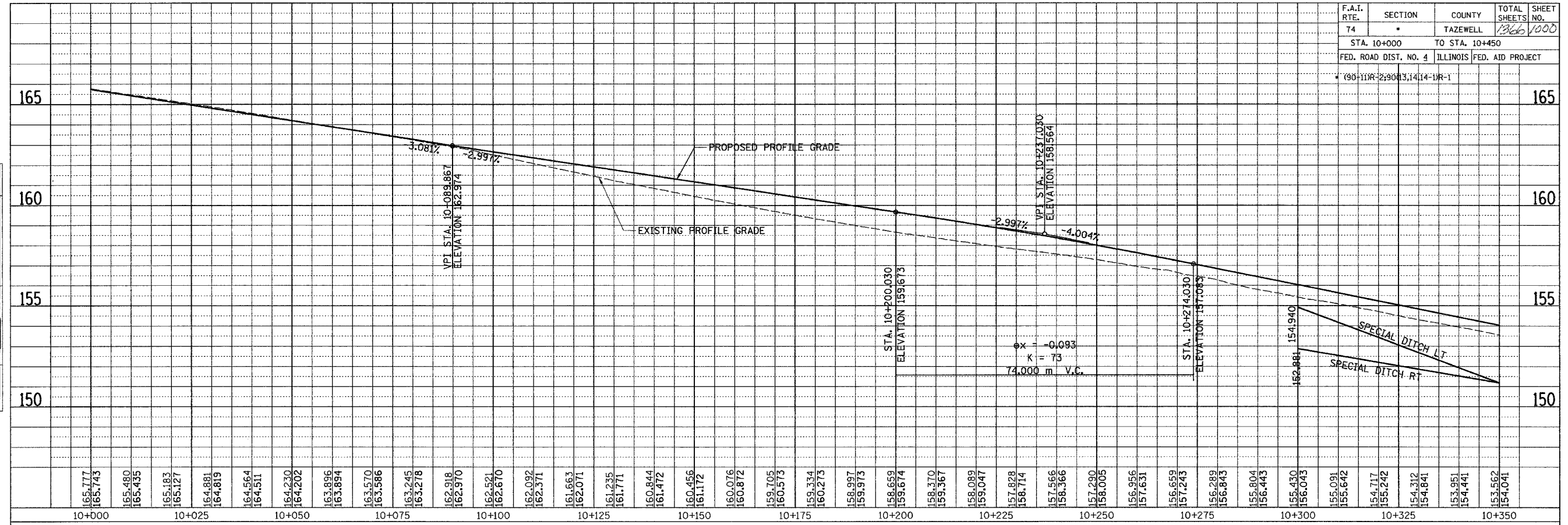


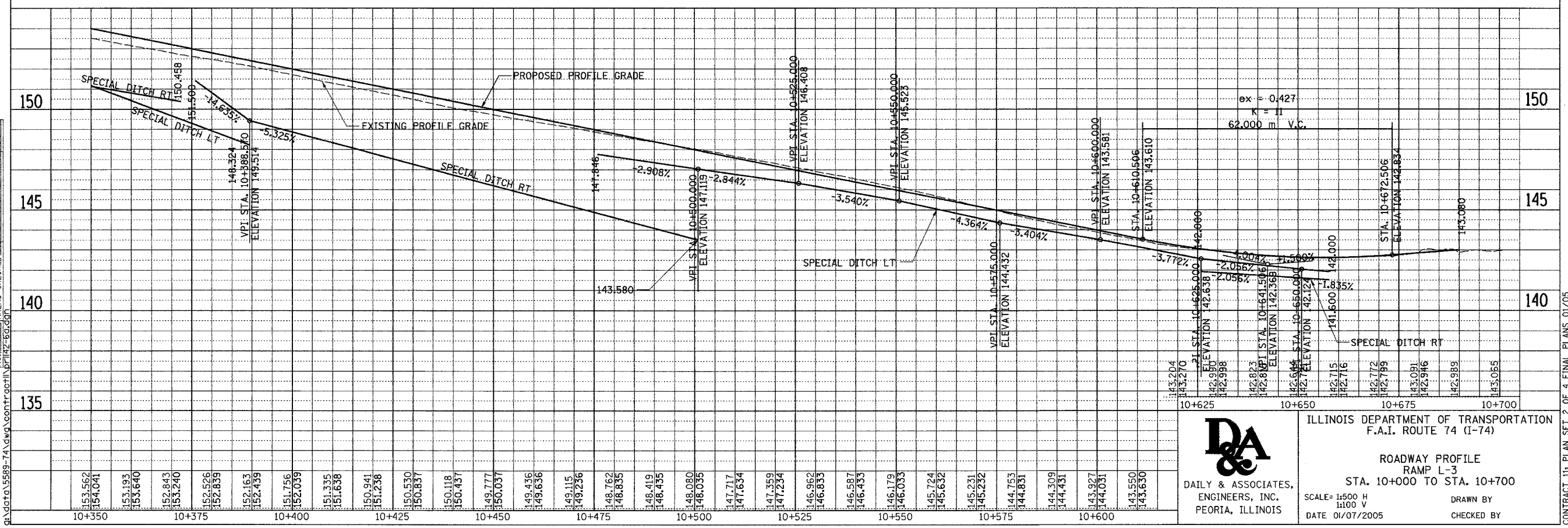
F.A.I. RTE.	SECTION	COUNTY	TOTAL SHEETS	SHEET NO.
74	*	TAZEWELL	1366	1000
STA. 10+000 TO STA. 10+450		FED. ROAD DIST. NO. 4 ILLINOIS FED. AID PROJECT		


(90-111R-2)9013,14,14-1R-1

FINAL SURVEYED	BY	DATE
SURVEY PLOTTED		
NOTE BOOK TEMPLATE		
AREAS CHECKED		
NO.		



ORIGINAL SURVEYED	BY	DATE
SURVEY PLOTTED		
NOTE BOOK TEMPLATE		
AREAS CHECKED		
NO.		





**D&A**  
DAILY & ASSOCIATES,  
ENGINEERS, INC.  
PEORIA, ILLINOIS

ILLINOIS DEPARTMENT OF TRANSPORTATION  
F.A.I. ROUTE 74 (I-74)

**ROADWAY PROFILE**  
RAMP L-3  
STA. 10+000 TO STA. 10+700

SCALE= 1:500 H  
1:100 V  
DATE 01/07/2005

DRAWN BY  
CHECKED BY

01/07/2005 02:40:31 PM  
Q:\vdot\15589-74\dwg\contr\cort\142-60101

CONTRACT 11: PLAN SET 2 OF 4 FINAL PLANS 01/05