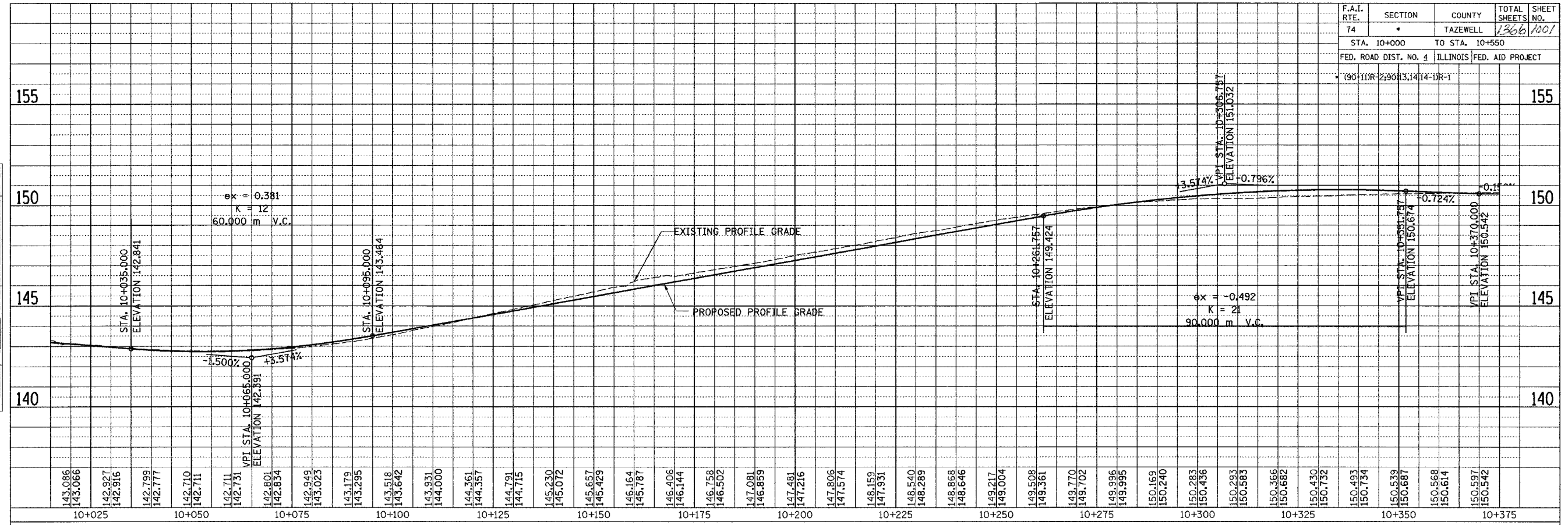
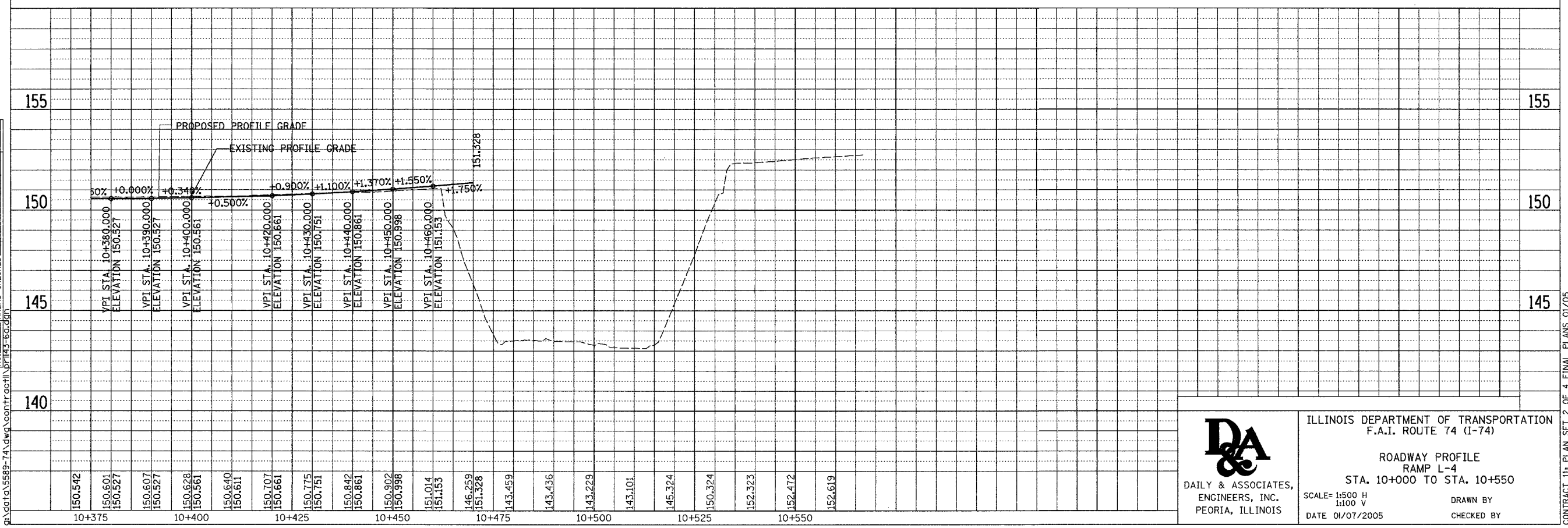


| | | | | |
|-------------------------------|---------|---------------------------|--------------|-----------|
| F.A.I. RT. | SECTION | COUNTY | TOTAL SHEETS | SHEET NO. |
| 74 | * | TAZEWELL | 1306 | 1001 |
| STA. 10+000 | | TO STA. 10+550 | | |
| FED. ROAD DIST. NO. 4 | | ILLINOIS FED. AID PROJECT | | |
| * (90-111R-2) 9013.14 14-1R-1 | | | | |


| | | |
|----------------------------------|----|------|
| FINAL SURVEYED SURVEY PLOTTED | BY | DATE |
| NOTE BOOK TEMPLATE AREAS CHECKED | | |
| NO. | | |



| | | |
|----------------------------------|----|------|
| ORIGINAL SURVEYED SURVEY PLOTTED | BY | DATE |
| NOTE BOOK TEMPLATE AREAS CHECKED | | |
| NO. | | |



01/07/2005 02:40:31 PM
 q:\data\5589-74\dwg\contr\c04h\p143-601.dwg



DAILY & ASSOCIATES, ENGINEERS, INC.
 PEORIA, ILLINOIS

ILLINOIS DEPARTMENT OF TRANSPORTATION
 F.A.I. ROUTE 74 (I-74)

ROADWAY PROFILE
 RAMP L-4
 STA. 10+000 TO STA. 10+550

SCALE: 1:500 H
 1:100 V
 DATE 01/07/2005

DRAWN BY
 CHECKED BY

CONTRACT 11: PLAN SET 2 OF 4 FINAL PLANS 01/05