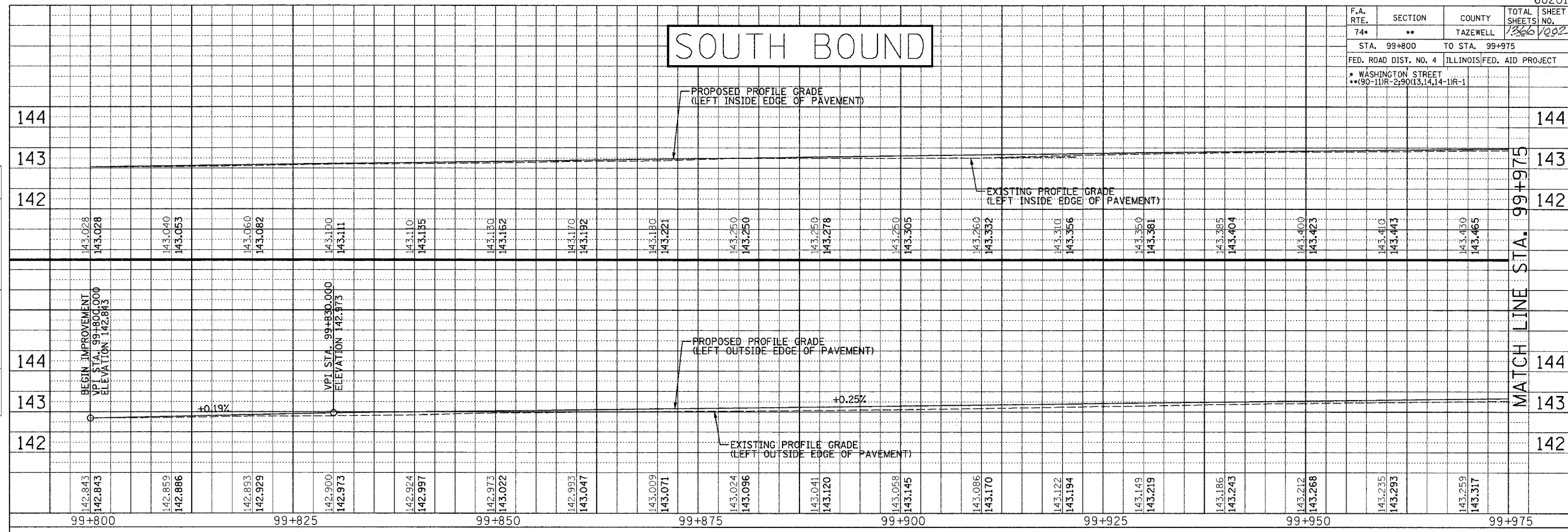
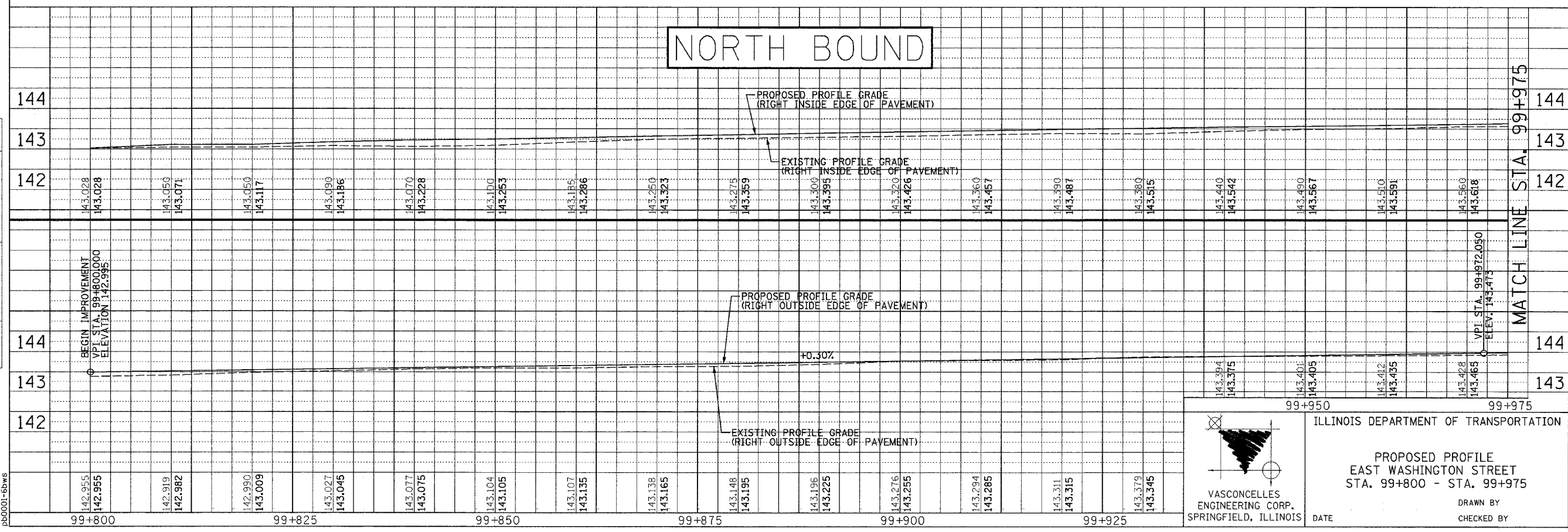


F.A. RTE.	SECTION	COUNTY	TOTAL SHEETS	SHEET NO.
74*	**	TAZEWELL	1266	1002
STA. 99+800		TO STA. 99+975		
FED. ROAD DIST. NO. 4 ILLINOIS FED. AID PROJECT				
* WASHINGTON STREET ** 90-1DR-2, 90(13,14,14-1)R-1				

SOUTH BOUND



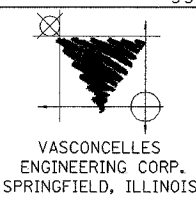
NORTH BOUND



SCALE
H 1: 250
V 1: 50

ORIGINAL SURVEYED	BY	DATE
SURVEY PLOTTED		
NOTE BOOK TEMPLATE		
AREAS CHECKED		
NO.		

FINAL SURVEYED	BY	DATE
SURVEY PLOTTED		
NOTE BOOK TEMPLATE		
AREAS CHECKED		
NO.		



ILLINOIS DEPARTMENT OF TRANSPORTATION

PROPOSED PROFILE
EAST WASHINGTON STREET
STA. 99+800 - STA. 99+975

DRAWN BY
CHECKED BY

DATE