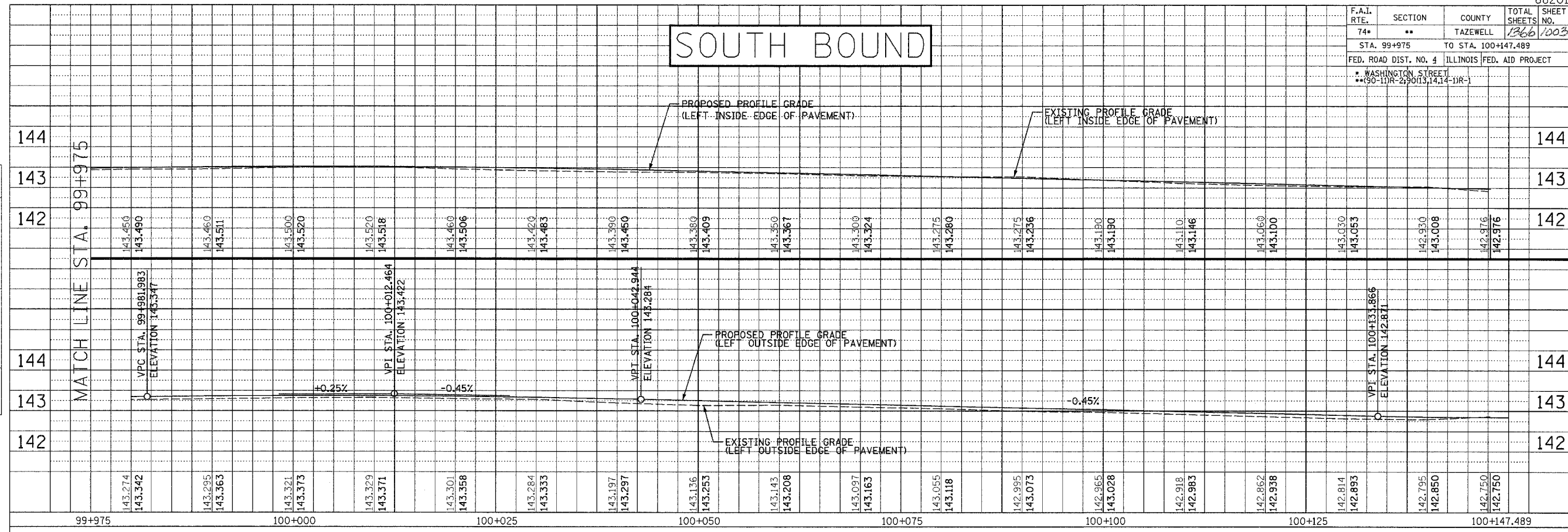
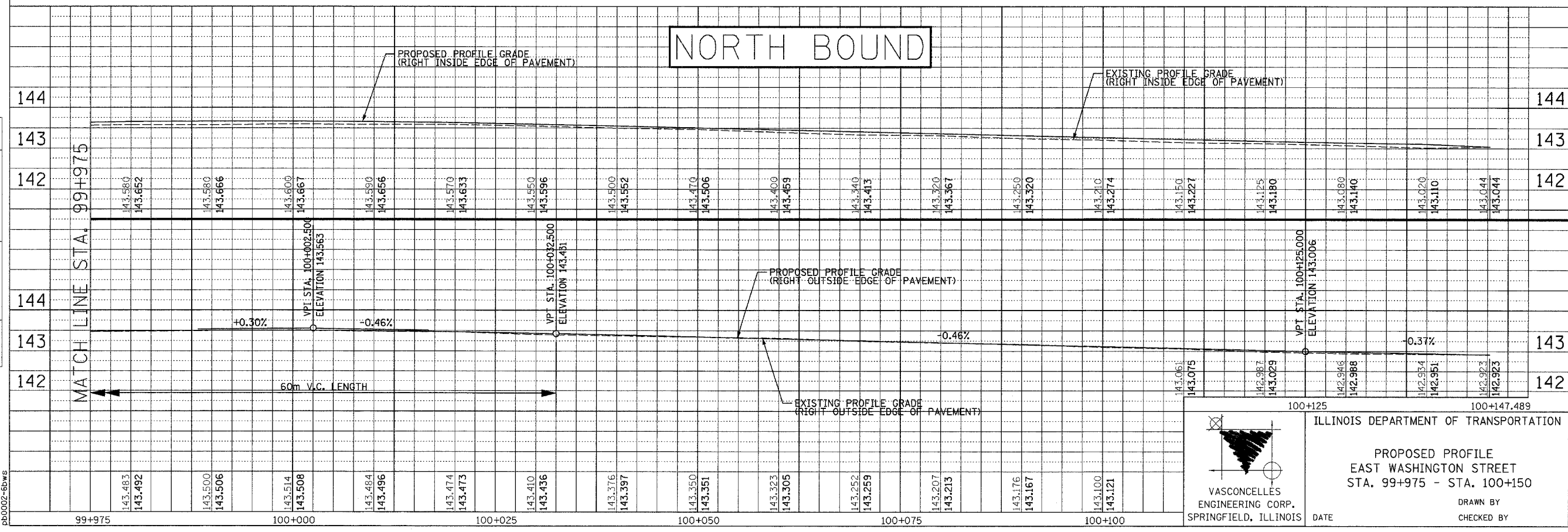


F.A.I. RTE.	SECTION	COUNTY	TOTAL SHEETS	SHEET NO.
74*	**	TAZEWELL	1366	1003
STA. 99+975		TO STA. 100+147.489		
FED. ROAD DIST. NO. 4 ILLINOIS FED. AID PROJECT				
* WASHINGTON STREET ** (90-11)R-290(13,14,14-1R-1)				

SOUTH BOUND



NORTH BOUND

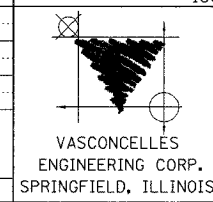


FINAL SURVEYED	BY	DATE
SURVEY PLOTTED		
NOTE BOOK TEMPLATE		
AREAS CHECKED		
NO.		

ORIGINAL SURVEYED	BY	DATE
SURVEY PLOTTED		
NOTE BOOK TEMPLATE		
AREAS CHECKED		
NO.		

SCALE
H 1: 250
V 1: 50

pb0002-6bws



ILLINOIS DEPARTMENT OF TRANSPORTATION
PROPOSED PROFILE
EAST WASHINGTON STREET
STA. 99+975 - STA. 100+150
DRAWN BY
CHECKED BY
DATE