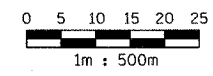
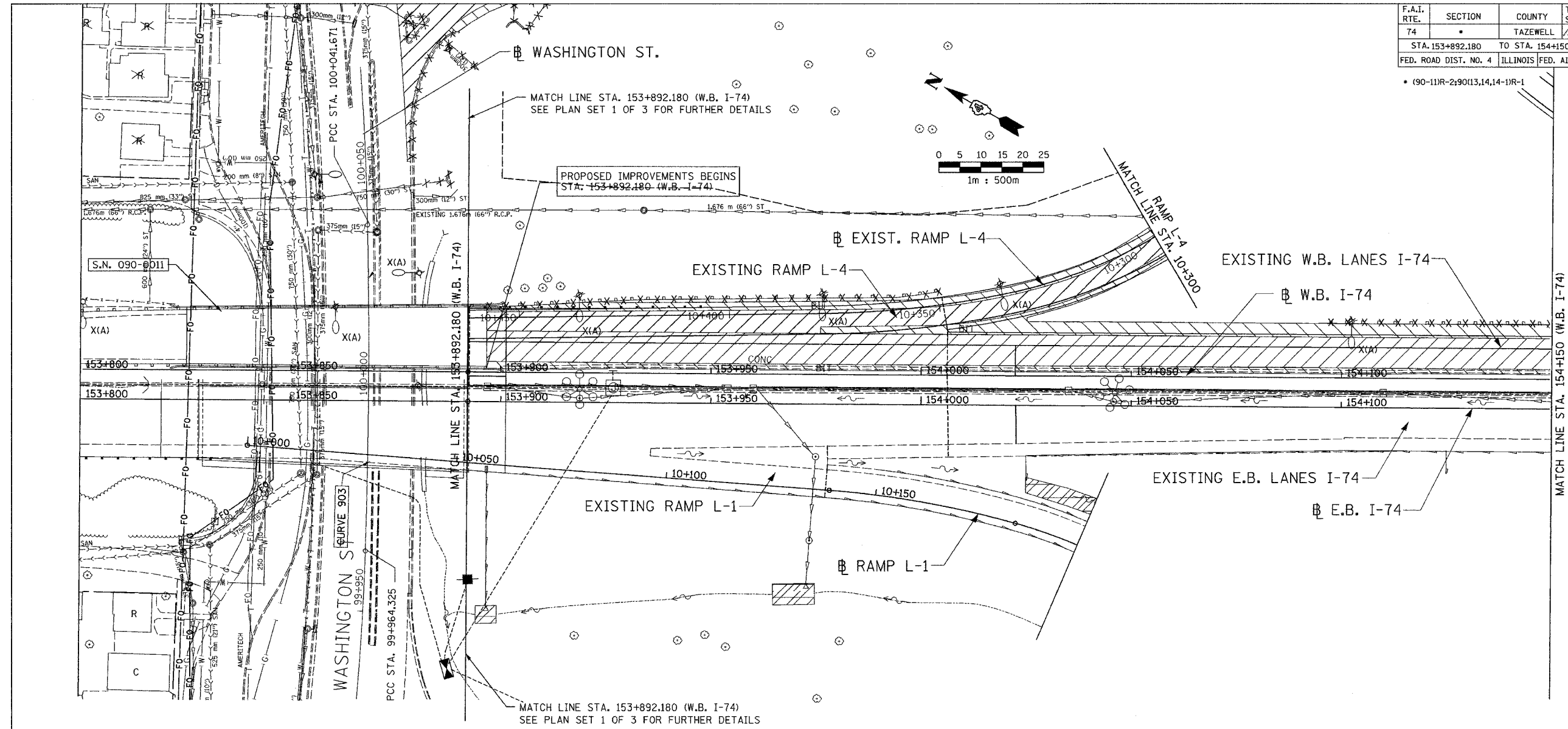


F.A.I. RTE.	SECTION	COUNTY	TOTAL SHEETS NO.	SHEET NO.
74		TAZEWELL	1366	1004
STA. 153+892.180 TO STA. 154+150		ILLINOIS FED. AID PROJECT		

* 190-111R-2; 9013, 14, 14-11R-1



EXISTING		LEGEND	
	LIGHT POLE TO BE REMOVED (BY OTHERS)		STRUCTURE TO BE REMOVED
	CATCH BASIN		ITEM TO BE ABANDONED
	INLET		ITEM TO BE RELOCATED
	MANHOLE		STORM SEWER REMOVAL
	SAG		COMBINATION SEWER REMOVAL
	SUMMIT		PAVEMENT REMOVAL
	DITCH		SHOULDER REMOVAL
	SWALE		GUARDRAIL REMOVAL
	PIPE UNDERDRAIN		PAVED DITCH REMOVAL
	SANITARY SEWER (LOCATION OF RECORD)		RIGHT-OF-WAY
	STORM SEWER		CONSTRUCTION LIMITS
	COMBINATION SEWER		
	CULVERT		
	CONCRETE HEADWALL		
	FLOW DIRECTION		
	GAS (LOCATION OF RECORD)		
	TELEPHONE (LOCATION OF RECORD)		
	WATER (LOCATION OF RECORD)		
	DITCH		

ALL DIMENSIONS ARE IN METERS (m) EXCEPT AS NOTED

SHEET 1 OF 12

ALL STATIONS INDICATED ARE WESTBOUND STATIONING UNLESS OTHERWISE NOTED.

DA
DAILY & ASSOCIATES,
ENGINEERS, INC.
PEORIA, ILLINOIS

REVISIONS	
NAME	DATE

ILLINOIS DEPARTMENT OF TRANSPORTATION
EXISTING DRAINAGE & UTILITIES PLAN
F.A.I. ROUTE 74 (I-74)
STA. 153+892.180 TO STA. 154+150
DRAWN BY
CHECKED BY
DATE 01/07/2005

01/07/2005 02:40:34 PM
G:\data\5589-74\dwg\contract\11\du168-6g.dwg

CONTRACT 11: PLAN SET 2 OF 4 FINAL PLANS 01/05