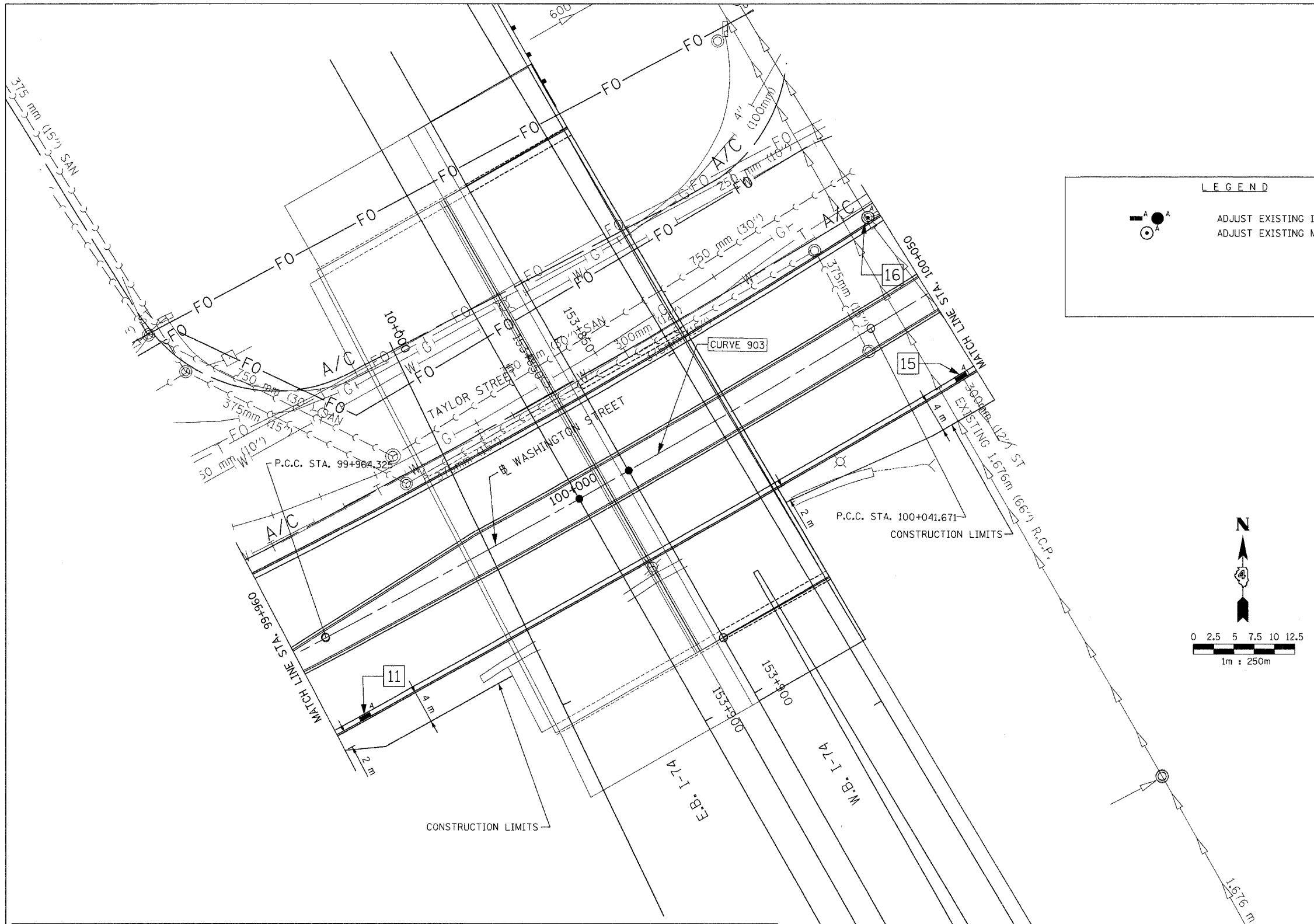
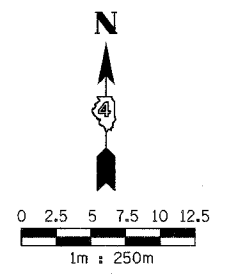


F.A.I. RTE.	SECTION	COUNTY	TOTAL SHEETS	SHEET NO.
74*	**	TAZEWELL	1366	1019
STA. 99+960		TO STA. 100+050		
FED. ROAD DIST. NO.		ILLINOIS FED. AID PROJECT		
*WASHINGTON STREET				
**190-111R-2;90(13,14,14-11R-1				

**LEGEND**

ADJUST EXISTING INLET  
 ADJUST EXISTING MANHOLE



**STORM SEWER SCHEDULE**

NUMBER	LOCATION		TYPE	FRAME AND LID/GRATE		INVERT			COMMENTS	
	STATION	OFFSET		TYPE	RIM ELEVATION	INSIDE BASE	1	2		3
11	99+964.036	10.534m RT.	INLET TO BE ADJUSTED	T3 F&G	143.447	N/A	N/A	N/A	N/A	
15	100+048.040	10.568m RT.	INLET TO BE ADJUSTED	T3 F&G	143.474	N/A	N/A	N/A	N/A	
16	100+048.532	11.850m LT.	MANHOLE TO BE ADJUSTED	EXISTING	143.373	N/A	N/A	N/A	N/A	

VASCONCELLES  
 ENGINEERING CORP.  
 SPRINGFIELD, ILLINOIS

REVISIONS	
NAME	DATE

ILLINOIS DEPARTMENT OF TRANSPORTATION  
 PROPOSED DRAINAGE & UTILITY PLAN  
 WASHINGTON STREET  
 STA. 99+960 TO STA. 100+050  
 DRAWN BY \_\_\_\_\_  
 CHECKED BY \_\_\_\_\_  
 DATE \_\_\_\_\_