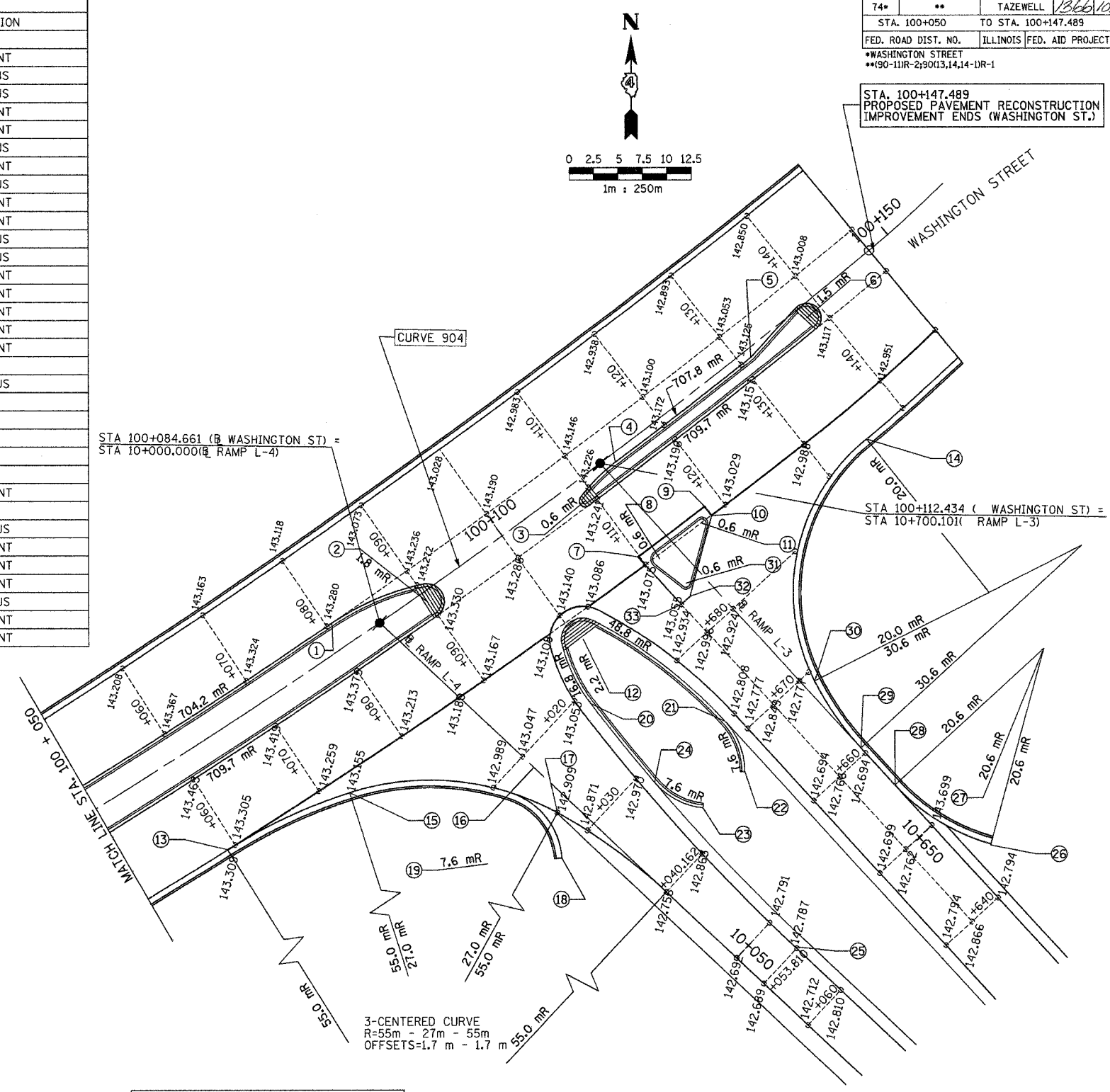


PT #	DESC.	CONSTRUCTION POINT SCHEDULE						DESCRIPTION
		REFERENCED BASELINE						
		WASHINGTON ST.		RAMP L - 3		RAMP L - 4		
STATION	OFFSET	STATION	OFFSET	STATION	OFFSET			
1		+080.63	2.75 m LT					EDGE OF PAVEMENT
2		+089.87	0.95 m RT					CENTER OF RADIUS
3		+108.90	2.15 m RT					CENTER OF RADIUS
4		+113.72	0.85 m RT					EDGE OF PAVEMENT
5		+131.20	0.85 m RT					EDGE OF PAVEMENT
6		+138.18	1.26 m RT					CENTER OF RADIUS
7		+109.84	9.95 m RT					EDGE OF PAVEMENT
8		+111.48	11.45 m RT					CENTER OF RADIUS
9		+118.25	9.95 m RT					EDGE OF PAVEMENT
10		+118.25	11.15 m RT					EDGE OF PAVEMENT
11		+117.03	11.15 m RT					CENTER OF RADIUS
12		+100.48	13.40 m RT					CENTER OF RADIUS
13		+059.10	10.66 m RT					EDGE OF PAVEMENT
14		+134.22	14.74 m RT					EDGE OF PAVEMENT
15				+009.62	14.74 m RT			EDGE OF PAVEMENT
16				+021.58	3.51 m RT			EDGE OF PAVEMENT
17				+026.51	1.72 m RT			EDGE OF PAVEMENT
18				+029.99	4.76 m RT			EDGE OF GUTTER
19				+024.86	10.37 m RT			CENTER OF RADIUS
20				+021.40	8.72 m LT			FACE OF CURB
21				+672.07	8.40 m LT			FACE OF CURB
22				+666.93	10.40 m LT			EDGE OF GUTTER
23				+037.03	8.80 m LT			EDGE OF GUTTER
24				+031.62	7.32 m LT			FACE OF CURB
25				+053.58	6.10 m LT			EDGE OF PAVEMENT
26			+644.55	3.18 m RT				EDGE OF GUTTER
27			+655.56	20.60 m RT				CENTER OF RADIUS
28			+655.56	0				EDGE OF PAVEMENT
29			+660.69	0				EDGE OF PAVEMENT
30			+668.94	1.13 m RT				EDGE OF PAVEMENT
31			+685.18	1.80 m LT				CENTER OF RADIUS
32			+683.92	2.40 m LT				EDGE OF PAVEMENT
33			+683.92	3.60 m LT				EDGE OF PAVEMENT

F.A.I. RTE.	SECTION	COUNTY	TOTAL SHEETS	SHEET NO.
74*	**	TAZEWELL	1366	1030
STA. 100+050		TO STA. 100+147.489		
FED. ROAD DIST. NO.		ILLINOIS FED. AID PROJECT		
*WASHINGTON STREET				
**90-11R-29013,14,14-1R-1				

STA. 100+147.489  
PROPOSED PAVEMENT RECONSTRUCTION  
IMPROVEMENT ENDS (WASHINGTON ST.)

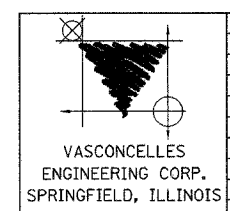


STA 100+084.661 (B WASHINGTON ST) =  
STA 10+000.000 (B RAMP L-4)

STA 100+112.434 ( WASHINGTON ST) =  
STA 10+700.101 ( RAMP L-3)

RAMP L-3 VERTICAL CURVE INFORMATION			
V.P.I. STA= 10+641.506	SAG= 10+655.613	ELEV= 142.347	ELEV= 142.685
V.P.C.= 10+610.506	V.C.L.= 62.000m	ELEV= 143.590	
V.P.T.= 10+672.506		ELEV= 142.812	
		BEGIN -4.009%	
		END +1.50%	

RAMP L-4 VERTICAL CURVE INFORMATION			
V.P.I. STA= 10+065.000	SAG= 10+052.710	ELEV= 142.372	ELEV= 142.689
V.P.C.= 10+035.000	V.C.L.= 60.000m	ELEV= 142.822	
V.P.T.= 10+095.000		ELEV= 143.447	
		BEGIN -1.50%	
		END +3.582%	



REVISIONS	
NAME	DATE

ILLINOIS DEPARTMENT OF TRANSPORTATION  
  
INTERSECTION DETAIL  
RAMPS L-3 AND L-4  
WASHINGTON STREET  
STA. 100+050 TO STA. 100+147.489  
  
DRAWN BY  
CHECKED BY  
DATE

CONTRACT 11: PLAN SET 2 OF 3 PRE-FINAL 02/02/04 VEC 32 OF 53. JOB NO. 751-001 VASCONCELLES ENGINEERING CORP. DESIGN FIRM REGISTRATION NUMBER 184-002107

100002-68201