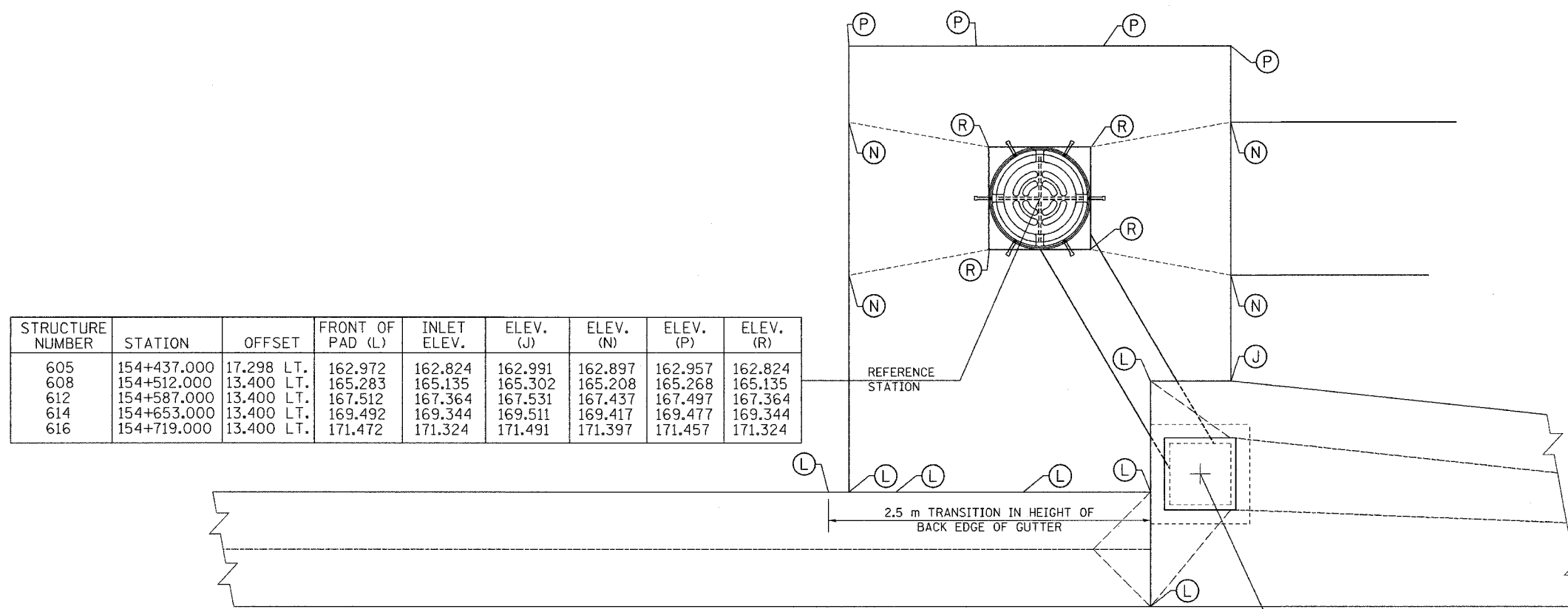


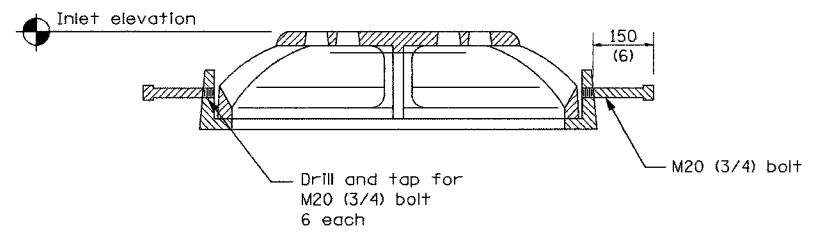
F.A.I. RTE.	SECTION	COUNTY	TOTAL SHEETS	SHEET NO.
74	*	TAZEWELL	1366	1052
STA.		TO STA.		
FED. ROAD DIST. NO. 4		ILLINOIS FED. AID PROJECT		

* 190-111R-2:90(13,14,14-1)R-1



STRUCTURE NUMBER	STATION	OFFSET	FRONT OF PAD (L)	INLET ELEV.	ELEV. (J)	ELEV. (N)	ELEV. (P)	ELEV. (R)
605	154+437.000	17.298 LT.	162.972	162.824	162.991	162.897	162.957	162.824
608	154+512.000	13.400 LT.	165.283	165.135	165.302	165.208	165.268	165.135
612	154+587.000	13.400 LT.	167.512	167.364	167.531	167.437	167.497	167.364
614	154+653.000	13.400 LT.	169.492	169.344	169.511	169.417	169.477	169.344
616	154+719.000	13.400 LT.	171.472	171.324	171.491	171.397	171.457	171.324

STRUCTURE NUMBER	STATION **	OFFSET
606	154+438.260	15.240 LT.
609	154+513.260	11.246 LT.
613	154+588.260	11.232 LT.
615	154+654.260	11.255 LT.
617	154+720.260	11.260 LT.



INLETS, SPECIAL GRATE DETAIL
See Standard 604101

SHEET 9 OF 12

ALL STATIONS INDICATED ARE WESTBOUND STATIONING UNLESS OTHERWISE NOTED.



REVISIONS	
NAME	DATE

ILLINOIS DEPARTMENT OF TRANSPORTATION

DRAINAGE DETAIL
INLETS, SPECIAL (MODIFIED)

DATE 01/07/2005

DRAWN BY _____
CHECKED BY _____

01/07/2005 01:21:12 PM
 S:\addra\5589-14\dwg\contractor\11\dd107-6a.dgn

CONTRACT 11: PLAN SET 2 OF 4 FINAL PLANS 01/05