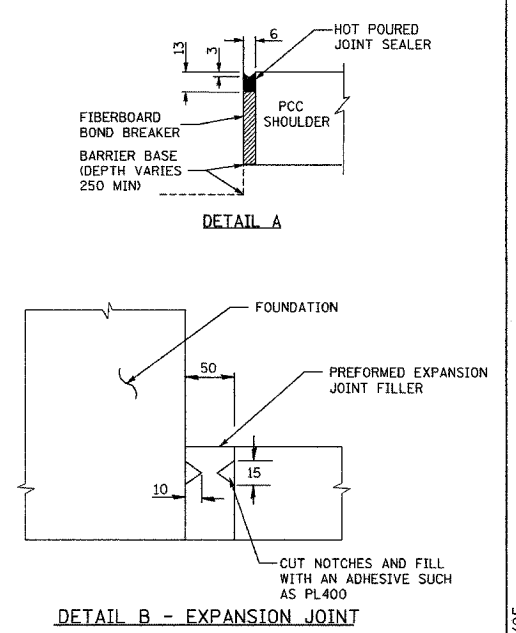
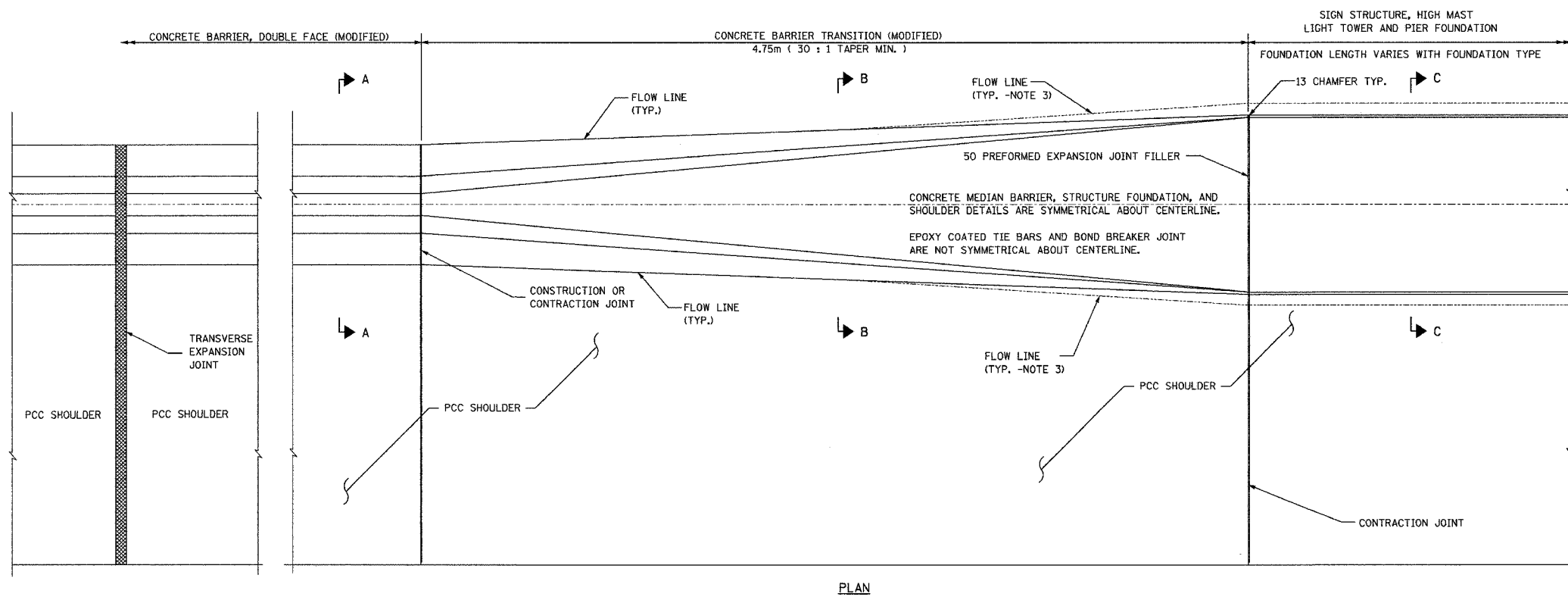
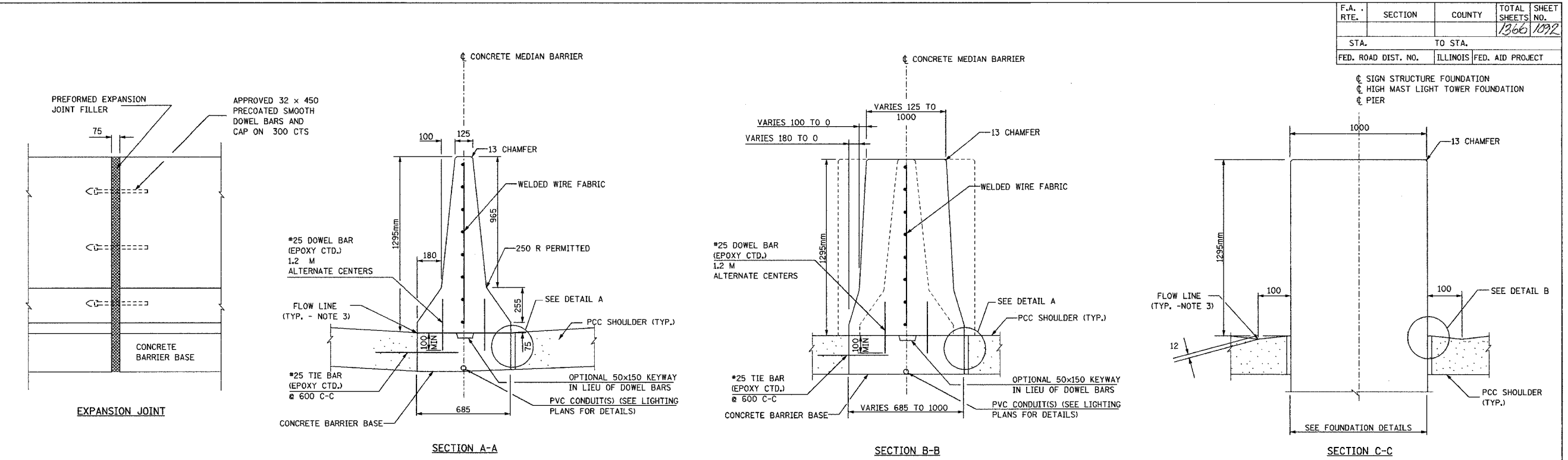


F.A. RTE.	SECTION	COUNTY	TOTAL SHEETS	SHEET NO.
			1366	1092
STA.	TO STA.			
FED. ROAD DIST. NO.	ILLINOIS FED. AID PROJECT			



NOTES:

- FOR SHOULDER AND UNDERDRAIN DETAILS SEE I-74 PROJECT STDS 483001-I74 AND 601001-I74.
- TAPER LENGTH REQUIRED FOR TRANSITION TO 1 METER WIDTH WILL BE 4.75m.
- PROPOSED DRAINAGE PROFILE IN THE VICINITY OF SAG VERTICAL CURVES AND ALONG FLAT GRADES SHALL BE CAREFULLY CONTROLLED AND FIELD ADJUSTED IF NECESSARY TO ENSURE POSITIVE DRAINAGE AND AVOID PONDING.
- A 25 RADIUS CAN BE SUBSTITUTED FOR THE 13 CHAMFER AT THE TOP OF THE BARRIER WALL.
- REINFORCING BARS AND WELDED WIRE FABRIC SHALL BE SEATED IN THE FINAL POSITION PRIOR TO THE CONCRETE OPERATIONS. BARS CANNOT BE MUCKED INTO PLACE.
- AT FOUNDATION MEDIAN TRANSITIONS, PCC SHOULDER CONTRACTION JOINTS SHOULD BE ALIGNED WITH MEDIAN BARRIER CONTRACTION JOINTS AND EXPANSION JOINTS.
- DETAILS SHOWN FOR I-74 STANDARD BARRIER, DETAILS FOR VARIABLE HEIGHT BARRIER SIMILAR.
- TRANSVERSE EXPANSION JOINT THRU THE PAVEMENT AND THE SHOULDER SHALL BE EXTENDED THRU THE CONCRETE BARRIER

REVISIONS	
NAME	DATE
FLARED BASES	9/23/02
DOWEL BAR SPACING	2/11/03
REM DIFF BARRIER	6/20/03
EXPANSION JOINT	10/7/03

ILLINOIS DEPARTMENT OF TRANSPORTATION  
 I-74 PROJECT STANDARD 637001-I74  
 CONCRETE BARRIER, DOUBLE FACE (MODIFIED) &  
 CONCRETE BARRIER TRANSITION (MODIFIED)  
 FOR SIGN STRUCTURE, HIGH MAST LIGHT TOWER,  
 AND PIER FOUNDATIONS  
 DRAWN BY  
 DATE 08/15/02 CHECKED BY

CONTRACT IN PLAN SET 3 OF 4 FINAL PLANS 1/05