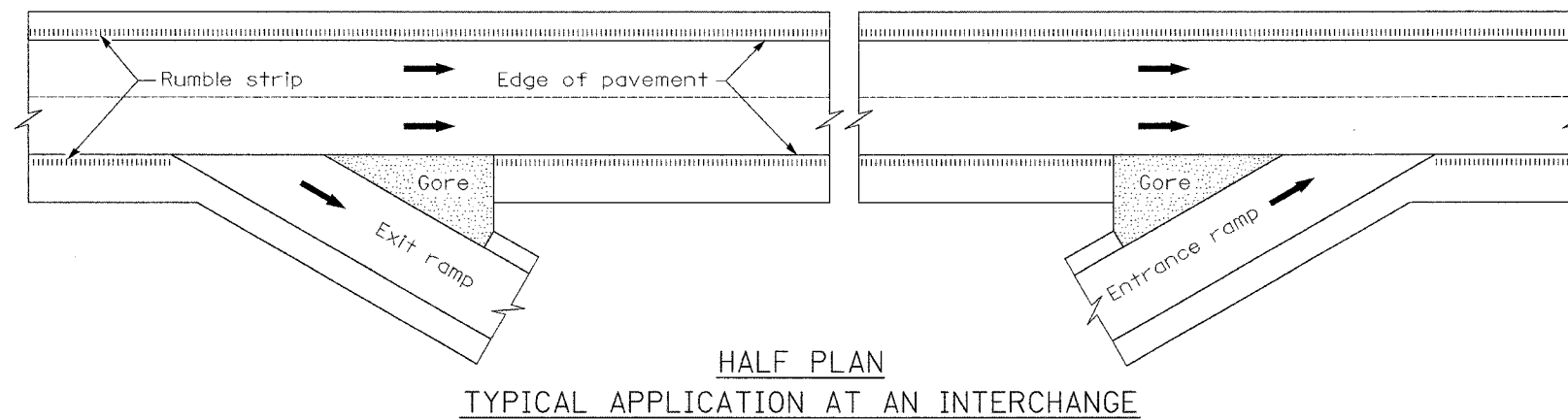
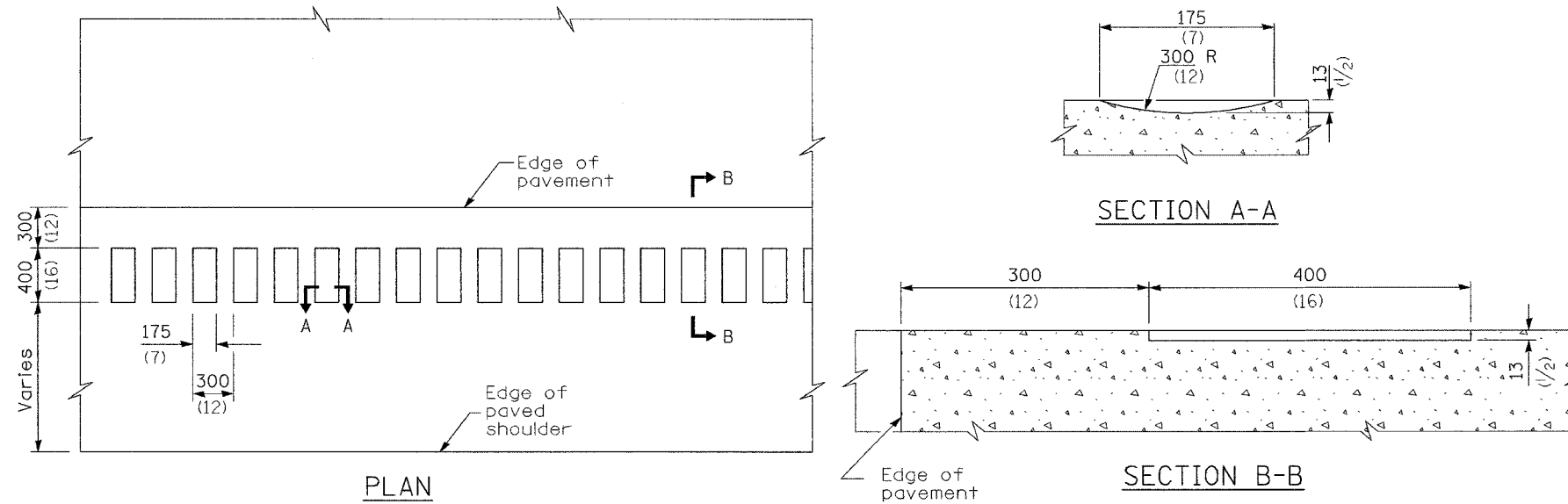


F.A. RTE.	SECTION	COUNTY	TOTAL SHEETS	SHEET NO.
			1366	1093
STA.		TO STA.		
FED. ROAD DIST. NO.		ILLINOIS FED. AID PROJECT		



**GENERAL NOTES**

On Portland cement concrete shoulders, no shoulder rumble strip shall be located closer than 150 mm (6") to a transverse joint.

Omit shoulder rumble strips across structures.

All dimensions are in millimeters (Inches) unless otherwise shown.

SHEET 13 OF 14

REVISIONS		ILLINOIS DEPARTMENT OF TRANSPORTATION
NAME	DATE	
		I-74 PROJECT STANDARD 642001-I74
		I-74 SHOULDER RUMBLE STRIPS
		DRAWN BY
		CHECKED BY
		DATE 06/10/04