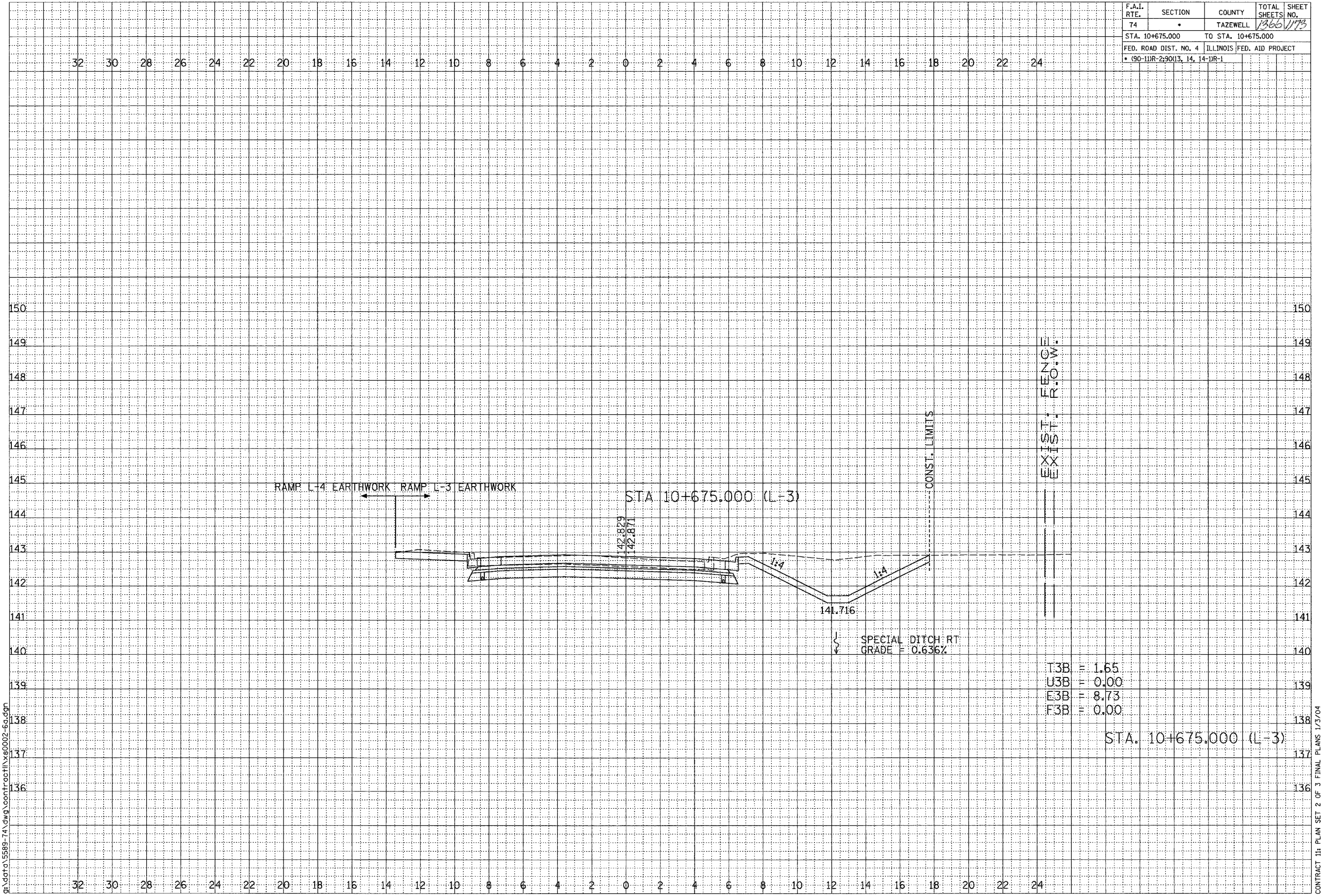


F.A.I. RTE.	SECTION	COUNTY	TOTAL SHEETS	SHEET NO.
74		TAZEWELL	1366	1173
STA. 10+675.000		TO STA. 10+675.000		
FED. ROAD DIST. NO. 4		ILLINOIS FED. AID PROJECT		
• (90-11R-2)90(13, 14, 14-1R-1)				



T3B = 1.65  
 U3B = 0.00  
 F3B = 8.73  
 F3B = 0.00

STA. 10+675.000 (L-3)

RAMP L-3  
 SHEET 12 OF 12



FINAL SURVEY	BY	DATE
SURVEYED		
PLOTTED		
NOTE BOOK		
AREAS CHECKED		

ORIGINAL SURVEY	BY	DATE
SURVEYED		
PLOTTED		
NOTE BOOK		
AREAS CHECKED		

SCALE  
 H 1: 100  
 V 1: 50

01/07/2005 09:19:56 AM  
 g:\data\5589-74\dwg\contract\1\50002-6a.dgn

CONTRACT 11: PLAN SET 2 OF 3 FINAL PLANS 1/3/04

\\sawyer\cpl\111\50002-6a.dwg 02/07/2005 09:35:05 AM