

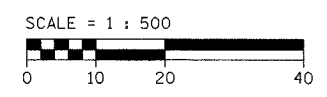
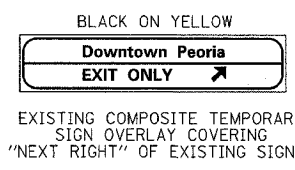
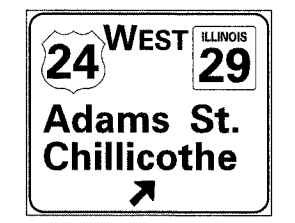
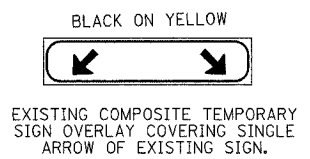
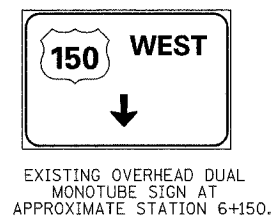
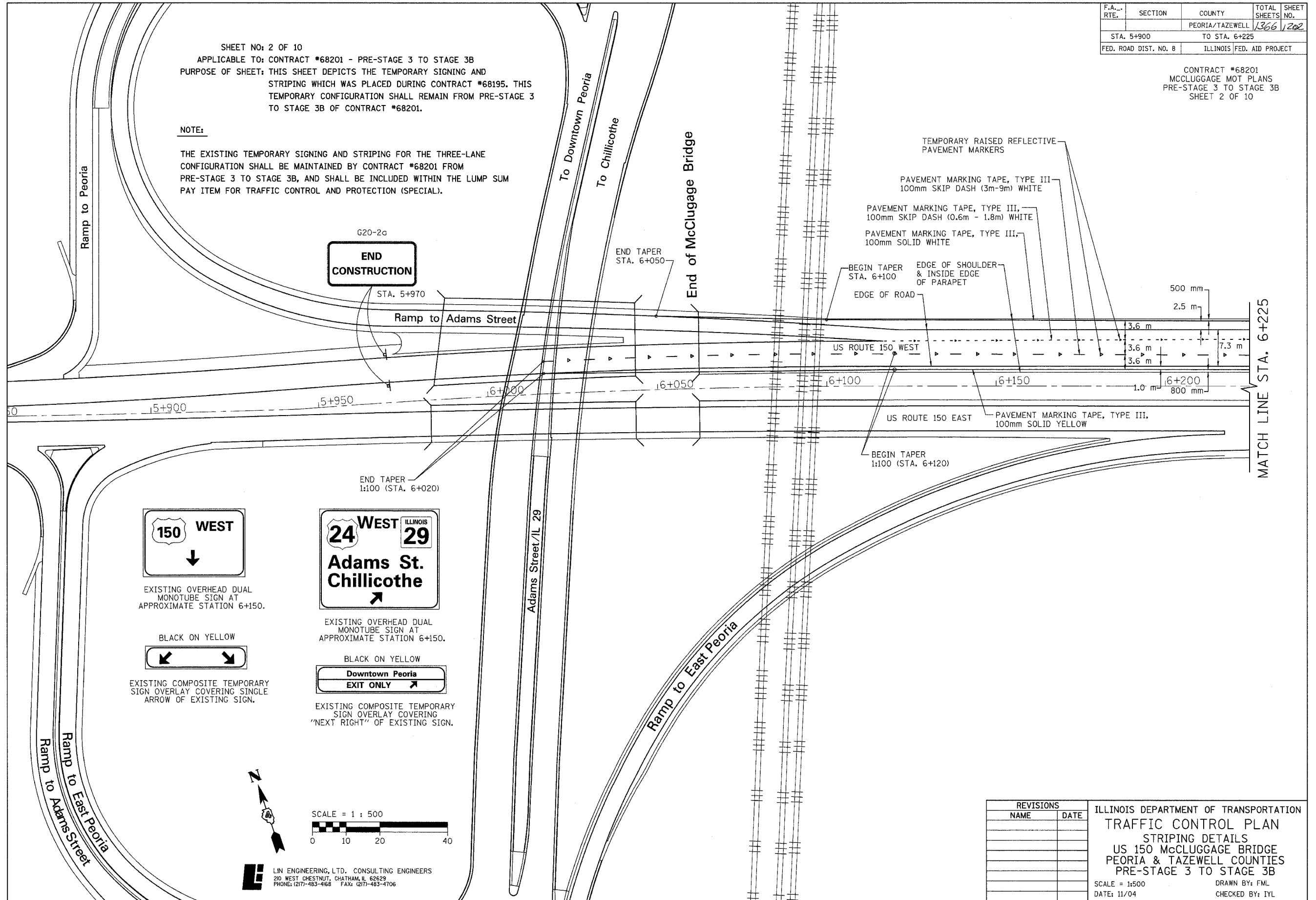
F.A. RTE.	SECTION	COUNTY	TOTAL SHEETS	SHEET NO.
		PEORIA/TAZEWELL	1366	1202
STA. 5+900		TO STA. 6+225		
FED. ROAD DIST. NO. 8		ILLINOIS FED. AID PROJECT		

CONTRACT #68201  
 MCCLUGGAGE MOT PLANS  
 PRE-STAGE 3 TO STAGE 3B  
 SHEET 2 OF 10

SHEET NO: 2 OF 10  
 APPLICABLE TO: CONTRACT #68201 - PRE-STAGE 3 TO STAGE 3B  
 PURPOSE OF SHEET: THIS SHEET DEPICTS THE TEMPORARY SIGNING AND STRIPING WHICH WAS PLACED DURING CONTRACT #68195. THIS TEMPORARY CONFIGURATION SHALL REMAIN FROM PRE-STAGE 3 TO STAGE 3B OF CONTRACT #68201.

**NOTE:**

THE EXISTING TEMPORARY SIGNING AND STRIPING FOR THE THREE-LANE CONFIGURATION SHALL BE MAINTAINED BY CONTRACT #68201 FROM PRE-STAGE 3 TO STAGE 3B, AND SHALL BE INCLUDED WITHIN THE LUMP SUM PAY ITEM FOR TRAFFIC CONTROL AND PROTECTION (SPECIAL).



**LI** LIN ENGINEERING, LTD. CONSULTING ENGINEERS  
 210 WEST CHESTNUT, CHATHAM, IL 62629  
 PHONE: (217)-483-4168 FAX: (217)-483-4706

REVISIONS	
NAME	DATE

ILLINOIS DEPARTMENT OF TRANSPORTATION  
 TRAFFIC CONTROL PLAN  
 STRIPING DETAILS  
 US 150 MCCLUGGAGE BRIDGE  
 PEORIA & TAZEWELL COUNTIES  
 PRE-STAGE 3 TO STAGE 3B  
 SCALE = 1:500 DRAWN BY: FML  
 DATE: 11/04 CHECKED BY: IYL