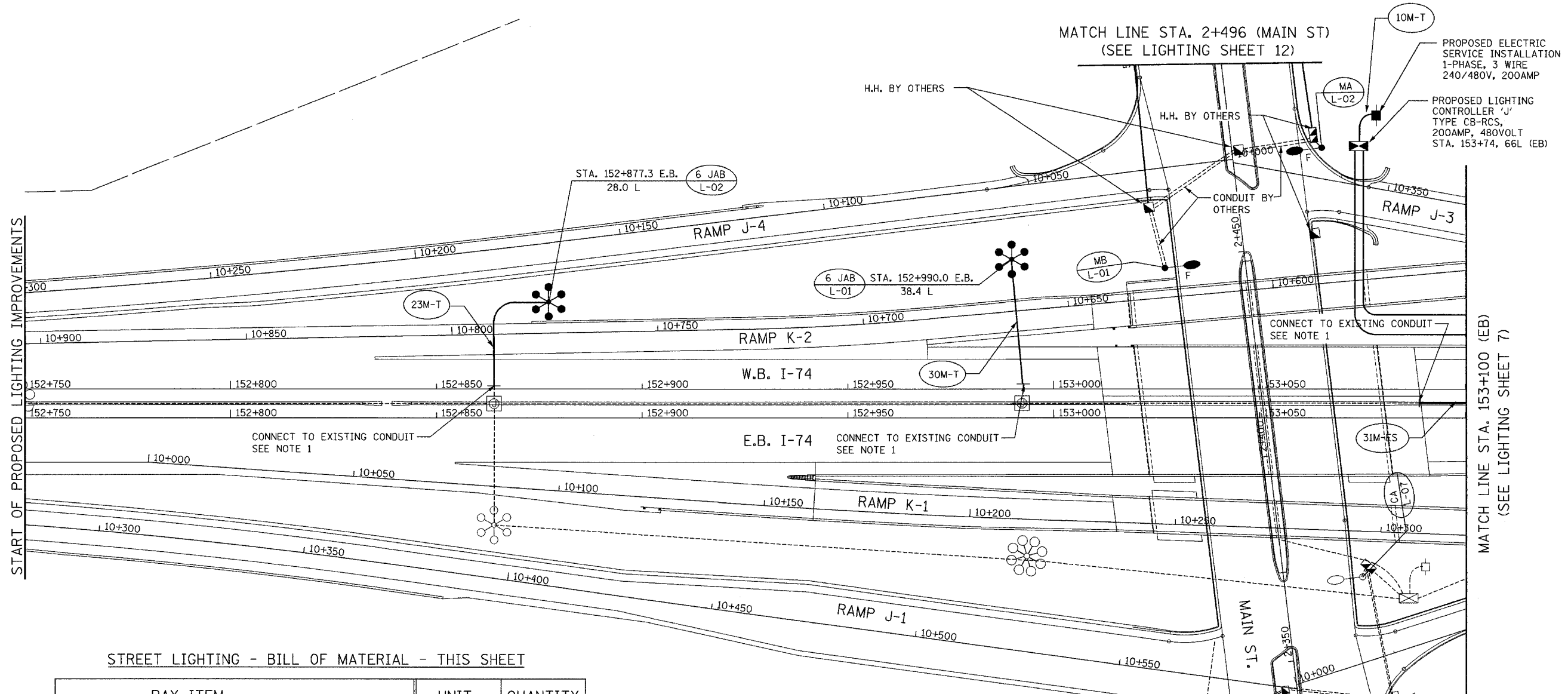


F.A.I. RTE.	SECTION	COUNTY	TOTAL SHEETS	SHEET NO.
74		TAZEWELL	1366	1216
STA. 152+750		TO STA. 153+100		
FED. ROAD DIST. NO.	ILLINOIS FED. AID PROJECT			
	• 190-11R-2, 9013, 14, 14-1R-1			
CONTRACT NO. 68201				



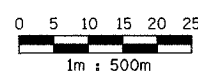
START OF PROPOSED LIGHTING IMPROVEMENTS

MATCH LINE STA. 153+100 (EB)
(SEE LIGHTING SHEET 7)

STREET LIGHTING - BILL OF MATERIAL - THIS SHEET

PAY ITEM	UNIT	QUANTITY
ELECTRIC SERVICE INSTALLATION	EACH	1
LIGHTING CONTROLLER TYPE CB-RCS 200AMP-480VOLT	EACH	1
CONDUIT IN TRENCH, 75MM DIA., PVC	METER	63.0
CONDUIT EMBEDDED IN STRUCTURE, 75mm DIA. PVC	METER	31.0
TRENCH AND BACKFILL FOR ELECTRICAL WORK	METER	63.0
LIGHT TOWER FOUNDATION	METER	15.8
HIGH MAST LUMINAIRE, (INSTALL ONLY)	EACH	12
LIGHT TOWER, INSTALL ONLY	EACH	2

NOTE 1:
USE CONDUIT COUPLING AND ADAPTER TO
CONNECT PROPOSED TO EXISTING CONDUIT.
COST IS INCLUDED IN " CONDUIT IN TRENCH,
75MM, DIA., PVC " PAY ITEM.



ab **alfred benesch & company**
CONSULTING ENGINEERS
205 NORTH MICHIGAN AVENUE, CHICAGO, ILLINOIS 60601

REVISIONS	
NAME	DATE

ILLINOIS DEPARTMENT OF TRANSPORTATION
PROPOSED LIGHTING PLAN
W.B. I-74
STA. 152+750 TO STA. 153+100
DRAWN BY DJK
CHECKED BY MKR
DATE: 12/20/04

SEE LIGHTING SHEET 11
LIGHTING SHEET 6 OF 41

12/20/2004 12:44:08 PM m:\proj\15273\lighting\contract\111102-7-4.dwg