

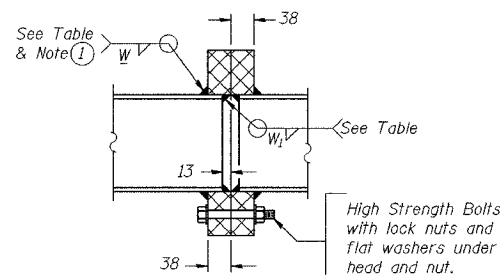
STATE OF ILLINOIS  
DEPARTMENT OF TRANSPORTATION

ROUTE No.	SECTION	COUNTY	TOTAL SHEETS	SHEET NO.
FAI 74	*	TAZEWELL	1366	1305
STA.		TO STA.		
F.H.W.A. REGION		ILLINOIS	PROJECT	

# (90-111R-2;9013, 14, 14-11R-1)  
CONTRACT NO. 68201

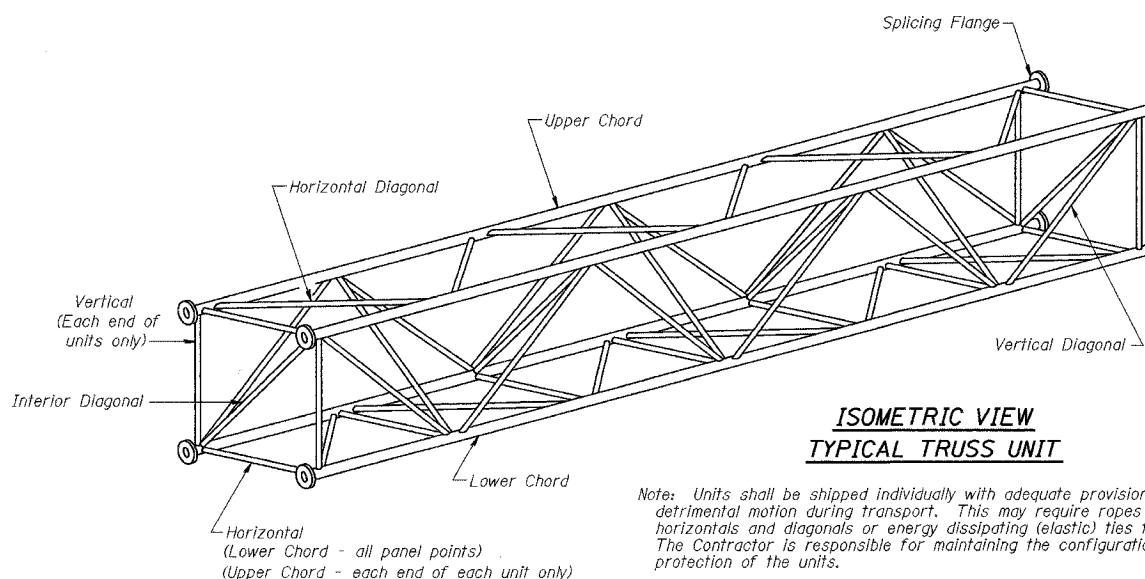
TRUSS UNIT TABLE

Structure Number	Station	Design Truss Type	Exterior Units (2)			Interior Unit				Upper & Lower Chord		Verticals; Horizontals; Vertical, Horizontal, and Interior Diagonals		Camber at Midspan	Splicing Flange					
			No. Panels per Unit	Unit Lgth.(L) (m)	Panel Lgth.(P) (m)	No. Req'd.	No. Panels per Unit	Unit Lgth.(L) (m)	Panel Lgth.(P) (m)	Nom. pipe size	Wall	Nom. pipe size	Wall		HS Bolts			Weird Sizes		
															No./Splice	Dia.	W	W <sub>i</sub>	A	B
4S0901074L095.3	153+410	I-S	8	11.730	1.395	0	---	---	---	127	6.5	64	5.2	44	6	22 φ	10	6	230	311

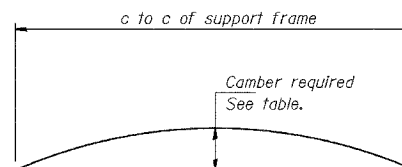


SECTION B-B

① Splicing Flanges shall be attached to each truss unit with the truss shop assembled to camber shown. Truss units shall be in proper alignment and flange surfaces shall be shop bolted into full contact before welding. Sufficient external welds or tacks shall be made to secure flanges until remaining welds are made after disassembly. Adjacent flanges shall be "match marked" to insure proper field assembly.



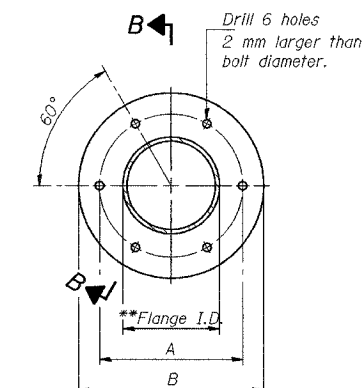
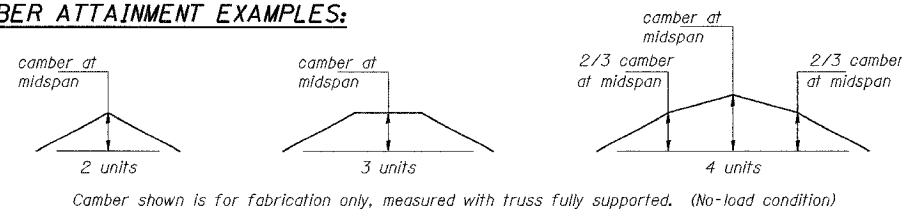
ISOMETRIC VIEW  
TYPICAL TRUSS UNIT



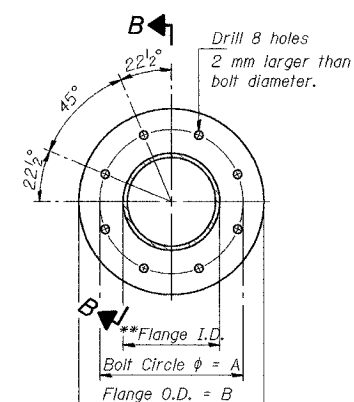
CAMBER DIAGRAM

Camber curve shown is theoretical. Actual camber attained by slope changes at splices between units.

CAMBER ATTAINMENT EXAMPLES:



TRUSS TYPES I-S, II-S, & III-S



TRUSS TYPES II-S & III-S  
SPLICING FLANGES

\*\*To fit O.D. of Chord with maximum gap of 2 mm.

NUMBER	REVISION	DATE

DESIGNED	RJW	2004
CHECKED	KJN	EXAMINED
DRAWN	RJW	ENGINEER OF STRUCTURAL SERVICES
CHECKED	KJN	PASSED
		ENGINEER OF BRIDGES AND STRUCTURES

OS4-S-2(M) 10/1/2001

SIGNING SHEET 54 OF 74

OVERHEAD SIGN STRUCTURES  
STEEL TRUSS DETAILS  
FOR TRUSS TYPES I-S, II-S and III-S

ILLINOIS DEPARTMENT OF TRANSPORTATION

SIGNING PLAN  
W.B. I-74 STA. 153+410, S.N. 4S0901074L095.3

TAZEWELL CO., IL.

DATE: 12-20-04

M:\Proj\3573\Sign Structures\Contract II\sp101-7Aoh-stl.dgn