

PROJECT ENGINEER: RICH DOTSON Ph 671-3455

LIAISON ENGINEER: CHRISTOPHER MAUSHAARD Ph 671-3464

INDEX OF SHEETS

- 1. COVER SHEET
- 2. LISTING OF STANDARDS
- 3. BILL OF MATERIALS
- 4.-8. TYPICAL SECTIONS
- 9.-10. SCHEDULE OF QUANTITIES
- 11. MAINTENANCE OF TRAFFIC
- 12.-20. ROADWAY PLANS
- 21. PAVEMENT MARKING PLAN
- 22. PAVEMENT OVERLAY UNDER STRUCTURE DETAIL
- 23. CLASS B PATCHES (SPECIAL) DETAIL
- 24. BUTT JOINT (SPECIAL) DETAIL
- 25.-28. DISTRICT CADD STANDARDS

DESIGN DESIGNATION

FAI ROUTE 74 - 7625 (25) INTERSTATE 38.28

STATE OF ILLINOIS
 DEPARTMENT OF TRANSPORTATION
 DIVISION OF HIGHWAYS
**PROPOSED
 HIGHWAY PLANS**

FAI ROUTE 74
 SECTION (90-11)R-2;90(13,14,14-1)R-1
 PROJECT
 TAZEWELL COUNTY

C-94-010-02

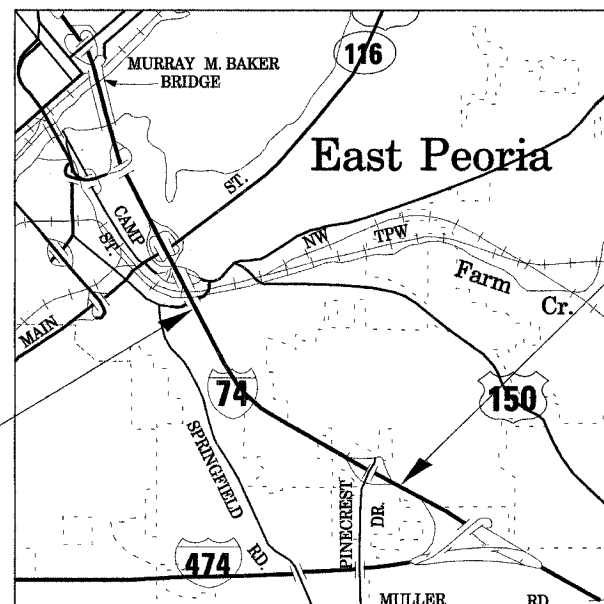
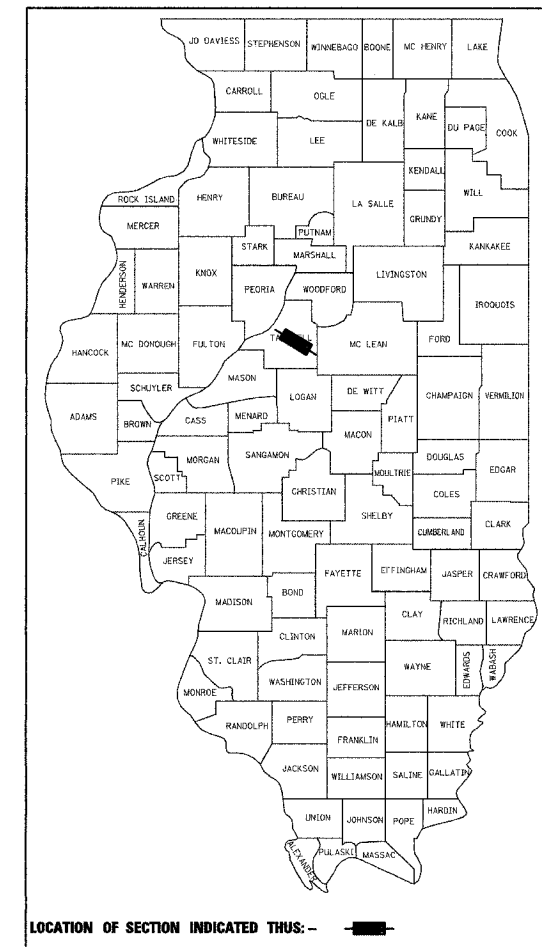
68201

F.A. RTE.	SECTION	COUNTY	TOTAL SHEETS	SHEET NO.
-74-	*	TAZEWELL	1266	1339

*90-11)R-2;90(13,14,14-1)R-1

1

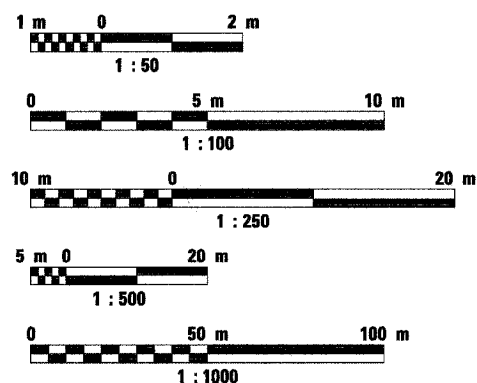
D-94-010-02



PLAN SET #4 PROJECT ENDS
STATION 157 + 666.230

PLAN SET #4 PROJECT BEGINS
STATION 154 + 780.000

METRIC RATIOS



FULL SIZE PLANS HAVE BEEN PREPARED USING STANDARD ENGINEERING SCALES. REDUCED SIZED PLANS WILL NOT CONFORM TO STANDARD SCALES. IN MAKING MEASUREMENTS ON REDUCED PLANS, THE ABOVE SCALES MAY BE USED.

J.U.L.I.E.
 JOINT UTILITY LOCATION INFORMATION FOR EXCAVATION
 1-800-892-0123

CONTRACT NO. 68201 CATALOG NO. 031087-18D

GROSS LENGTH OF IMPROVEMENT: 2.886 km (1.793 MILES)

NET LENGTH OF IMPROVEMENT: 2.886 km (1.793 MILES)

QC/QA BITUMINOUS
 BITUMINOUS SUPERPAVE

PLAN SET #4

PRINTED BY THE AUTHORITY
 OF THE STATE OF ILLINOIS