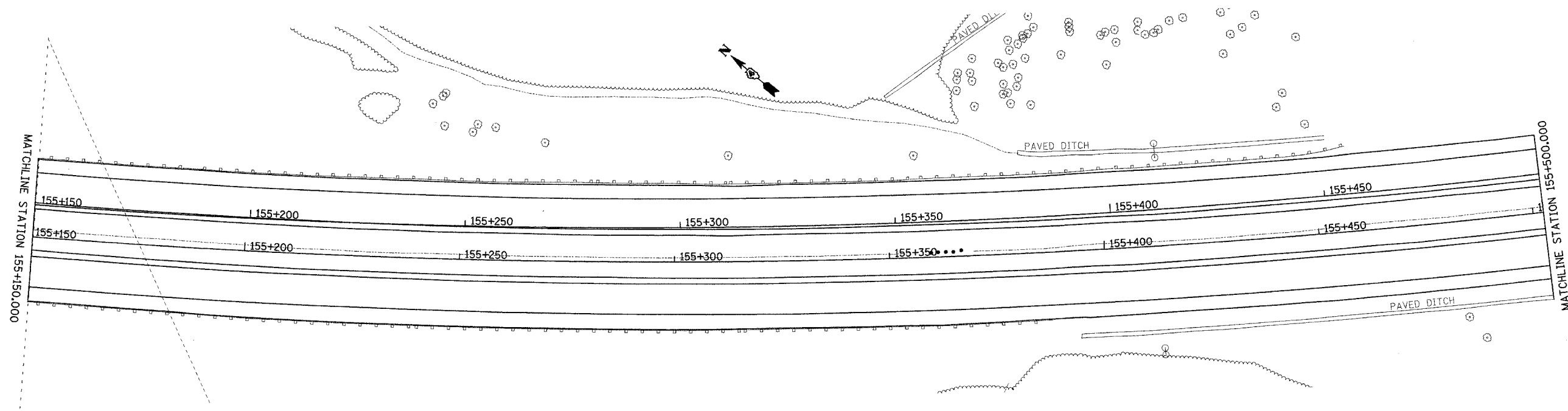


F.A.I. RTE.	SECTION	COUNTY	TOTAL SHEETS NO.	SHEET NO.
74		IAZEWELL	136	135
STA.	TO STA.			
FED. ROAD DIST. NO.	ILLINOIS	FED. AID PROJECT		



ct:projects-174wb-plane.dgn

REVISIONS		ILLINOIS DEPARTMENT OF TRANSPORTATION
NAME	DATE	
		PROPOSED ROADWAY PLAN STATION 155+150.000 WB TO 155+500.000 WB  DRAWN BY CEM CHECKED BY DATE 11/09/04