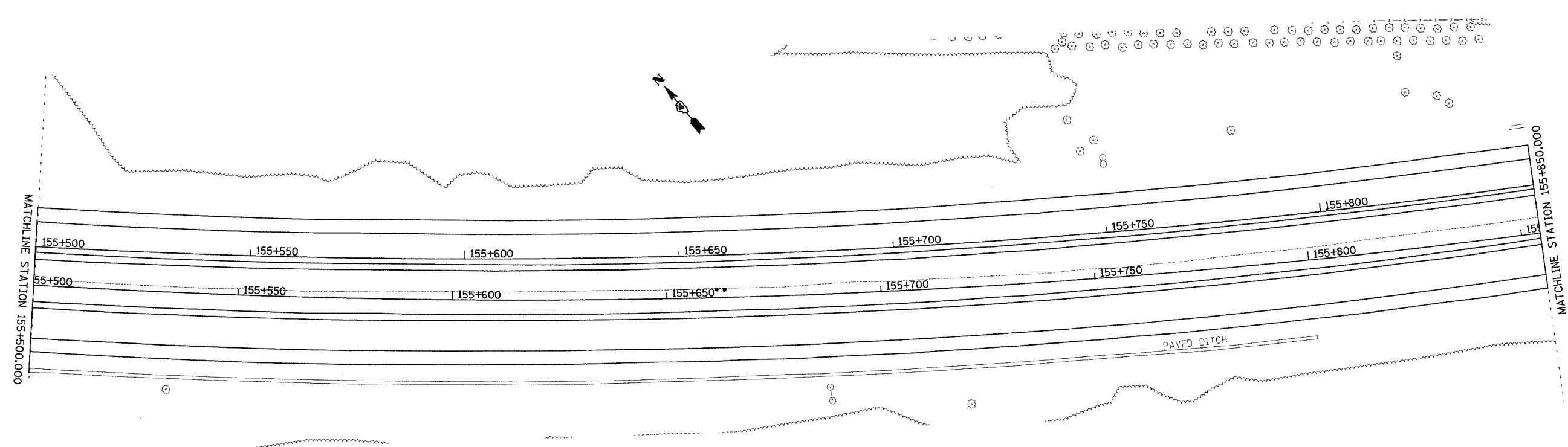


68201

68201

F.A.I. RTE.	SECTION	COUNTY	TOTAL SHEETS	SHEET NO.
74		TAZEWELL	13	14
STA.		TO STA.		
FED. ROAD DIST. NO.		ILLINOIS FED. AID PROJECT		

\*190-111R-2;90113,14,14-1R-1



ci-projects-174wb-plane.dgn

REVISIONS		ILLINOIS DEPARTMENT OF TRANSPORTATION PROPOSED ROADWAY PLAN STATION 155+500.000 WB TO 155+850.000 WB
NAME	DATE	
		DRAWN BY CEM CHECKED BY DATE 11/09/04