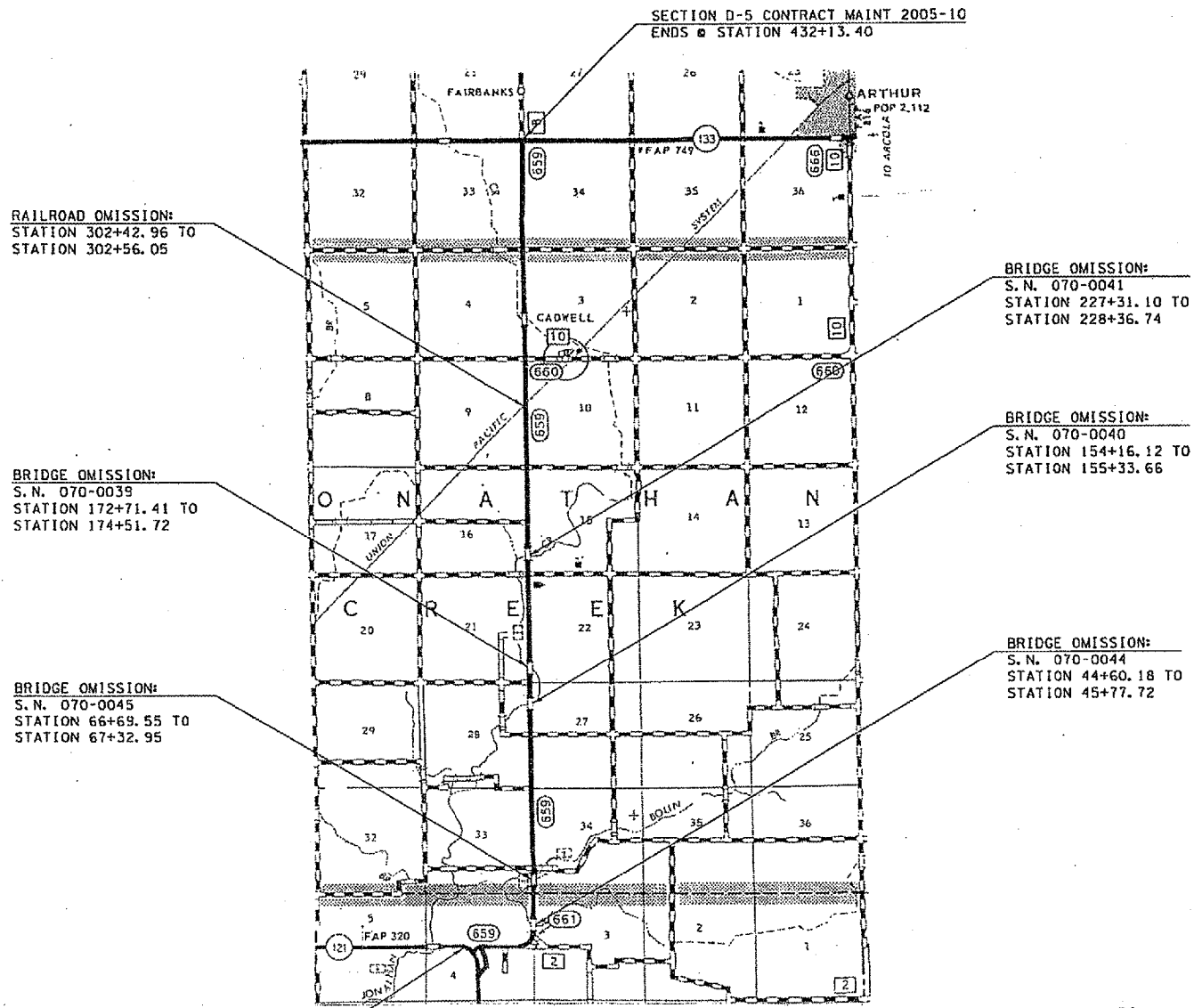
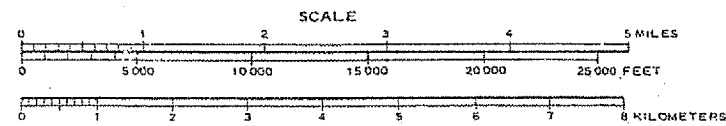


LOCATION MAP #3 CADWELL RD., FROM IL 121 TO IL 133

MOULTRIE COUNTY /RURAL 2-LANE



SECTION D-5 CONTRACT MAINT 2005-10
BEGINS @ STATION 1+29.80



TOTAL LENGTH OF SECTION = 43,083.60 FT. = 8.160 MILES
NET LENGTH OF SECTION = 42,486.08 FT. = 8.047 MILES

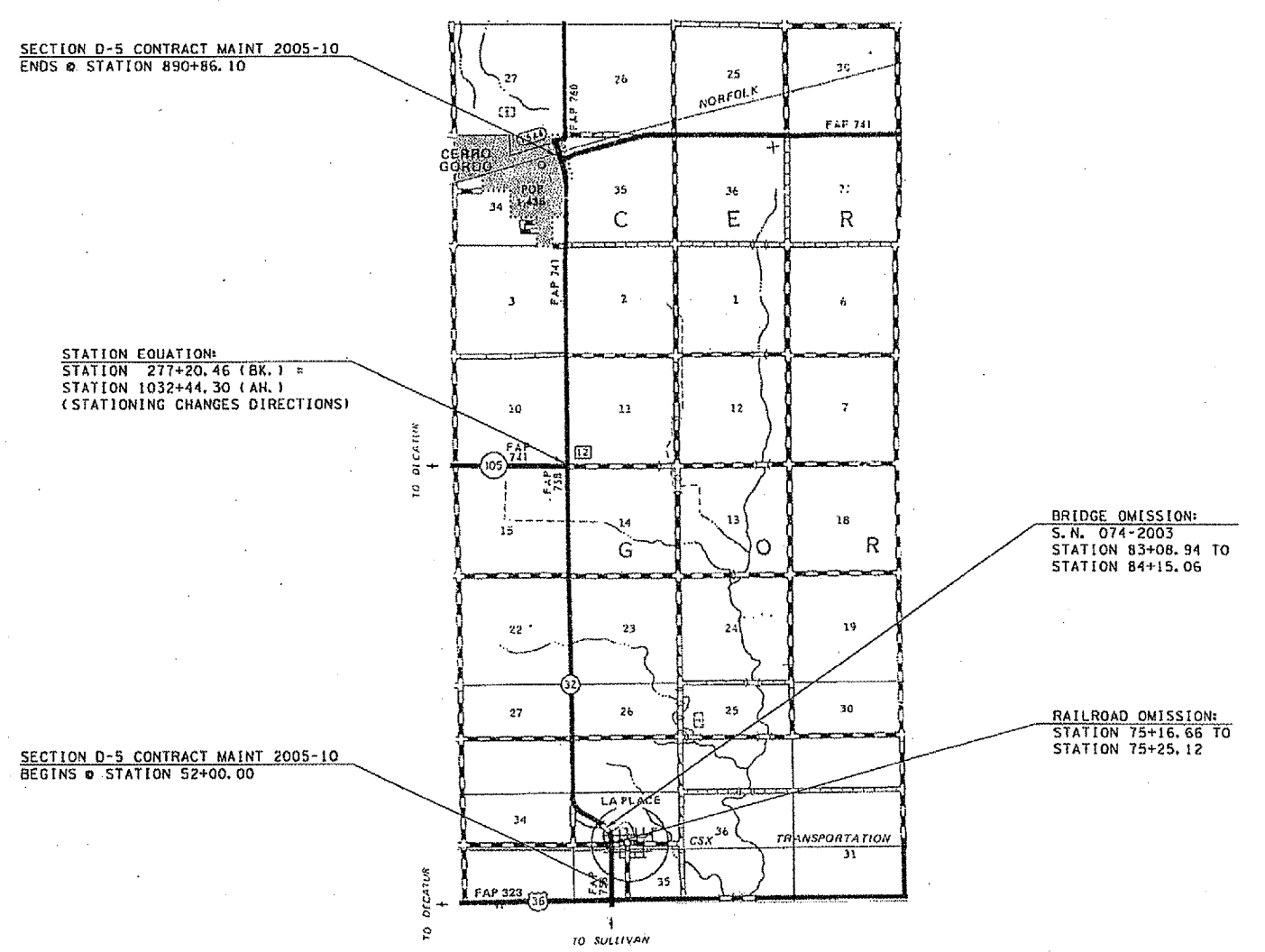


F.A. RY. VAR.	SECTION	COUNTY	TOTAL SHEETS	NO.
.	.	**	20	4

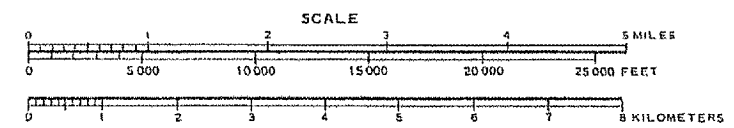
• D-5 CONTRACT MAINT 2005-10
** MACON, MOULTRIE & PIATT
CONTRACT NO. 70449

LOCATION MAP #4 IL 32, FROM U.S. 36 TO CERRO GORDO (IL 105 N)

PIATT COUNTY /RURAL 2-LANE



SECTION D-5 CONTRACT MAINT 2005-10
BEGINS @ STATION 52+00.00



TOTAL LENGTH OF SECTION = 36,678.66 FT. = 6.947 MILES
NET LENGTH OF SECTION = 36,564.08 FT. = 6.925 MILES

