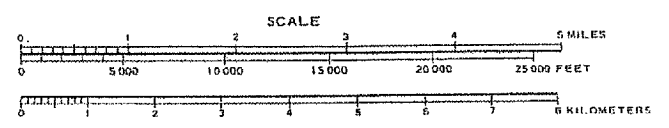
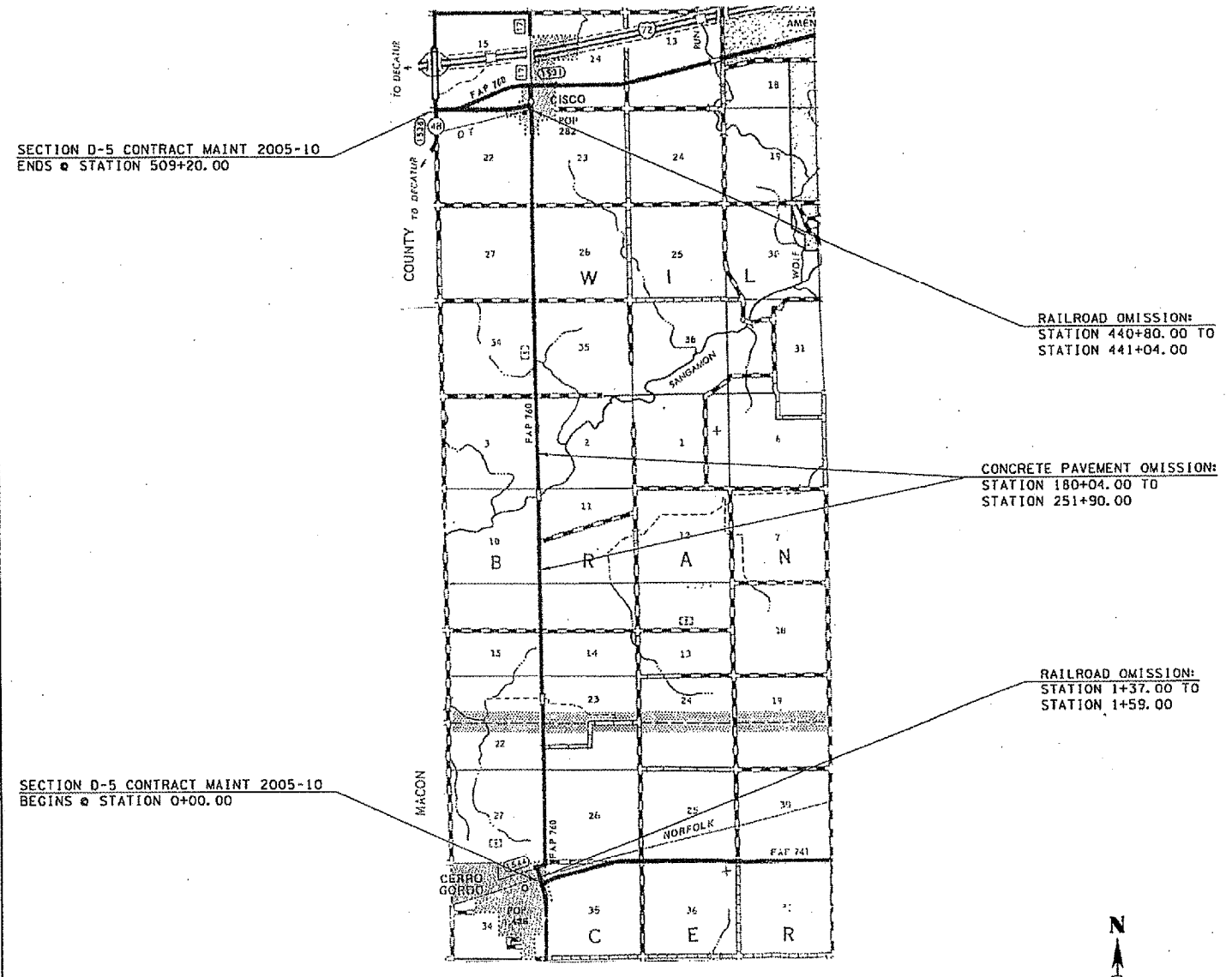


F.A. RTE.	SECTION	COUNTY	TOTAL SHEETS	SHEET NO.
VAR.	*	**	20	5

- D-5 CONTRACT MAINT 2005-10
- \*\* MACON, MOULTRIE & PIATT CONTRACT NO. 70449

## LOCATION MAP #5 IL 32, FROM CERRO GORDO (IL 105 N) TO IL 48

### PIATT COUNTY /RURAL 2-LANE



**TOTAL LENGTH OF SECTION = 50,920.00 FT. = 9.644 MILES**  
**NET LENGTH OF SECTION = 43,688.00 FT. = 8.274 MILES**

