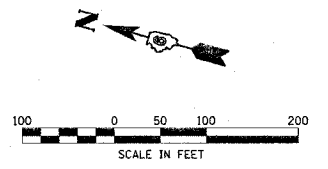


F.A.P. RTE.	SECTION	COUNTY	TOTAL SHEETS	SHEET NO.
502	*	ADAMS	3/5	18
STA.		TO STA.		
FED. ROAD DIST. NO.		ILLINOIS FED. AID PROJECT		

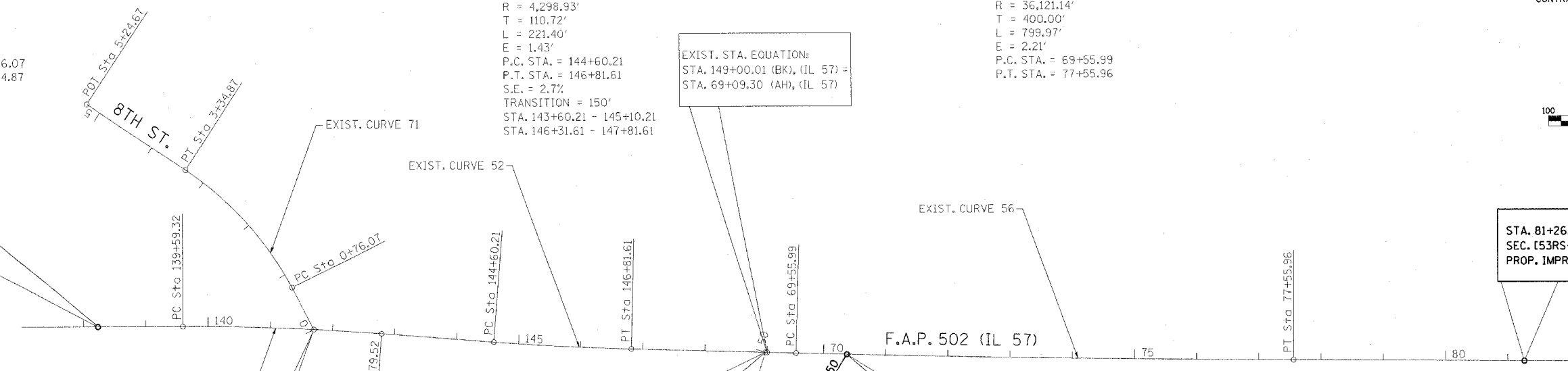
* [53RS-7, PIRS-2]N, TS
CONTRACT NO. 72897



EXIST. CURVE 71
PI STA. = 2+08.40
 $\Delta = 29^\circ 28' 42''$ (LT)
D = 11° 23' 25"
R = 503.02'
T = 132.33'
L = 258.80'
E = 17.12'
P.C. STA. = 0+76.07
P.T. STA. = 3+34.87

EXIST. CURVE 52
PI STA. = 145+70.94
 $\Delta = 2^\circ 57' 03''$ (LT)
D = 1° 19' 58"
R = 4,298.93'
T = 110.72'
L = 221.40'
E = 1.43'
P.C. STA. = 144+60.21
P.T. STA. = 146+81.61
S.E. = 2.7%
TRANSITION = 150'
STA. 143+60.21 - 145+10.21
STA. 146+31.61 - 147+81.61

EXIST. CURVE 56
PI STA. = 73+55.99
 $\Delta = 1^\circ 16' 08''$ (LT)
D = 0° 09' 31"
R = 36,121.14'
T = 400.00'
L = 799.97'
E = 2.21'
P.C. STA. = 69+55.99
P.T. STA. = 77+55.96



STA. 138+23.05 BEGIN
SEC. [53RS-7, PIRS-2]N, TS
PROP. IMPROVEMENTS

STA. 81+26.76 END
SEC. [53RS-7, PIRS-2]N, TS
PROP. IMPROVEMENTS

EXIST. CURVE 51
PI STA. = 141+19.50
 $\Delta = 4^\circ 27' 33''$ (RT)
D = 1° 23' 33"
R = 4,114.29'
T = 160.18'
L = 320.20'
E = 3.12'
P.C. STA. = 139+59.32
P.T. STA. = 142+79.52
S.E. = 2.0%
TRANSITION = 150'
STA. 138+59.32 - 140+09.32
STA. 142+29.52 - 143+60.21

EXIST. STA. EQUATION:
STA. 148+96.96 (IL 57) =
STA. 50+00.00 (EXIST. RADIO RD.)

EXIST. STA. EQUATION:
STA. 46+21.23 (EXIST. RADIO RD.) =
STA. 10+00.00 (6TH ST.)

STATION EQUATION:
STA. 141+70.00 (IL 57) =
STA. 0+00.00 (8TH ST.)

PR. STA. EQUATION:
STA. 70+37.50 (IL 57) =
STA. 50+50.19 (RADIO RD.)

PROP. CURVE C1
PI STA. = 45+39.55
 $\Delta = 14^\circ 18' 15''$ (RT)
D = 7° 38' 22"
R = 750.00'
T = 94.11'
L = 187.24'
E = 5.88'
P.C. STA. = 44+45.44
P.T. STA. = 46+32.68

PR. STA. EQUATION:
STA. 46+22.88 (PROP. RADIO RD.) =
STA. 9+79.10 (6TH ST.)

PR. STA. EQUATION:
STA. 40+00.00 (EXIST. RADIO RD.) =
STA. 40+00.00 (PROP. RADIO RD.)

REVISIONS	
NAME	DATE

ILLINOIS DEPARTMENT OF TRANSPORTATION
ALIGNMENT SCHEMATIC
F.A.P. 502 (IL 57) & RADIO RD.
ADAMS COUNTY
QUINCY, IL.
SCALE: VERT. _____
 HORIZ. _____
DATE 04-12-04
DRAWN BY TMJ
CHECKED BY MEB

c:\projects\0653004\alignschm.tc.dgn
2/3/2005
*REF01