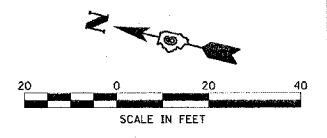
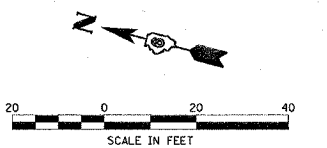
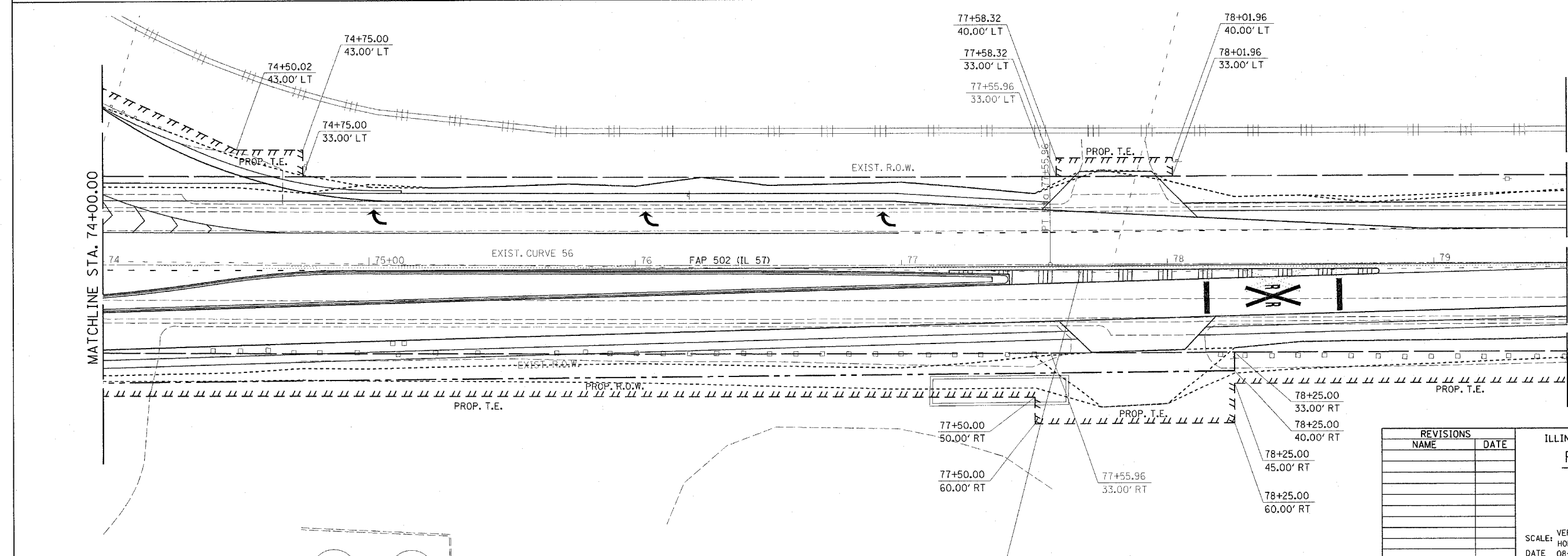
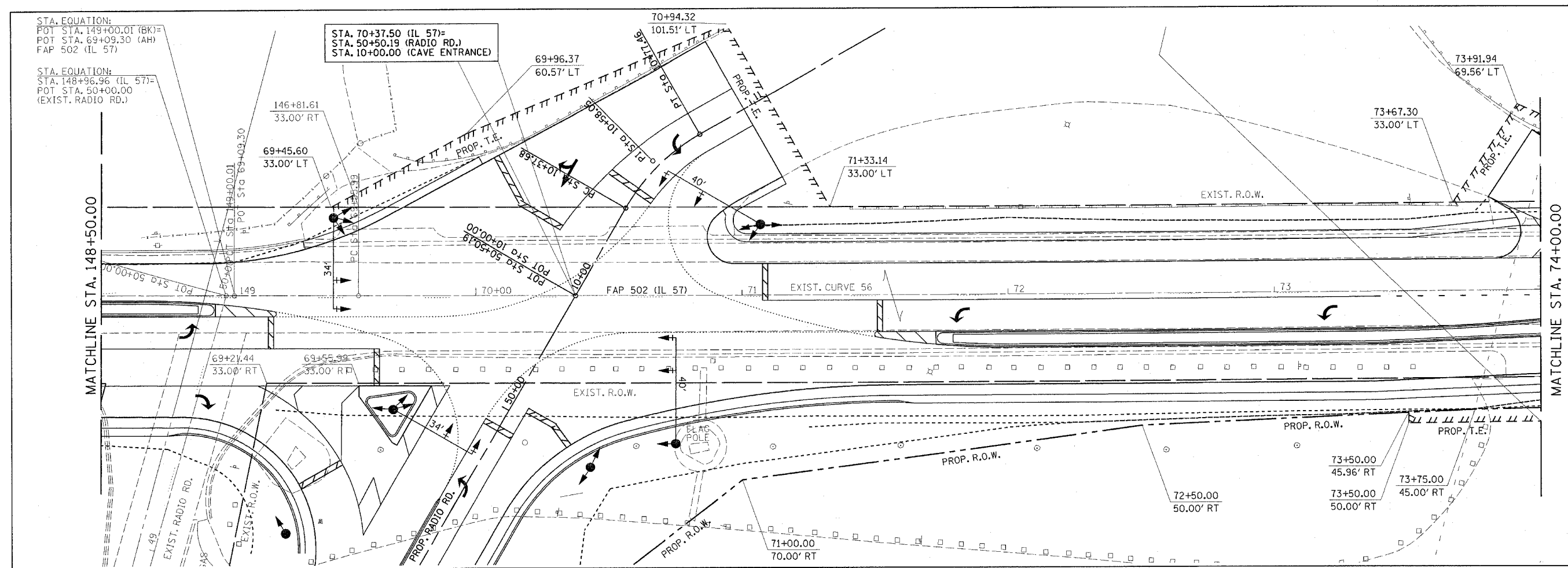


F.A.P. RTE.	SECTION	COUNTY	TOTAL SHEETS	SHEET NO.
502		ADAMS	315	54
STA.		TO STA.		
FED. ROAD DIST. NO.		ILLINOIS FED. AID PROJECT		
[53RS-7, PIRS-2]JN, TS CONTRACT NO. 72897				



EXIST. CURVE 56
 PI STA. = 73+55.99
 $\Delta = 1^\circ 16' 08''$ (LT)
 $D = 0^\circ 09' 31''$
 $R = 36,121.14'$
 $T = 400.00'$
 $L = 799.97'$
 $E = 2.21'$
 $e =$
 $T.R. =$
 $S.E. RUN =$
 $P.C. STA. = 69+55.99$
 $P.T. STA. = 77+55.96$



EXIST. CURVE 56
 PI STA. = 73+55.99
 $\Delta = 1^\circ 16' 08''$ (LT)
 $D = 0^\circ 09' 31''$
 $R = 36,121.14'$
 $T = 400.00'$
 $L = 799.97'$
 $E = 2.21'$
 $e =$
 $T.R. =$
 $S.E. RUN =$
 $P.C. STA. = 69+55.99$
 $P.T. STA. = 77+55.96$

REVISIONS	
NAME	DATE

ILLINOIS DEPARTMENT OF TRANSPORTATION
RIGHT OF WAY DETAILS
 FAP 502 (IL 57) & RADIO ROAD
 SEC. [53RS-7, PIRS-2]JN, TS
 ADAMS COUNTY
 QUINCY, IL.
 SCALE: VERT. _____
 HORIZ. _____
 DATE 08-02-04
 DRAWN BY TMJ
 CHECKED BY MEB

c:\projects\d653004\prow\rightsheets.dgn
 2/3/2005
 *REF01