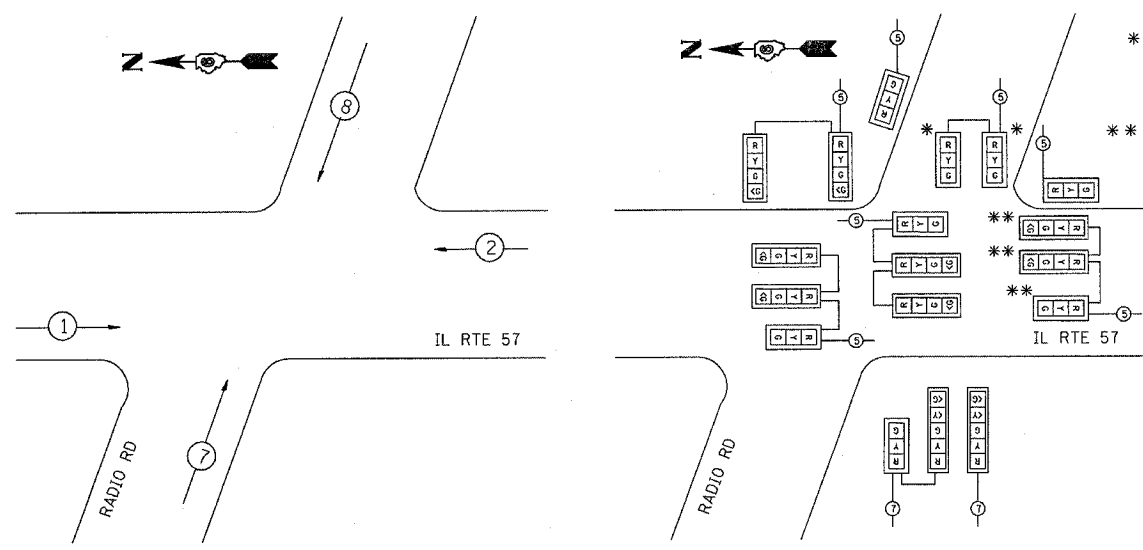


\* TEMPORARY SIGNAL HEADS FOR PROPOSED WEST APPROACH SHALL NOT OPERATE DURING STAGES 1, 2 & 3 AND SHALL BE COVERED. SIGNAL HEAD WIRING SHALL BE LANDED TO PHASE 4 OF TEMPORARY TRAFFIC SIGNAL CONTROLLER CABINET.

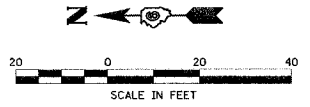
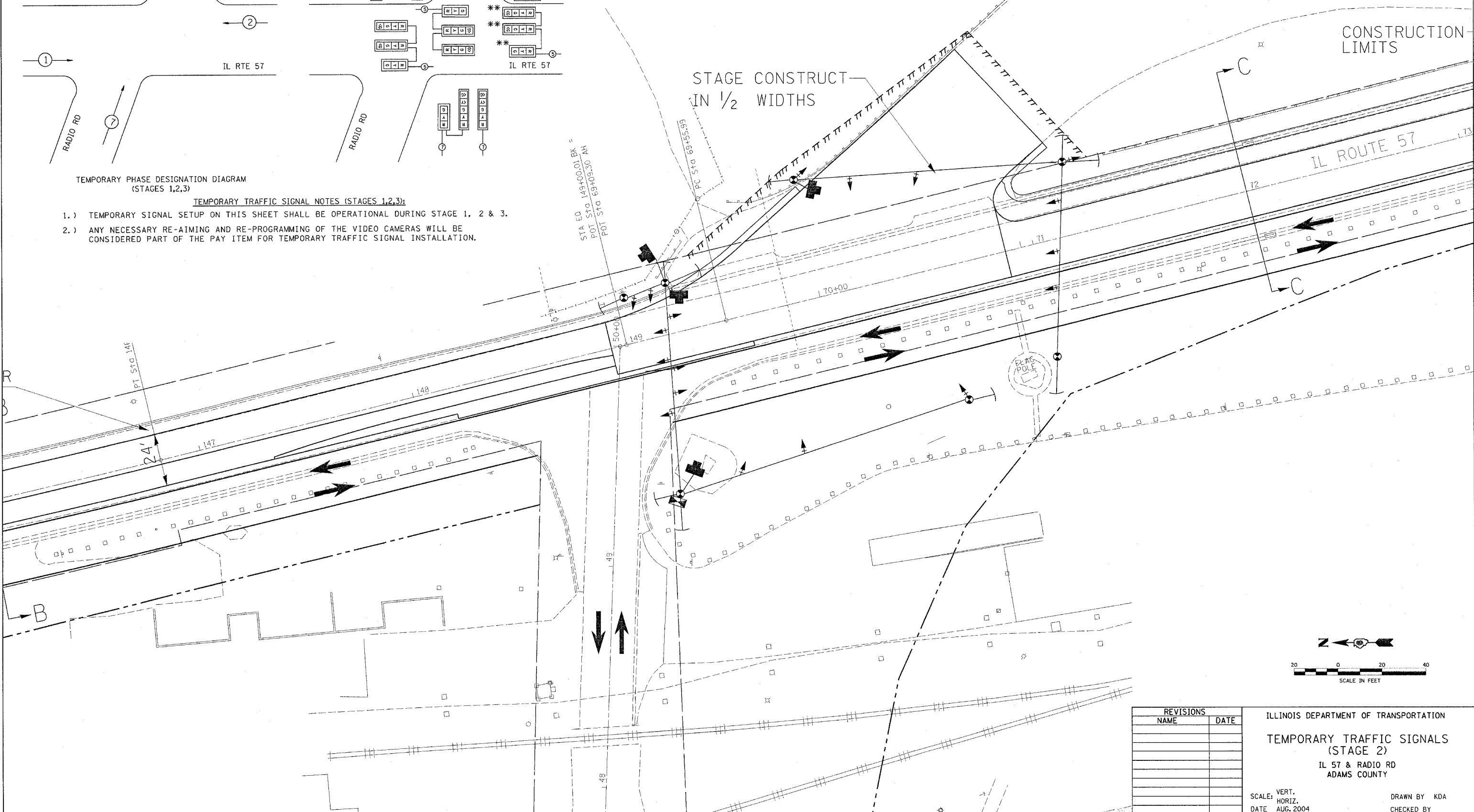
\*\* TEMPORARY SIGNAL HEADS SHALL NOT OPERATE DURING STAGES 1, 2 & 3 AND SHALL BE COVERED. SIGNAL HEAD WIRING SHALL BE LANDED TO PHASE 1 OF TEMPORARY TRAFFIC SIGNAL CONTROLLER CABINET.



TEMPORARY PHASE DESIGNATION DIAGRAM (STAGES 1,2,3)

TEMPORARY TRAFFIC SIGNAL NOTES (STAGES 1,2,3):

- 1.) TEMPORARY SIGNAL SETUP ON THIS SHEET SHALL BE OPERATIONAL DURING STAGE 1, 2 & 3.
- 2.) ANY NECESSARY RE-AIMING AND RE-PROGRAMMING OF THE VIDEO CAMERAS WILL BE CONSIDERED PART OF THE PAY ITEM FOR TEMPORARY TRAFFIC SIGNAL INSTALLATION.



REVISIONS	
NAME	DATE

ILLINOIS DEPARTMENT OF TRANSPORTATION  
**TEMPORARY TRAFFIC SIGNALS (STAGE 2)**  
 IL 57 & RADIO RD  
 ADAMS COUNTY

SCALE: VERT.     DRAWN BY KDA  
 HORIZ.         CHECKED BY  
 DATE AUG. 2004