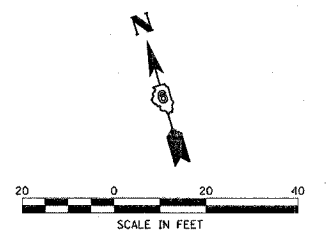


F.A.P. RTE.	SECTION	COUNTY	TOTAL SHEETS	SHEET NO.
502	.	ADAMS	315	101
STA.		TO STA.		
FED. ROAD DIST. NO.		ILLINOIS FED. AID PROJECT		

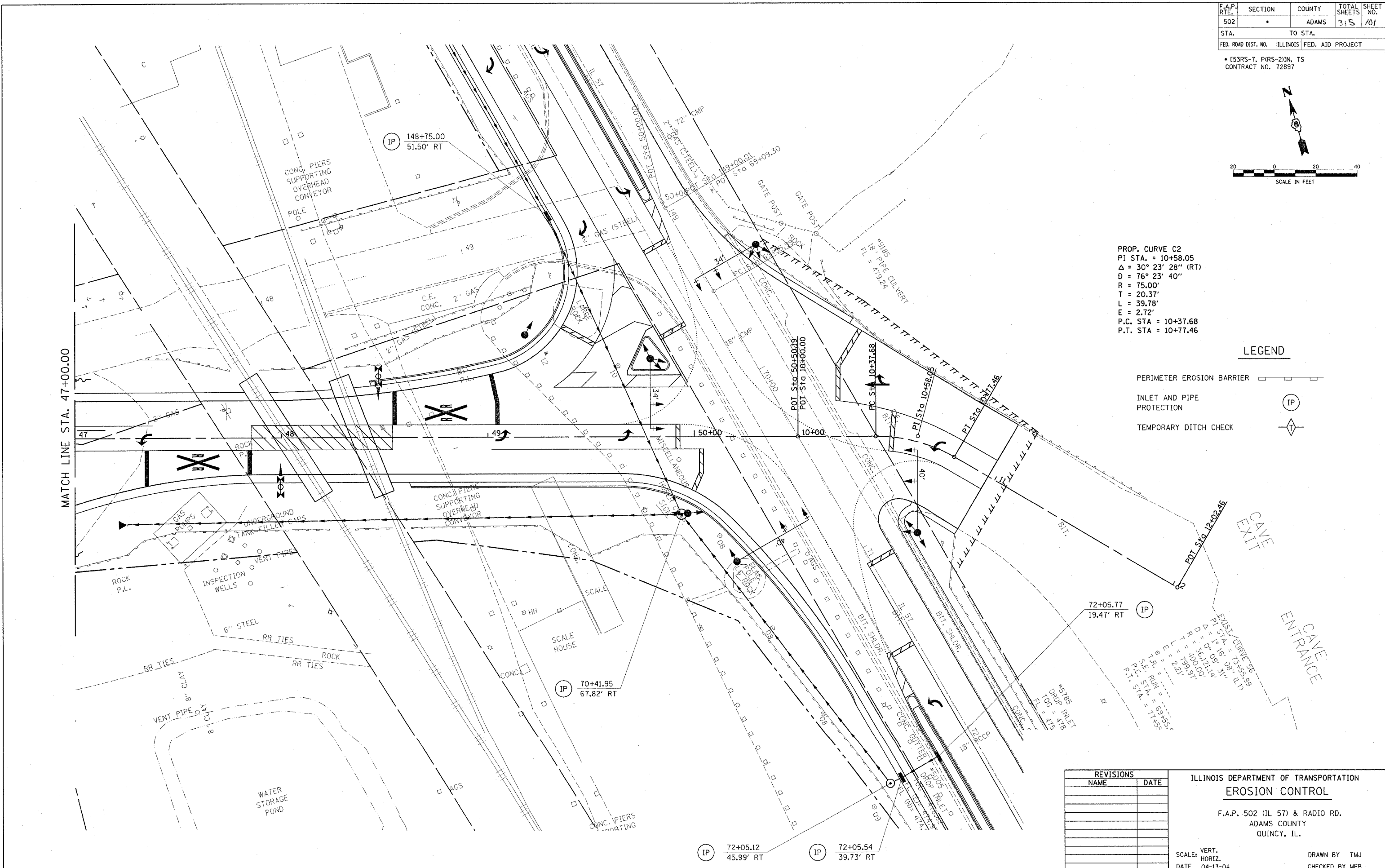
• [53RS-7, P(RS-2)IN, TS
CONTRACT NO. 72897



PROP. CURVE C2
 PI STA. = 10+58.05
 $\Delta = 30^\circ 23' 28''$ (RT)
 $D = 76^\circ 23' 40''$
 $R = 75.00'$
 $T = 20.37'$
 $L = 39.78'$
 $E = 2.72'$
 P.C. STA = 10+37.68
 P.T. STA = 10+77.46

LEGEND

- PERIMETER EROSION BARRIER
- INLET AND PIPE PROTECTION
- TEMPORARY DITCH CHECK



REVISIONS	
NAME	DATE

ILLINOIS DEPARTMENT OF TRANSPORTATION
EROSION CONTROL
 F.A.P. 502 (IL 57) & RADIO RD.
 ADAMS COUNTY
 QUINCY, IL.

SCALE: VERT. _____
 HORIZ. _____
 DATE 04-13-04

DRAWN BY TMJ
 CHECKED BY MEB

c:\projects\d653004\ersnctl.dgn
 2/3/2005
 *REF 01