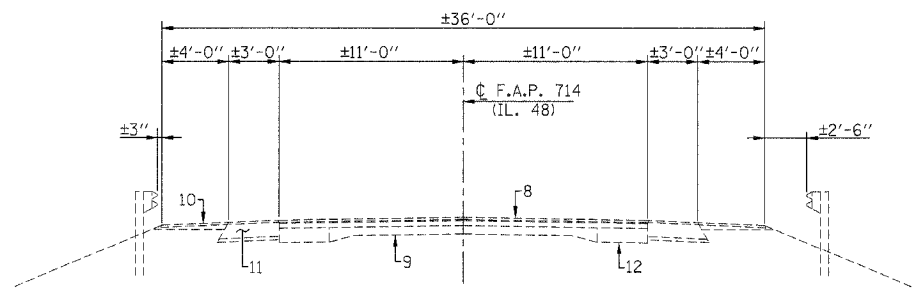
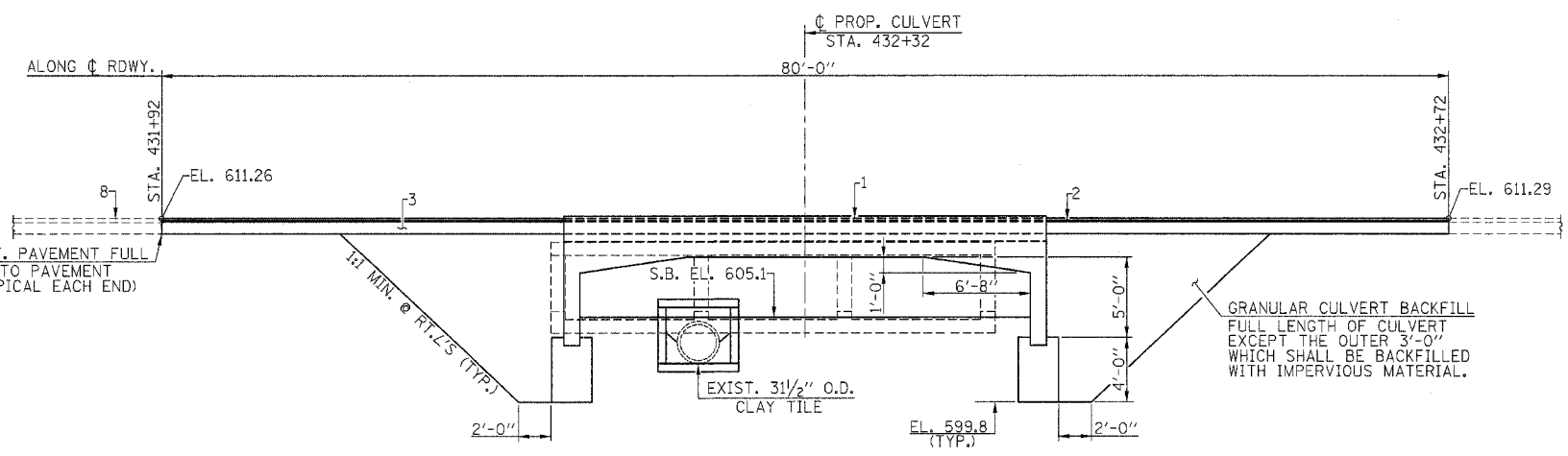


72938

F.A.P. RTE.	SECTION	COUNTY	TOTAL SHEETS	SHEET NO.
714	134B	CHRISTIAN	23	4
STA. 431+92 TO STA. 432+72				
FED. ROAD DIST. NO. ILLINOIS FED. AID PROJECT				

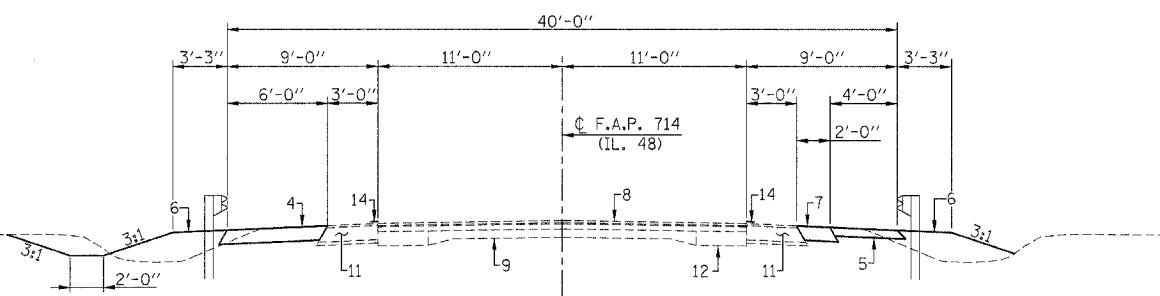


EXISTING TYPICAL SECTION
(STA. 430+00 to STA. 434+17)



ELEVATION - BOX CULVERT

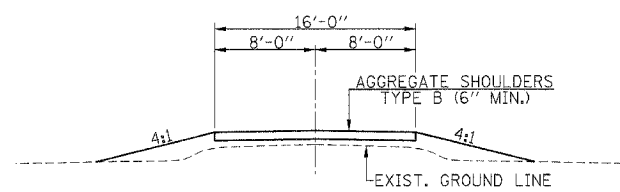
NOTE: ALL DIMENSIONS ARE AT RIGHT ANGLES EXCEPT AS NOTED.



PROPOSED TYPICAL SECTION

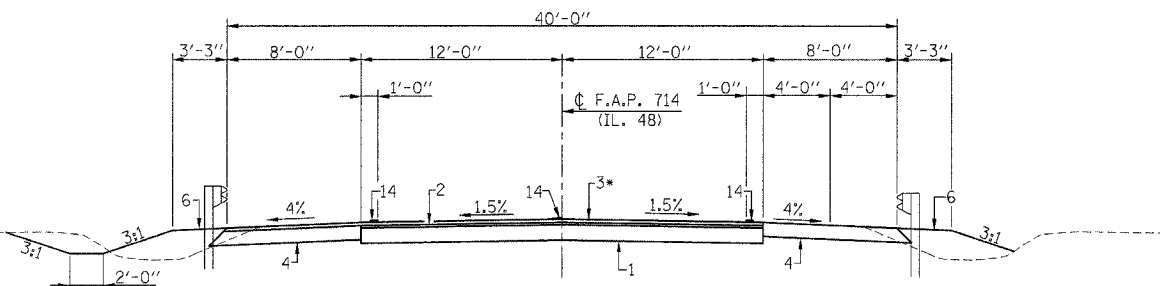
(STA. 430+00 to STA. 431+92 RT., STA. 430+85 TO STA. 431+92 LT., & STA. 432+72 TO STA. 434+17)

* TO BE PLACED AFTER BOTH STAGES HAVE BEEN COMPLETED.



PROPOSED TYPICAL SECTION

(F.E. STA. 433+97 LT.)



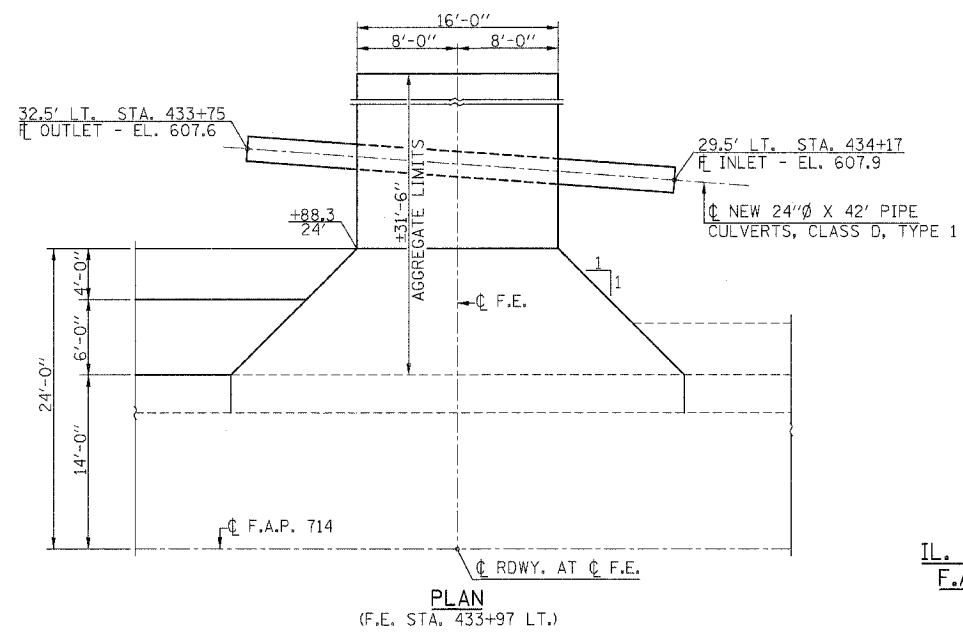
PROPOSED TYPICAL SECTION

(STA. 431+92 to STA. 432+72) **

PAVEMENT LEGEND

1. PROPOSED PORTLAND CEMENT CONCRETE BASE COURSE 9"
2. PROPOSED LEVELING BINDER (MACHINE METHOD) SUPERPAVE, N50 1"
3. PROPOSED BITUMINOUS CONCRETE SURFACE COURSE SUPERPAVE, MIXTURE C, N50 1 1/2"
4. PROPOSED BITUMINOUS BASE COURSE SUPERPAVE (10")
5. PROPOSED AGGREGATE SHOULDER (6")
6. PROPOSED EARTH SHOULDER
7. BITUMINOUS CONCRETE BASE COURSE WIDENING, SUPERPAVE, 10" (TO REMAIN IN PLACE)
8. EXISTING BITUMINOUS OVERLAYS (±4")
9. EXISTING P.C.C. PAVEMENT (9-6-9)
10. EXISTING AGGREGATE SHOULDER (±4")
11. EXISTING BITUMINOUS SHOULDER
12. EXISTING P.C.C. WIDENING
13. TEMPORARY PAVEMENT MARKING - LINE 5"
14. PAINT PAVEMENT MARKING - LINE 5"
15. GEOTECHNICAL FABRIC AND GRANULAR BACKFILL

** GEOTECHNICAL FABRIC TO BE PLACED UNDERNEATH P.C.C. BASE COURSE AND PAVEMENT FABRIC TO BE PLACED WITHIN P.C.C. BASE COURSE FROM STA. 432+11 TO STA. 432+53 (SEE STD. 420701) (COST OF GEOTECHNICAL FABRIC TO BE INCLUDED IN GRANULAR CULVERT BACKFILL AND COST OF PAVEMENT FABRIC INCLUDED IN P.C.C. BASE COURSE).
ESTIMATED QUANTITY - 112 SQ. YD. FOR BOTH GEOTECHNICAL AND PAVEMENT FABRIC.



PLAN

(F.E. STA. 433+97 LT.)

DETAILS AND TYPICAL ROADWAY SECTIONS
IL. ROUTE 48 OVER BUCKHART CREEK
F.A.P. ROUTE 714 - SECTION 134B
CHRISTIAN COUNTY
STA. 432+32
S.N. 011-2505

FILE NAME: D&T.RS (REV. 1/31/05)