

F.A.P. ROUTE NO.	SECTION	COUNTY	TOTAL SHEETS	SHEET NO.
0607	01-00014-00-FP	WILL	85+1	2
STA. TO STA.				
FED. ROAD DIST. NO.		ILLINOIS	FED AID PROJECT CMF-0607 (070)	

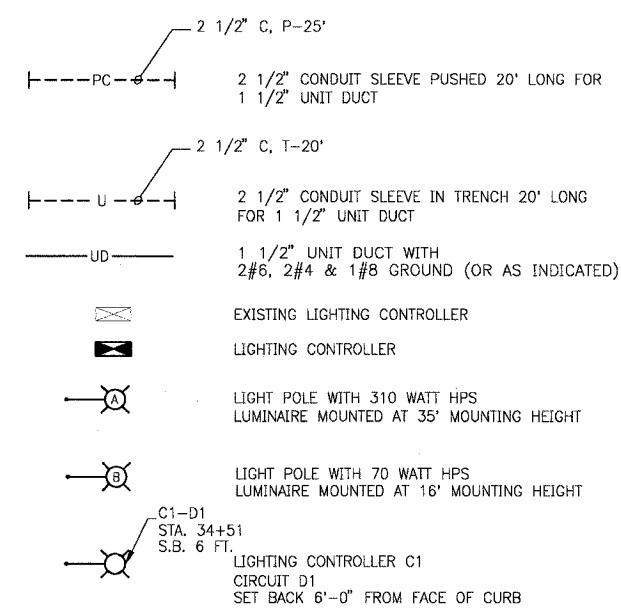
CONTRACT NO. 83786

### LEGEND

EXISTING	PROPOSED
SA — SA — SANITARY SEWER OR SERVICE	SA — SA — SANITARY SEWER OR SERVICE
ST — ST — STORM SEWER OR SERVICE	ST — ST — STORM SEWER OR SERVICE
— W — PIPE UNDERDRAIN	— UD — PIPE UNDERDRAIN
— W — WATER MAIN	— W — WATER MAIN
— WS — WATER SERVICE	— WS — WATER SERVICE
— FM — FORCE MAIN	— FM — FORCE MAIN
⊙ MANHOLE	⊙ MANHOLE
○ CATCH BASIN	○ CATCH BASIN
□ INLET	□ INLET
□ DRYWELL	□ DRYWELL
▽ FLARED END SECTION	▽ FLARED END SECTION
— WH — FIRE HYDRANT	— WH — FIRE HYDRANT
⊙ WV — WATER VALVE W/ BOX AND COVER	⊙ WV — WATER VALVE W/ BOX AND COVER
□ WV — WATER VALVE VAULT	□ WV — WATER VALVE VAULT
⊙ BB — WATER SERVICE BOX OR CURB STOP	⊙ BB — WATER SERVICE BOX OR CURB STOP
○ WM — WATER METER	○ WM — WATER METER
○ CO — CLEAN OUT	○ CO — CLEAN OUT
○ SV — SEPTIC VENT	○ SV — SEPTIC VENT
— TO BE ABANDONED AND/OR REMOVED	— TO BE ABANDONED AND/OR REMOVED
— GAS LINE	— GAS LINE
⊙ GV — GAS VALVE W/ BOX AND COVER	⊙ GV — GAS VALVE W/ BOX AND COVER
□ CW — GAS VALVE VAULT	□ CW — GAS VALVE VAULT
□ GM — GAS METER	□ GM — GAS METER
○ GR — GAS RISER	○ GR — GAS RISER
○ GAS — GAS SERVICE VALVE	○ GAS — GAS SERVICE VALVE
— T — TELEPHONE CABLE	— T — TELEPHONE CABLE
— TD — TELEPHONE DUCT	— TD — TELEPHONE DUCT
□ TEL — TELEPHONE VAULT	□ TEL — TELEPHONE VAULT
□ TR — TELEPHONE RISER	□ TR — TELEPHONE RISER
— TV — CABLE TELEVISION (BURIED)	— TV — CABLE TELEVISION (BURIED)
□ CTV — CABLE T.V. RISER	□ CTV — CABLE T.V. RISER
□ CTV — CABLE T.V. VAULT	□ CTV — CABLE T.V. VAULT
— E — UNDERGROUND ELECTRICAL	— E — UNDERGROUND ELECTRICAL
□ EM — ELECTRIC METER	□ EM — ELECTRIC METER
□ ET — PAD MOUNTED TRANSFORMER	□ ET — PAD MOUNTED TRANSFORMER
□ EV — ELECTRIC VAULT	□ EV — ELECTRIC VAULT
□ JB — JUNCTION BOX	□ JB — JUNCTION BOX
— UTILITY POLE w/ GUY ANCHOR	— UTILITY POLE w/ GUY ANCHOR
— UTILITY POLE w/ LIGHT	— UTILITY POLE w/ LIGHT
— LIGHT STANDARD	— LIGHT STANDARD
□ MB — MAIL BOX	□ MB — MAIL BOX
— STREET SIGN	— STREET SIGN
— RAILROAD SIGNAL	— RAILROAD SIGNAL
— TRAFFIC SIGNAL CONTROLLER	— TRAFFIC SIGNAL CONTROLLER
— TRAFFIC SIGNAL POST w/ SIGNAL HEAD	— TRAFFIC SIGNAL POST w/ SIGNAL HEAD
— HANDHOLE	— HANDHOLE
⊙ 12" DECIDUOUS TREE (W/ TRUNK INCH DIA.)	⊙ 12" DECIDUOUS TREE (W/ TRUNK INCH DIA.)
⊙ 16" CONIFEROUS TREE (W/ HEIGHT)	⊙ 16" CONIFEROUS TREE (W/ HEIGHT)
⊙ DECIDUOUS BUSH	⊙ DECIDUOUS BUSH
⊙ CONIFEROUS BUSH	⊙ CONIFEROUS BUSH
— DEFINING EDGE OF BRUSH OR FORESTED AREA	— DEFINING EDGE OF BRUSH OR FORESTED AREA

### LEGEND

EXISTING	PROPOSED
— X — FENCE	— X — FENCE
— G — GUARD RAIL	— G — GUARD RAIL
— C — CULVERT (CMP UNLESS NOTED)	— C — CULVERT (CMP UNLESS NOTED)
— D — DITCH	— D — DITCH
— S — SUMMIT	— S — SUMMIT
— EL — EDGE OF LAKE, RIVER, ETC.	— EL — EDGE OF LAKE, RIVER, ETC.
— M — MARSH	— M — MARSH
— Top — Toe — TOP OR TOE OF SLOPE	— Top — Toe — TOP OR TOE OF SLOPE
— 742 — CONTOUR	— 742 — CONTOUR
— E — EASEMENT	— E — EASEMENT
— R.O.W. — RIGHT OF WAY (ROW)	— PROP. R.O.W. — FENCED RIGHT OF WAY (ROW)
— R.O.W. — RIGHT OF WAY MONUMENT	— R.O.W. — RIGHT OF WAY MONUMENT
— P.L. — UNFENCED PROPERTY LINE	— P.L. — UNFENCED PROPERTY LINE
— P.L. — FENCED PROPERTY LINE	— P.L. — FENCED PROPERTY LINE
— IP — IRON PIPE (PROPERTY CORNER)	— IP — IRON PIPE (PROPERTY CORNER)
— CL — CORPORATE LIMITS	— CL — CORPORATE LIMITS
— BL — BASE LINE OR SURVEY LINE	— BL — BASE LINE OR SURVEY LINE
— CL — CENTER LINE	— CL — CENTER LINE
— PROPOSED EL. / (EXISTING EL.) (POINT, GUTTER, TOP OF CURB)	— PROPOSED EL. / (EXISTING EL.) (POINT, GUTTER, TOP OF CURB)
— ( # ) — SOIL BORING AND NUMBER	— ( # ) — SOIL BORING AND NUMBER
— B.M. — BENCH MARK	— B.M. — BENCH MARK
— CP — SURVEY CONTROL POINT	— CP — SURVEY CONTROL POINT



STANDARD NO.	HIGHWAY STANDARDS
000001-04	STANDARD SYMBOLS, ABBREVIATIONS AND PATTERNS
280001-02	TEMPORARY EROSION CONTROL SYSTEMS
424001-03	CURB RAMPS FOR SIDEWALKS
442201-01	CLASS C AND D PATCHES
542301	PRECAST REINFORCED CONCRETE FLARED END SECTION
542311	GRATING FOR CONCRETE FLARED END SECTION FOR 600mm (24") THRU 1300mm (54") PIPE
602001	CATCH BASIN, TYPE A
602011	CATCH BASIN, TYPE C
602301	INLET, TYPE A
602401	MANHOLE, TYPE A
602406-01	MANHOLE, TYPE A, 1800mm (72") DIAMETER
602601	PRECAST REINFORCED CONCRETE FLAT SLAB TOP
602701	CAST IRON STEPS
604001-02	FRAME AND LIDS, TYPE 1
604036-01	GRATE, TYPE 8
604091-01	FRAME AND GRATE, TYPE 24
606001-02	CONCRETE CURB TYPE B AND COMBINATION CURB AND GUTTER
630001-05	STEEL PLATE BEAM GUARDRAIL
631033-01	TRAFFIC BARRIER TERMINAL, TYPE 6B
635006-02	REFLECTOR AND TERMINAL MARKER PLACEMENT
635011-01	REFLECTOR MARKER AND MOUNTING DETAILS
701006-02	OFF-RD OPERATIONS 2L, 2W, 4.5m (15') TO 600mm (24") FROM PAVEMENT EDGE
701011-01	OFF-RD MOVING OPERATIONS 2L, 2W, DAY ONLY
701101-01	OFF-RD OPERATIONS, MULTILANE, LESS THAN 4.3m (15') AWAY, FOR SPEEDS > 45 MPH
701301-02	LANE CLOSURE 2L, 2W SHORT TIME OPERATIONS
701326-02	LANE CLOSURE 2L, 2W, PAVEMENT WIDENING, FOR SPEEDS > 45 MPH
701501-03	URBAN LANE CLOSURE, 2L, 2W, UNDIVIDED
701502-01	URBAN LANE CLOSURE, 2L, 2W, WITH BIDIRECTIONAL LEFT TURN LANE (2 SHEETS)
701701-04	URBAN LANE CLOSURE, MULTILANE INTERSECTION
701801-03	LANE CLOSURE MULTILANE, 1W OR 2W CROSSWALK OR SIDEWALK CLOSURE
702001-05	TRAFFIC CONTROL DEVICES (3 SHEETS)
720001	SIGNAL PANEL MOUNTING DETAILS
720016-01	MAST ARM MOUNTED STREET NAME SIGNS
780001-01	TYPICAL PAVEMENT MARKINGS
805001	ELECTRICAL SERVICE INSTALLATION DETAILS
814001	CONCRETE HANDHOLES
814006	DOUBLE HANDHOLES
857001	STANDARD PHASE DESIGNATION DIAGRAMS AND PHASE SEQUENCES (2 SHEETS)
877001-02	STEEL MAST ARM ASSEMBLY AND POLE
878001-03	CONCRETE FOUNDATION DETAILS
880001	SPAN WIRE MOUNTED SIGNALS AND FLASHING BEACON INSTALLATION
880006	TRAFFIC SIGNAL MOUNTING DETAILS
886001	DETECTOR LOOP INSTALLATION

### ABBREVIATIONS

CONC	PORTLAND CEMENT CONCRETE	R	STRUCTURE TO BE RECONSTRUCTED
BIT	BITUMINOUS PAVEMENT	A	STRUCTURE TO BE ADJUSTED
GR	GRAVEL	▲	CENTRAL ANGLE
CMP	CORRUGATED METAL PIPE	D=	DEGREE OF CURVE
FH	FIRE HYDRANT	T=	TANGENT LENGTH
CI	CAST IRON	L=	CURVE LENGTH
DI	DUCTILE IRON	R=	RADIUS OF CURVE
F-F	FACE-TO-FACE	E=	EXTERNAL DISTANCE
E-E	EDGE-TO-EDGE	SE=	SUPERELEVATION (FT. PER FT. OF WIDTH)
B-B	BACK-TO-BACK	X=	EXTERNAL DISTANCE OF VERTICAL CURVE
BM	BENCH MARK	PC	POINT OF CURVATURE
INV EL	INVERT ELEVATION	PI	POINT OF INTERSECTION
CL EL	CENTERLINE ELEVATION	PT	POINT OF TANGENCY
P	POINT	POT	POINT ON TANGENCY
G	GUTTER	PCC	POINT OF COMPOUND CURVATURE
C	CURB	PRC	POINT OF REVERSE CURVATURE
BC	BACK OF CURB	VC	VERTICAL CURVE
EOP	EDGE OF PAVEMENT	N&W	NAIL AND WASHER
PL	PROPERTY LINE	TCE	TEMPORARY CONSTRUCTION EASEMENT
ROW	RIGHT OF WAY		
FL	FLOW LINE		
TF	TOP OF FRAME		
TC	TOP OF CURB OR CONCRETE		

COPYRIGHT © 2004 BY BAXTER & WOODMAN, INC. ALL RIGHTS RESERVED. DRAWING NO. 13665-SH2.DWG

CONSULTANTS	REV. NO.	DATE	DESCRIPTION
	1	12-21-04	PER I.D.O.T. REVIEW
* REFER TO EQUIPMENT MANUFACTURER'S SHOP DRAWINGS			
DRAWING FILE: 13665-SH2.DWG		PLOTTED BY: JKB 15/OCT/04 13:38	

**Baxter & Woodman**  
*Crystal Lake, Illinois 815.459.1280*  
*Burlington, Wisconsin 262.763.7834*  
*Mokena, Illinois 708.478.2090*  
*DeKalb, Illinois 815.787.3111*  
*Orystlake, Illinois 847.223.5088*  
*Rockford, Illinois 815.489.1551*

**VILLAGE OF SHOREWOOD, ILLINOIS**  
**U.S. ROUTE 52 IMPROVEMENTS**

**LEGEND, ABBREVIATIONS**  
**AND HIGHWAY STANDARDS**

DESIGNED BY	SCALE
LDH	NONE
DRAWN BY	PROJECT NO.
DEK	010665
CHECKED BY	SHEET NO.
LDH	
DATE	
10-05-04	