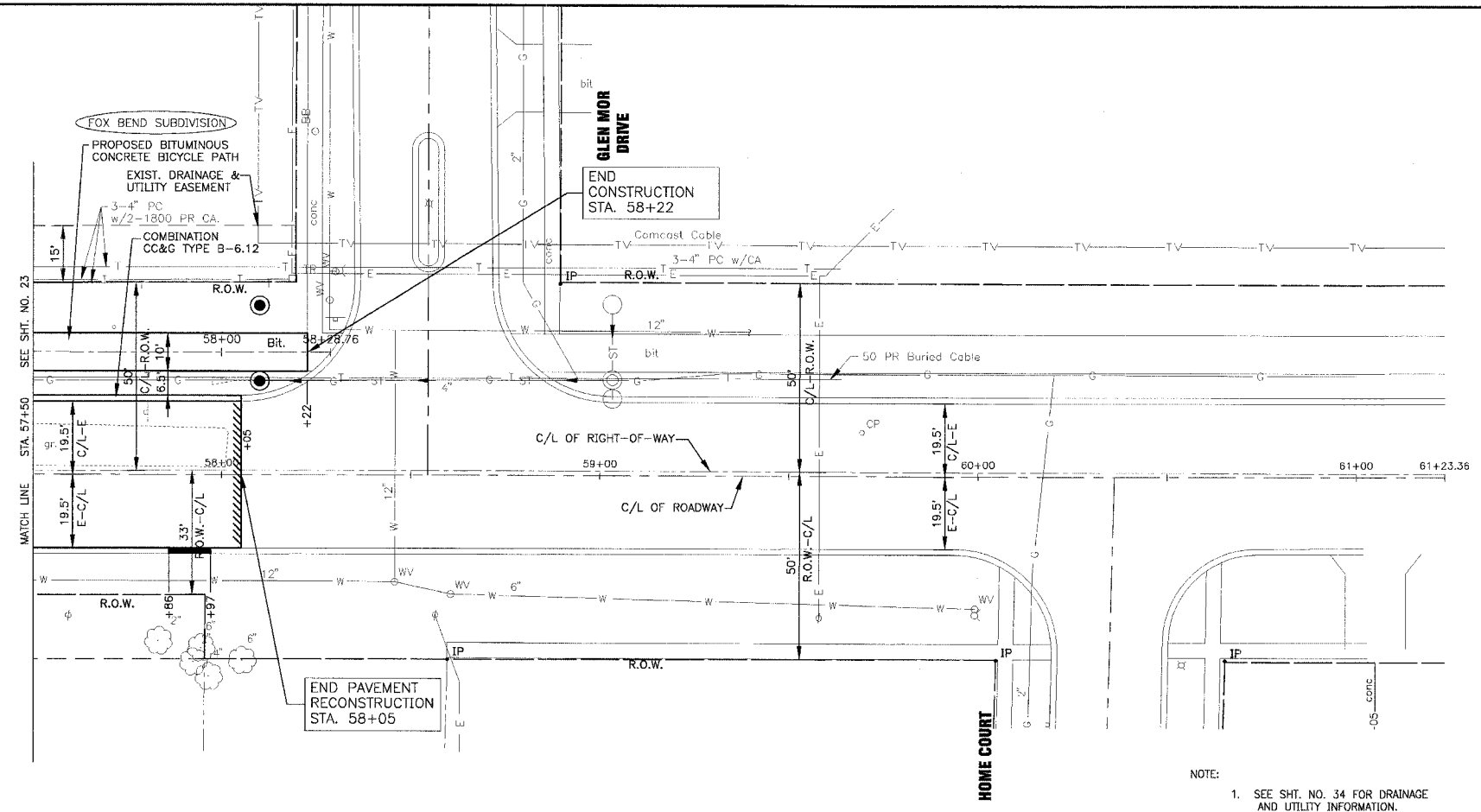
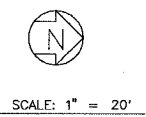
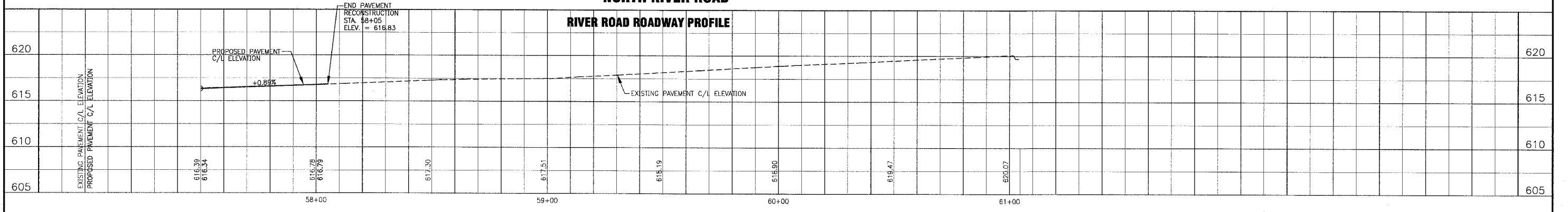


F.A.P. ROUTE NO.	SECTION	COUNTY	TOTAL SHEETS	SHEET NO.
0607	01-00014-00-FP	WILL	85	24
STA. 57+50 TO STA. 61+00				
FED. ROAD DIST. NO.	ILLINOIS	FED. AID PROJECT CMF-0607 (070)		
CONTRACT NO. 83786				

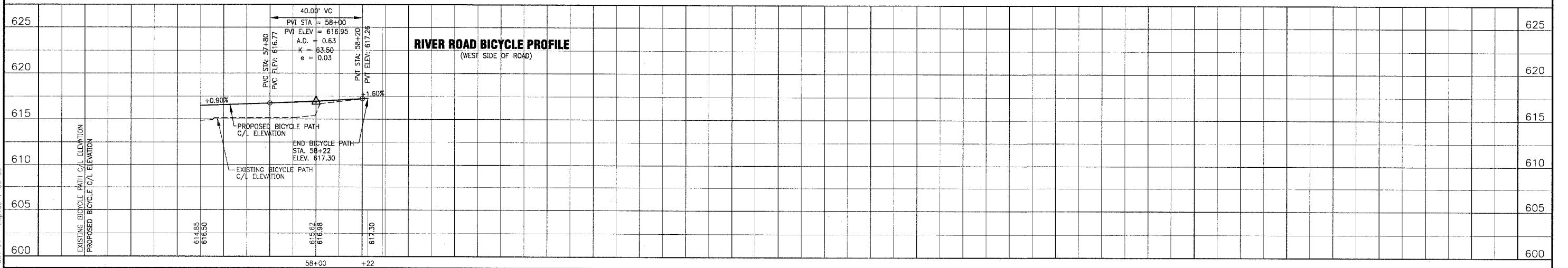


NOTE:
1. SEE SHT. NO. 34 FOR DRAINAGE AND UTILITY INFORMATION.

NORTH RIVER ROAD
RIVER ROAD ROADWAY PROFILE



RIVER ROAD BICYCLE PROFILE
(WEST SIDE OF ROAD)



I:\SHRMD\010665\DWG\510665-PRF.dwg
 Plotted: 12-15-04 @ 10:24am By: 231ubd
 Copyright © 2004, By Baxter & Woodman, Inc.
 State of Illinois - Professional Design Firm
 License No. - 184-00121 - Expires 4-30-05

CONSULTANTS	REV. NO.	DATE	DESCRIPTION
	1	12-21-04	PER I.D.O.T. REVIEW

* REFER TO EQUIPMENT MANUFACTURER'S SHOP DRAWINGS

BAKTER & WOODMAN
Consulting Engineers

Baxter & Woodman
Crystal Lake, Illinois 815.459.1260
Burlington, Wisconsin 262.763.7834
Mokena, Illinois 708.478.2090
DeKalb, Illinois 815.787.3111
Graystake, Illinois 847.223.5088
Rockford, Illinois 815.489.1551

VILLAGE OF SHOREWOOD, ILLINOIS
U.S. ROUTE 52 IMPROVEMENTS

RIVER ROAD
STA. 57+50 TO STA. 61+00
GEOMETRIC PLAN

DESIGNED BY LDH	SCALE VERT: 1"=5'
DRAWN BY LKB	HORIZ: 1"=20'
CHECKED BY LDH	PROJECT NO. 010665
DATE 10-05-04	SHEET NO. 24 OF 85