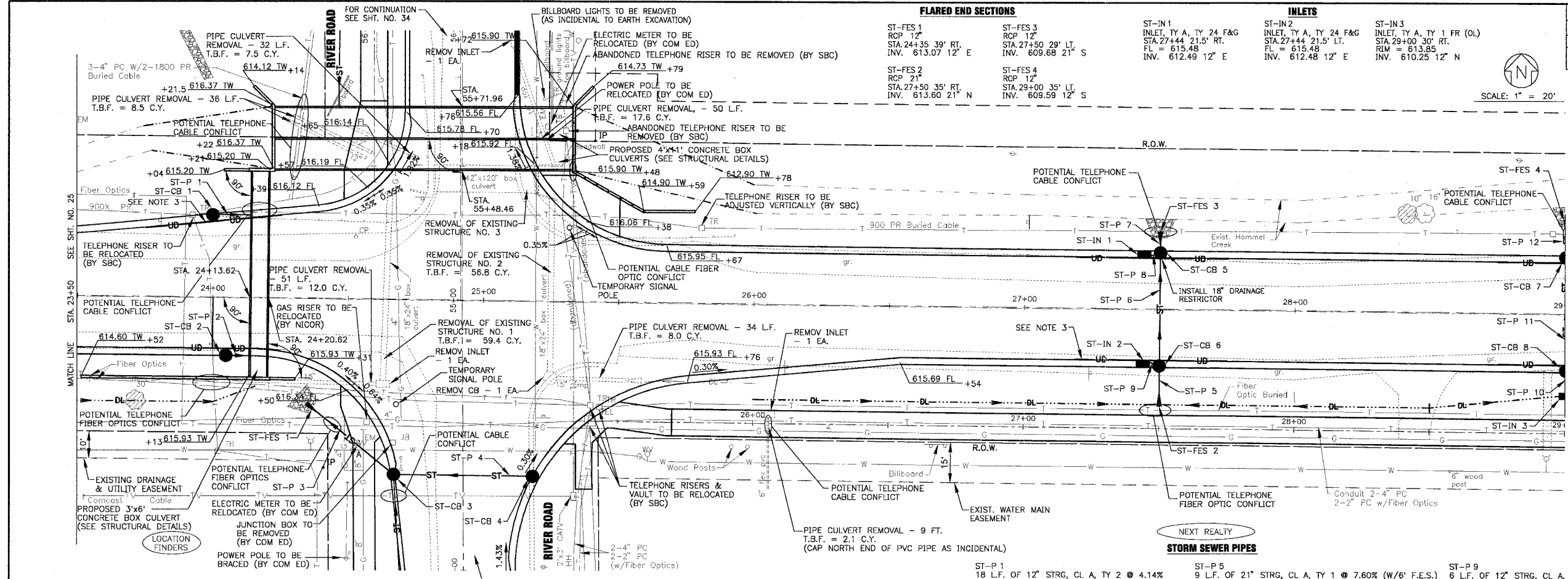


F.A.P. ROUTE NO.	SECTION	COUNTY	TOTAL SHEETS	SHEET NO.
0607	01-00014-00-PP	WILL	85	26A
STA.	TO STA.			
FED. ROAD DIST. NO.	ILLINOIS	FED. AID PROJECT	CNF-0607 (070)	
CONTRACT NO. 83786		<b>CATCH BASINS</b>		

- ST-CB 1  
CATCH BASIN, TY C, TY 24 F&G  
2' DIA.  
STA. 24+00 30.5' LT.  
FL = 615.98  
INV. 611.99 12' NE
- ST-CB 2  
CATCH BASIN, TY C, TY 24 F&G  
2' DIA.  
STA. 24+05 21.5' RT.  
FL = 615.17  
INV. 611.80 12' S
- ST-CB 3  
CATCH BASIN, TY A, TY 24 FR  
4' DIA.  
STA. 24+67.5 65' RT.  
FL = 615.98  
INV. 613.23 12' E, W & S
- ST-CB 4  
CATCH BASIN, TY, C, TY 24 F&G  
2' DIA.  
STA. 24+50 21.5' RT.  
FL = 615.46  
INV. 613.47 12' W
- ST-CB 5  
CATCH BASIN, TY A, TY 24 F&G  
2' DIA.  
STA. 27+50 21.5' LT.  
FL = 615.46  
INV. 610.14 21' N & S  
612.42 12' W
- ST-CB 6  
CATCH BASIN, TY A, TY 24 F&G  
2' DIA.  
STA. 27+50 21.5' RT.  
FL = 615.46  
INV. 612.46 12' W  
612.46 21' N & S
- ST-CB 7  
CATCH BASIN, TY C, TY 24 F&G  
2' DIA.  
STA. 29+00 21.5' RT.  
FL = 615.31  
INV. 610.15 12' N & S
- ST-CB 8  
CATCH BASIN, TY C, TY 24 F&G  
2' DIA.  
STA. 29+00 21.5' RT.  
FL = 615.31  
INV. 610.15 12' N & S

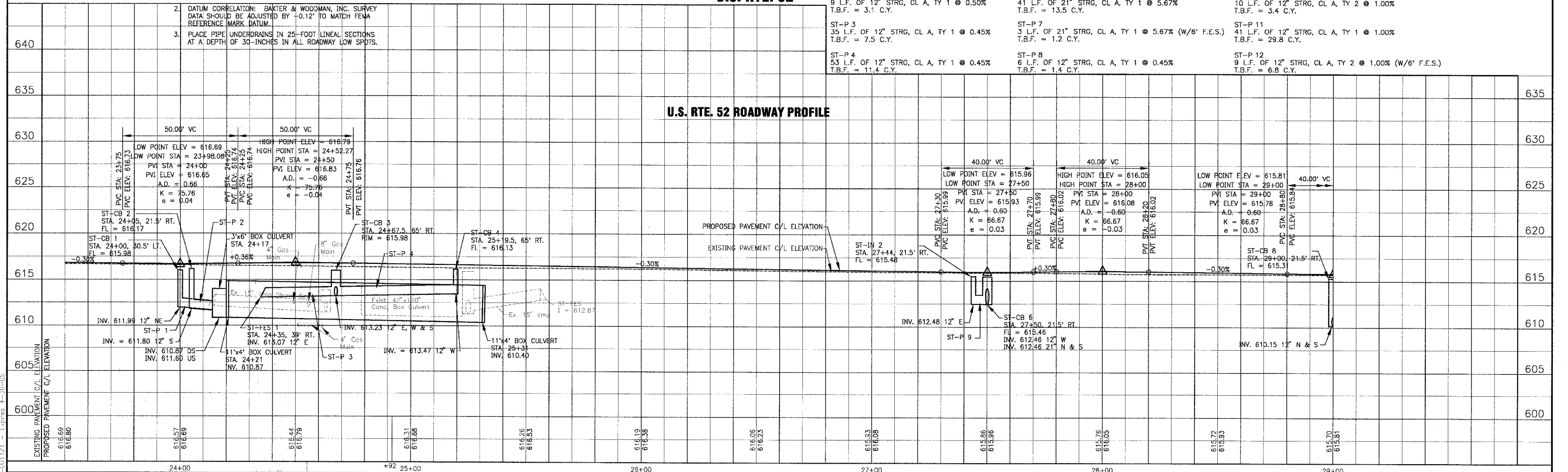
- FLARED END SECTIONS**
- ST-FES 1  
RCP 12"  
STA. 24+35 39' RT.  
INV. 613.07 12' E
  - ST-FES 2  
RCP 21"  
STA. 27+50 35' RT.  
INV. 613.60 21' N
  - ST-FES 3  
RCP 12"  
STA. 27+50 29' LT.  
INV. 609.68 21' S
  - ST-FES 4  
RCP 12"  
STA. 29+00 35' LT.  
INV. 609.59 12' S

- INLETS**
- ST-IN 1  
INLET, TY A, TY 24 F&G  
STA. 27+44 21.5' RT.  
FL = 615.48  
INV. 612.49 12' E
  - ST-IN 2  
INLET, TY A, TY 24 F&G  
STA. 27+44 21.5' LT.  
FL = 615.48  
INV. 612.48 12' E
  - ST-IN 3  
INLET, TY A, TY 1 FR (OL)  
STA. 29+00 30' RT.  
RIM = 613.85  
INV. 610.25 12' N



- NOTE:
- SEE SHT. NO. 16 FOR GEOMETRIC INFORMATION.
  - DATUM CORRELATION: BAXTER & WOODMAN, INC. SURVEY DATA SHOULD BE ADJUSTED BY -0.12' TO MATCH FEMA REFERENCE MARK DATUM.
  - PLACE PIPE UNDERDRAINS IN 25-FOOT LINEAL SECTIONS AT A DEPTH OF 30-INCHES IN ALL ROADWAY LOW SPOTS.

- STORM SEWER PIPES**
- ST-P 1  
18 L.F. OF 12" STRG, CL A, TY 2 @ 4.14%  
T.B.F. = 3.1 C.Y.
  - ST-P 2  
9 L.F. OF 12" STRG, CL A, TY 1 @ 0.50%  
T.B.F. = 3.1 C.Y.
  - ST-P 3  
35 L.F. OF 12" STRG, CL A, TY 1 @ 0.45%  
T.B.F. = 7.5 C.Y.
  - ST-P 4  
53 L.F. OF 12" STRG, CL A, TY 1 @ 0.45%  
T.B.F. = 11.4 C.Y.
  - ST-P 5  
9 L.F. OF 21" STRG, CL A, TY 1 @ 7.60% (W/6' F.E.S.)  
T.B.F. = 2.0 C.Y.
  - ST-P 6  
41 L.F. OF 21" STRG, CL A, TY 1 @ 5.67%  
T.B.F. = 13.5 C.Y.
  - ST-P 7  
3 L.F. OF 21" STRG, CL A, TY 1 @ 5.67% (W/6' F.E.S.)  
T.B.F. = 1.2 C.Y.
  - ST-P 8  
6 L.F. OF 12" STRG, CL A, TY 1 @ 0.45%  
T.B.F. = 1.4 C.Y.
  - ST-P 9  
6 L.F. OF 12" STRG, CL A, TY 1 @ 1.00%  
T.B.F. = 1.4 C.Y.
  - ST-P 10  
10 L.F. OF 12" STRG, CL A, TY 2 @ 1.00%  
T.B.F. = 3.4 C.Y.
  - ST-P 11  
41 L.F. OF 12" STRG, CL A, TY 1 @ 1.00%  
T.B.F. = 29.8 C.Y.
  - ST-P 12  
9 L.F. OF 12" STRG, CL A, TY 2 @ 1.00% (W/6' F.E.S.)  
T.B.F. = 6.8 C.Y.



CONSULTANTS	REV. NO.	DATE	DESCRIPTION
	1	12-21-04	PER I.D.O.T. REVIEW

DRAWING FILE: PLOTTED BY:

**BAXTER & WOODMAN**  
Consulting Engineers

*Baxter & Woodman*  
Crystal Lake, Illinois 815.458.1260  
Burlington, Wisconsin 262.763.7834  
Mokena, Illinois 708.478.2090  
DeKalb, Illinois 815.787.3111  
Grayslake, Illinois 847.223.6088  
Rockford, Illinois 815.488.1551

**VILLAGE OF SHOREWOOD, ILLINOIS**  
**U.S. ROUTE 52 IMPROVEMENTS**

**U.S. ROUTE 52**  
**STA. 23+50 TO STA. 29+00**  
**DRAINAGE & UTILITY PLAN**

DESIGNED BY: LDH  
DRAWN BY: LKB  
CHECKED BY: LDH  
DATE: 10-05-04

SCALE VERT: 1"=5'  
HORIZ: 1"=20'

PROJECT NO.: 010665  
SHEET NO.: 26A OF 85

1. SHRMW\010665\DWG\0607-00-PP.dwg  
Plotted 10/5/04 8:50am by: LDH  
Scale of 1"=20' 3/4"  
State of Illinois Professional Engineer License No. 184-001121 - Expires 4-30-05