

FLARED END SECTIONS

ST-FES 5
RCP 15"
STA. 31+50.35' LT.
INV. 609.67 15" S

ST-FES 6
RCP 12"
STA. 33+50.33' LT.
INV. 609.92 12" S

CATCH BASINS

ST-CB 9
CATCH BASIN, TY A, TY 24 F&G
4' DIA.
STA. 31+50.215' RT.
FL = 615.16
INV. 610.33 12" E & W
610.11 15" N

ST-CB 10
CATCH BASIN, TY A, TY 24 F&G
4' DIA.
STA. 31+50.215' LT.
FL = 615.16
INV. 610.00 12" E
609.78 15" N & S

ST-CB 11
CATCH BASIN, TY C, TY 24 F&G
2' DIA.
STA. 33+50.215' RT.
FL = 615.46
INV. 610.17 12" N & S

ST-CB 12
CATCH BASIN, TY C, TY 24 F&G
2' DIA.
STA. 33+50.215' LT.
FL = 615.46
INV. 609.98 12" N & S

F.A.P. ROUTE NO.	SECTION	COUNTY	TOTAL SHEETS	SHEET NO.
0607	01-00014-00-FP	WILL	85	27
STA.	TO STA.	ILLINOIS	FED AID PROJECT	
			CMF-0607 (070)	

CONTRACT NO. 83786

STORM SEWER PIPES

ST-P 13
12 L.F. OF 12" STRG. CL A, TY 2 @ 1.00%
T.B.F. = 4.6 C.Y.

ST-P 14
42 L.F. OF 15" STRG. CL A, TY 1 @ 0.79%
T.B.F. = 31.3 C.Y.

ST-P 15
8 L.F. OF 15" STRG. CL A, TY 1 @ 0.79%
(W/6' F.E.S.)
T.B.F. = 5.0 C.Y.

ST-P 16
5 L.F. OF 12" STRG. CL A, TY 2 @ 1.00%
T.B.F. = 3.3 C.Y.

ST-P 17
5 L.F. OF 12" STRG. CL A, TY 2 @ 1.00%
T.B.F. = 3.6 C.Y.

ST-P 18
14 L.F. OF 12" STRG. CL A, TY 1 @ 0.45%
T.B.F. = 4.8 C.Y.

ST-P 19
42 L.F. OF 12" STRG. CL A, TY 1 @ 0.45%
(W/6' F.E.S.)
T.B.F. = 31.9 C.Y.

ST-P 20
7 L.F. OF 12" STRG. CL A, TY 2 @ 0.45%
(W/6' F.E.S.)
T.B.F. = 4.4 C.Y.

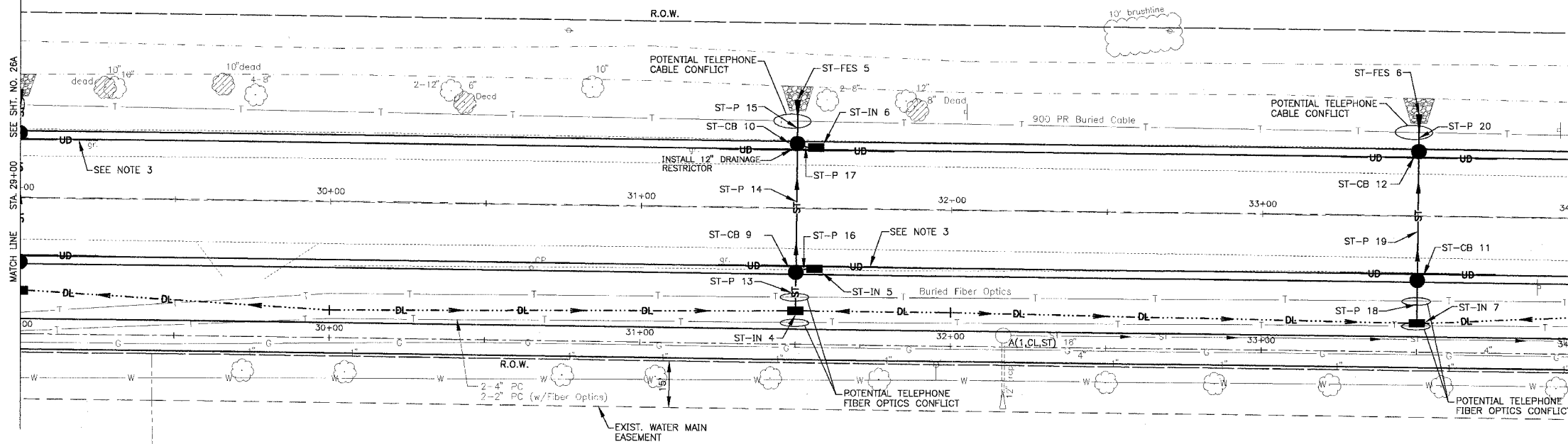
INLETS

ST-IN 4
INLET, TY A, TY 1 FR, OL
STA. 31+50.33' RT.
RIM = 613.60
INV. 610.45 12" N

ST-IN 6
INLET, TY A, TY 24 F&G
STA. 31+58.215' LT.
FL = 615.17
INV. 610.05 12" W

ST-IN 5
INLET, TY A, TY 24 F&G
STA. 31+58.215' RT.
FL = 615.17
INV. 610.38 12" W

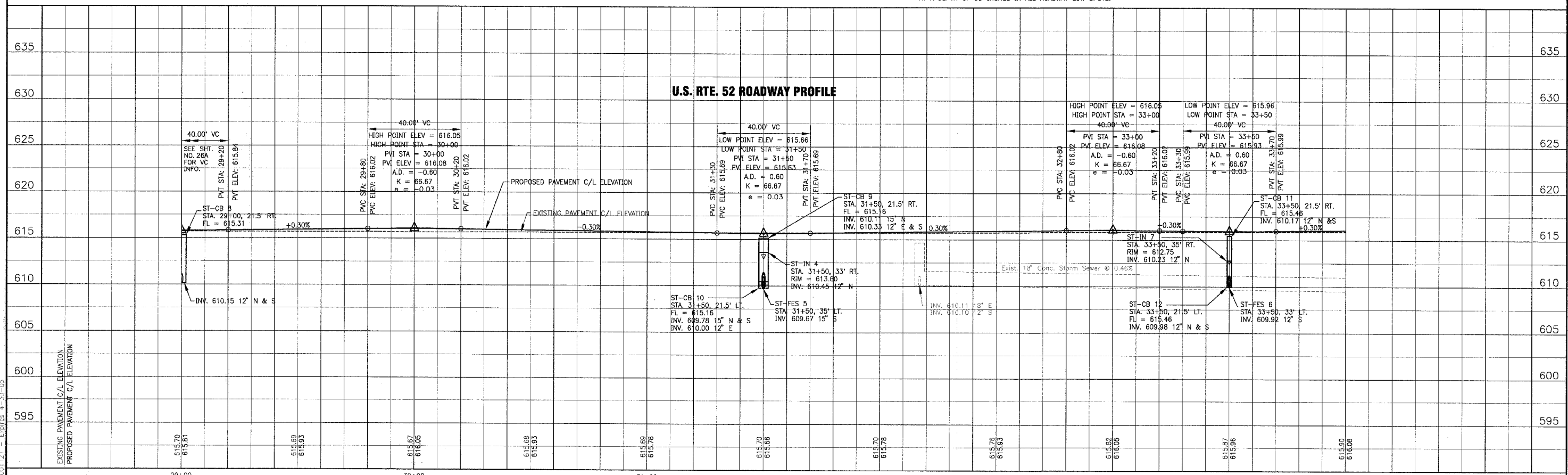
ST-IN 7
INLET, TY A, TY 1, OL
STA. 33+50.35' RT.
RIM = 612.75
INV. 610.23 12" W



NOTE:

- SEE SHT. NO. 17 FOR GEOMETRIC INFORMATION.
- DATUM CORRELATION: BAXTER & WOODMAN, INC. SURVEY DATA SHOULD BE ADJUSTED BY -0.12' TO MATCH FEMA REFERENCE MARK DATUM.
- PLACE PIPE UNDERDRAINS IN 25-FOOT LINAL SECTIONS AT A DEPTH OF 30-INCHES IN ALL ROADWAY LOW SPOTS.

U.S. RTE. 52



I:\SHRWD\010665\DWG\10665-PRF.dwg
 Plotted: 1-04-05 @ 10:36am By: 23 Luko
 Copyright © 2004, by Baxter & Woodman, Inc.
 State of Illinois - Professional Design Firm
 License No. 18-03121 - Expires 4-30-05

CONSULTANTS	REV. NO.	DATE	DESCRIPTION
	1	12-21-04	PER I.D.O.T. REVIEW

* REFER TO EQUIPMENT MANUFACTURER'S SHOP DRAWINGS DRAWING FILE: PLOTTED BY:

BAXTER & WOODMAN
 Consulting Engineers
 Crystal Lake, Illinois 815.459.1260
 Burlington, Wisconsin 262.763.7834
 Mokena, Illinois 708.478.2090
 DeKalb, Illinois 815.787.3111
 Grayslake, Illinois 847.223.5088
 Rockford, Illinois 815.488.1561

VILLAGE OF SHOREWOOD, ILLINOIS
U.S. ROUTE 52 IMPROVEMENTS

US. ROUTE 52
STA. 29+00 TO STA. 34+00
DRAINAGE & UTILITY PLAN

DESIGNED BY LDH	SCALE VERT: 1"=5'
DRAWN BY UK9	HORIZ: 1"=20'
CHECKED BY LDH	PROJECT NO. 010665
DATE 10-05-04	SHEET NO. 27 OF 85