

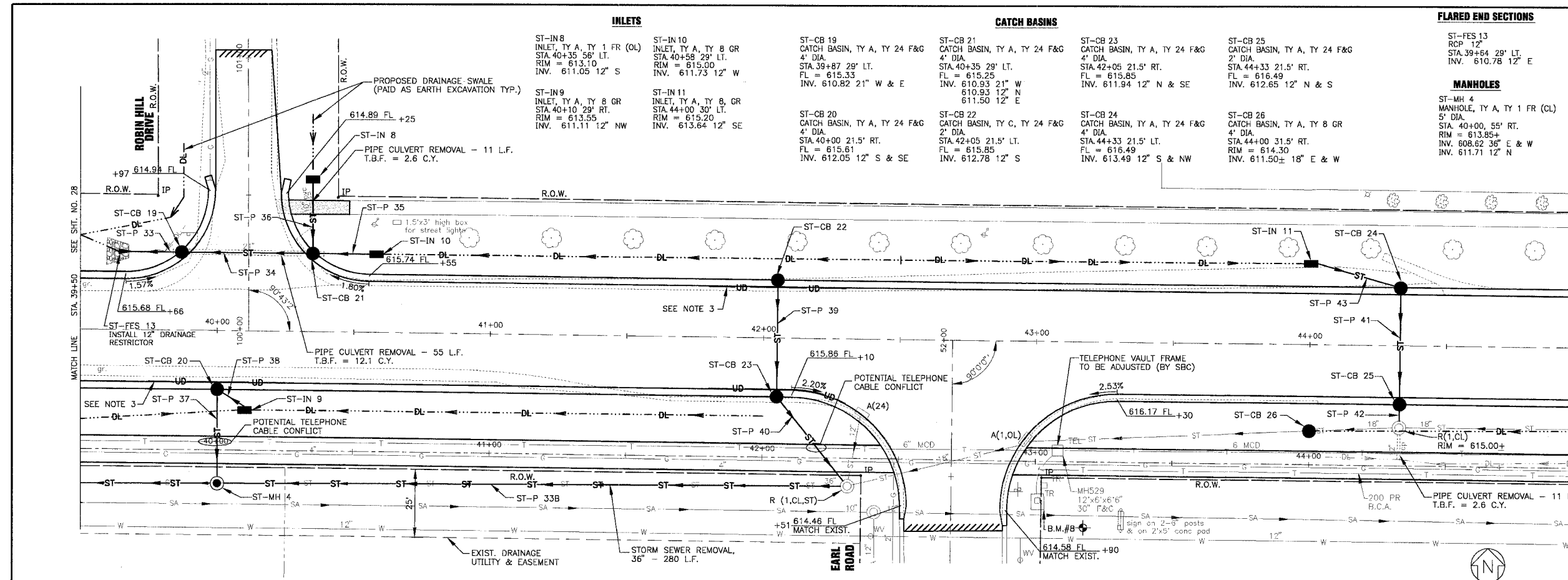
F.A.P. ROUTE NO.	SECTION	COUNTY	TOTAL SHEETS	SHEET NO.
0607	01-00014-00-PP	WILL	85	29
STA.	TO STA.	ILLINOIS	FED AID PROJECT	
			CMF-0607 (070)	

CONTRACT NO. 83786

STORM SEWER PIPES

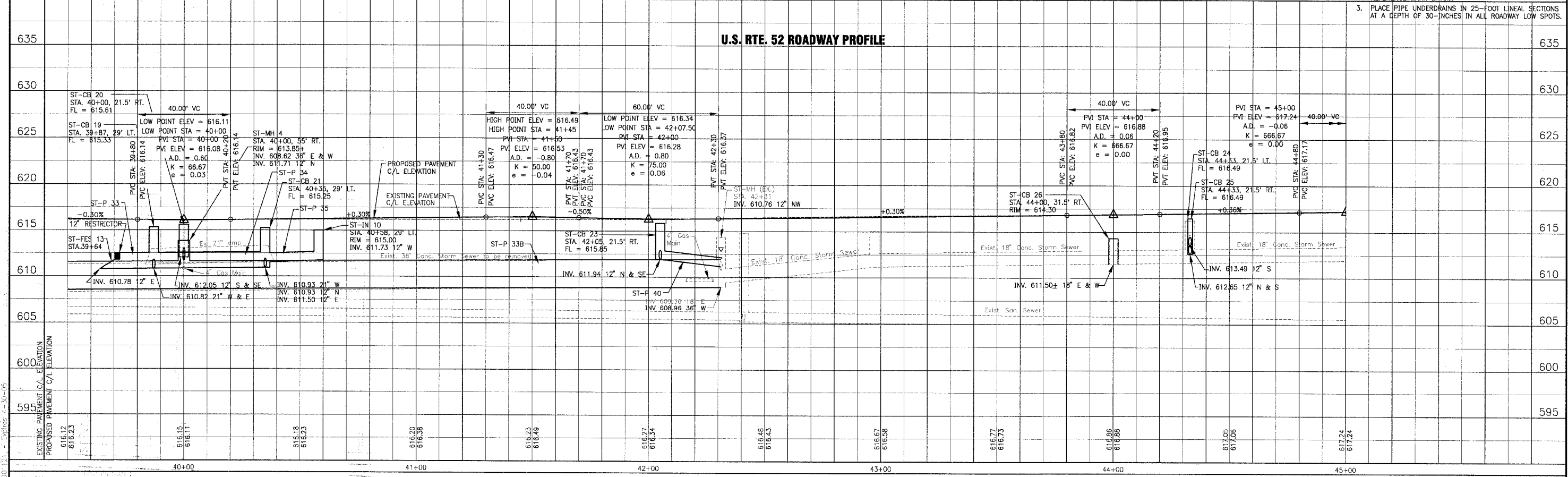
- ST-P 33
17 L.F. OF 21" STRG. CL A, TY 1 @ 0.21% (W/B' F.E.S.)
T.B.F. = 3.7 C.Y.
- ST-P 33B
230 L.F. OF 36" STRG. CL A, TY 2 @ 0.15%
T.B.F. = 187.70 C.Y.
- ST-P 34
48 L.F. OF 21" STRG. CL A, TY 1 @ 0.21%
T.B.F. = 19.8 C.Y.
- ST-P 35
23 L.F. OF 12" STRG. CL A, TY 1 @ 1.00%
T.B.F. = 5.4 C.Y.
- ST-P 36
27 L.F. OF 12" STRG. CL A, TY 1 @ 1.00%
T.B.F. = 6.9 C.Y.
- ST-P 37
34 L.F. OF 12" STRG. CL A, TY 1 @ 1.00%
T.B.F. = 32.2 C.Y.
- ST-P 38
13 L.F. OF 12" STRG. CL A, TY 1 @ 0.45%
T.B.F. = 3.1 C.Y.
- ST-P 39
43 L.F. OF 12" STRG. CL A, TY 1 @ 2.00%
T.B.F. = 12.6 C.Y.
- ST-P 40
41 L.F. OF 12" STRG. CL A, TY 1 @ 2.00%
T.B.F. = 10.3 C.Y.
- ST-P 41
42 L.F. OF 12" STRG. CL A, TY 1 @ 2.00%
T.B.F. = 11.1 C.Y.
- ST-P 42
8 L.F. OF 12" STRG. CL A, TY 2 @ 8.00%
T.B.F. = 2.4 C.Y.
- ST-P 43
33 L.F. OF 12" STRG. CL A, TY 2 @ 0.45%
T.B.F. = 7.8 C.Y.

- NOTE:
- SEE SHT. NO. 19 FOR GEOMETRIC INFORMATION.
 - DATUM CORRELATION: BAXTER & WOODMAN, INC. SURVEY DATA SHOULD BE ADJUSTED BY -0.12' TO MATCH FEMA REFERENCE MARK DATUM.
 - PLACE PIPE UNDERDRAINS IN 25-FOOT LINEAL SECTIONS AT A DEPTH OF 30-INCHES IN ALL ROADWAY LOW SPOTS.



U.S. RTE. 52

U.S. RTE. 52 ROADWAY PROFILE



CONSULTANTS	REV. NO.	DATE	DESCRIPTION
	1	12-21-04	PER I.D.O.T. REVIEW

* REFER TO EQUIPMENT MANUFACTURER'S SHOP DRAWINGS

BAXTER & WOODMAN
Consulting Engineers

Baxter & Woodman
Crystal Lake, Illinois 815.459.1280
Burlington, Wisconsin 262.763.7834
Mokena, Illinois 708.478.2090
DeKalb, Illinois 815.787.3111
Grayslake, Illinois 847.223.5088
Rockford, Illinois 815.489.1551

VILLAGE OF SHOREWOOD, ILLINOIS
U.S. ROUTE 52 IMPROVEMENTS

US. ROUTE 52
STA. 39+50 TO STA. 45+00
DRAINAGE & UTILITY PLAN

DESIGNED BY LDH	SCALE VERT: 1"=5'
DRAWN BY UKB	HORIZ: 1"=20'
CHECKED BY LDH	PROJECT NO. 010665
DATE 10-05-04	SHEET NO. 29 OF 85

I:\SHRD\010665\DWG\10665-PRF.dwg
 Plotted: 1:04:05 @ 10:58am By: 231Luk
 Copyright © 2004, by Baxter & Woodman, Inc.
 State of Illinois Professional Design Firm
 License No. 02-001213-3 Expires 4-30-05