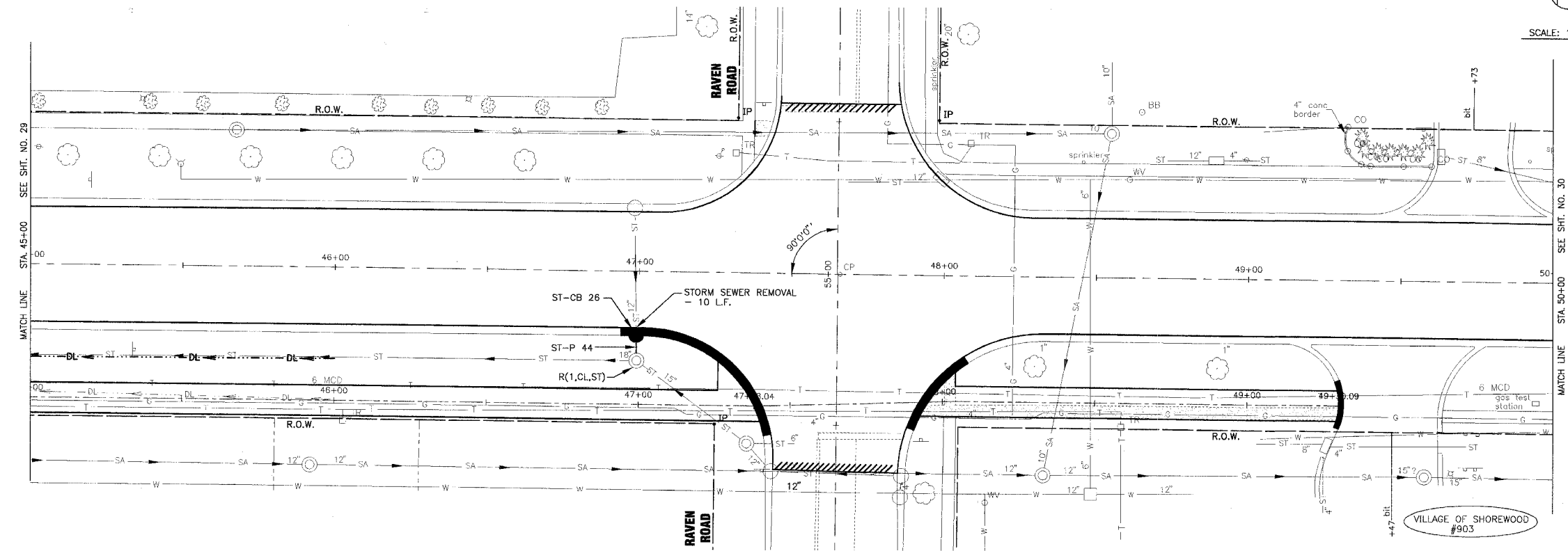


F.A.P. ROUTE NO.	SECTION	COUNTY	TOTAL SHEETS	SHEET NO.
0607	01-00014-00-FP	WILL	85	30
STA.	TO STA.	ILLINOIS	FED. AID PROJECT	
			CMF-0607 (070)	
CONTRACT NO. 83786				



SCALE: 1" = 20'

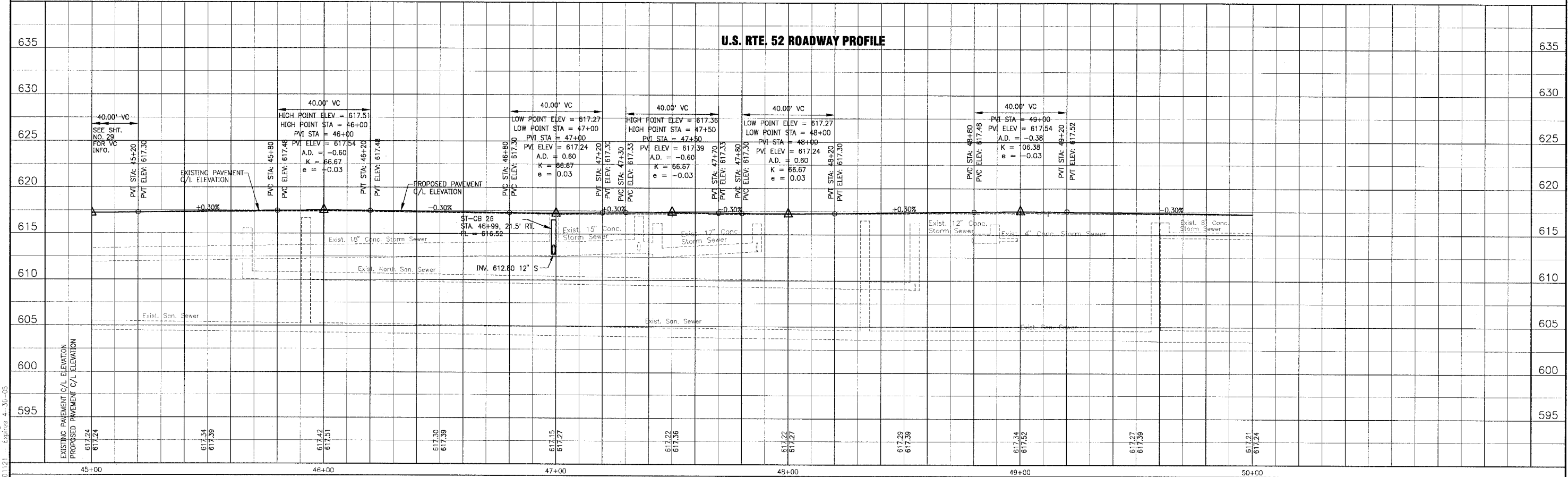


STORM SEWER PIPES
 ST-P 44
 9 LF OF 12" STRG. CL. A, TY 2 @ 1.26%
 T.B.F. = 2.9 C.Y.

CATCH BASINS
 ST-CB 26
 CATCH BASIN, TY C, TY TY 24 F&G
 2' DIA.
 STA. 46+99 21.5' RT.
 FL = 616.52
 INV. 612.80 12" S

- NOTE:
- SEE SHT. NO. 20 FOR GEOMETRIC INFORMATION.
 - DATUM CORRELATION: BAXTER & WOODMAN, INC. SURVEY DATA SHOULD BE ADJUSTED BY -0.12' TO MATCH FEMA REFERENCE MARK DATUM.

U.S. RTE. 52



I:\SHRWD\010665\DWGS\10665-PRI.dwg
 Plotted: 12-15-04 @ 10:36am By: 231ukb
 Copyright © 2004, by Baxter & Woodman, Inc.
 State of Illinois - Professional Design Firm
 License No. = 188-001121 - Expires 4-30-05

CONSULTANTS	REV. NO.	DATE	DESCRIPTION
	1	12-21-04	PER I.D.O.T. REVIEW

DRAWING FILE: _____ PLOTTED BY: _____

BAXTER & WOODMAN
 Consulting Engineers

Baxter & Woodman
 Crystal Lake, Illinois 815.459.1260
 Burlington, Wisconsin 262.763.7834
 Mokena, Illinois 708.478.2090
 DeKalb, Illinois 815.787.3111
 Graylake, Illinois 847.233.5088
 Rockford, Illinois 815.488.1551

VILLAGE OF SHOREWOOD, ILLINOIS
U.S. ROUTE 52 IMPROVEMENTS

US. ROUTE 52
STA. 45+00 TO STA. 50+00
DRAINAGE & UTILITY PLAN

DESIGNED BY LDH	SCALE VERT: 1"=5'
DRAWN BY UKB	HORIZ: 1"=20'
CHECKED BY LDH	PROJECT NO. 010665
DATE 10-05-04	SHEET NO. 30 OF 85